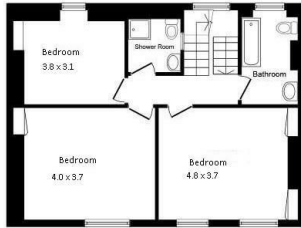
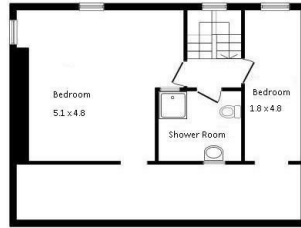


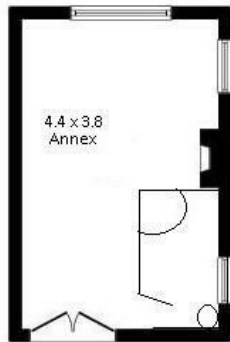
Ground Floor



First Floor



Second Floor



Penzance

£775,000



The accuracy of these particulars is not guaranteed nor do they form part of any contract. Applicants should verify details by personal examination and enquiry.

PRH is a trading name of PRH Lettings Limited. Registered office: 15 Alverton Street, Penzance, Cornwall, TR18 2QP. Registered in England No. 6667569



4 The Green Market, Penzance, Cornwall, TR18 2SH T: 01736 363816 E:mail@prhpenzance.co.uk

28 Chapel Street
Penzance
TR18 4AP

£775,000

KEY FEATURES

- Freehold Grade II Listed Townhouse
- 2 Reception Rooms, 5 Bedrooms & 3 Bathrooms
- Walled Garden
- Auxillary Annex
- Sea Views
- EPC D 65 - 82
- Stunning home with many charming features

DIRECTIONS

From our office turn right onto The Greenmarket, then right into Market Square which leads onto Chapel Street. Number 28 is situated at the far end prior to the church.



Welcome to Chapel Street, Penzance - a truly remarkable location steeped in history and charm. This Grade II listed townhouse is a gem nestled in one of the most historic parts of Penzance, boasting stunning architecture that will take your breath away.

This period townhouse oozes charm and character yet offers modern comfort. With two reception rooms, 5 bedrooms, three bathrooms and a garden room. There is ample space in this versatile home. Other features include an enclosed walled garden and stunning sea views. Additionally, the auxillary annex at the bottom of the garden provides endless possibilities - whether it's a guest suite, a home office, or a cozy retreat.

*Services: Mains Electric, Gas, water & Drainage *** Heating: Gas Central Heating *** Tenure: Freehold *** Cornwall Council Tax Band: F*

The ancient market town of Penzance offers a myriad of independent shops, eateries and schools. It is famous for its promenade, geo thermal lido and beautiful gardens. Penzance is the terminus for the GWR train line from Paddington which offers a regular direct service.

