



Shaftesbury Road, Epping

Price Range £585,000 to £600,000



MILLERS
ESTATE AGENTS

* PRICE RANGE: £585,000 - £600,000 * SEMI
DETACHED * BACKING ONTO OPEN
COUNTRYSIDE * SHORT WALK TO HIGH
STREET * CHAIN FREE *

Millers is pleased to present a charming three-bedroom semi-detached home, complete with off-street parking and a long garden that backs onto open countryside. This property is conveniently located on the outskirts of Epping Town, within walking distance of the High Street, the Central Line tube station, and the beautiful open countryside of Swaines Green.

The accommodation includes an entrance hallway that leads to a front living room featuring a cozy fireplace and wooden flooring. This opens into a beautifully presented kitchen breakfast room, which provides ample space for a dining table and chairs. An inner hallway connects to the side and rear gardens, as well as a ground-floor three-piece bathroom fitted with white sanitary ware. The first floor consists of three bedrooms, including a master bedroom with an en-suite WC. The two additional bedrooms can be accessed from a central landing that also leads to the loft space.

Externally, the front of the property boasts a lovely garden that allows for off-street parking, with a side gate leading to the rear garden. The rear garden features a raised patio area, a secure motorbike store, a wooden shed, and a spacious lawn measuring approximately 130 feet, offering stunning views over the open countryside.

Epping Town is positioned at the end of the central line on the underground, serving London. Located on the edge of our famous forest for recreation, bike riding and horse riding. Epping has a busy high street with a range of shops, cafes, bars, and restaurants. Transport connections are available for the M11 at Hastingwood and M25 at Waltham Abbey.





GROUND FLOOR

Living Room

13'7" x 12'6" (4.14m x 3.81m)

Breakfast Kitchen / Diner

9'8" x 17'8" (2.95m x 5.38m)

Lobby

Bathroom

87" x 5'10" (26.52m x 1.78m)

FIRST FLOOR

Bedroom One

11'8" x 13'11" (3.56m x 4.25m)

Separate Toilet

3'11" x 3'4" (1.19m x 1.02m)

Bedroom Two

9'10" x 8'11" (3.00m x 2.73m)

Bedroom Three

6'8" x 8'0" (2.04m x 2.44m)

EXTERNAL AREA

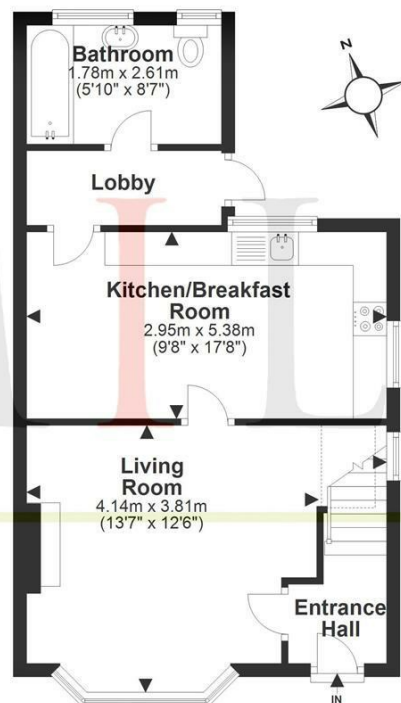
Rear Garden

130' x 20' (39.62m x 6.10m)



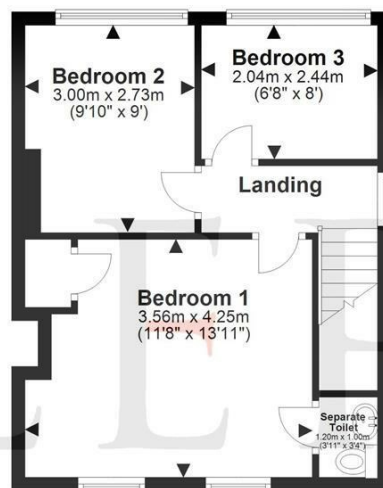
Ground Floor

Approx. 44.1 sq. metres (474.5 sq. feet)



First Floor

Approx. 35.1 sq. metres (377.6 sq. feet)

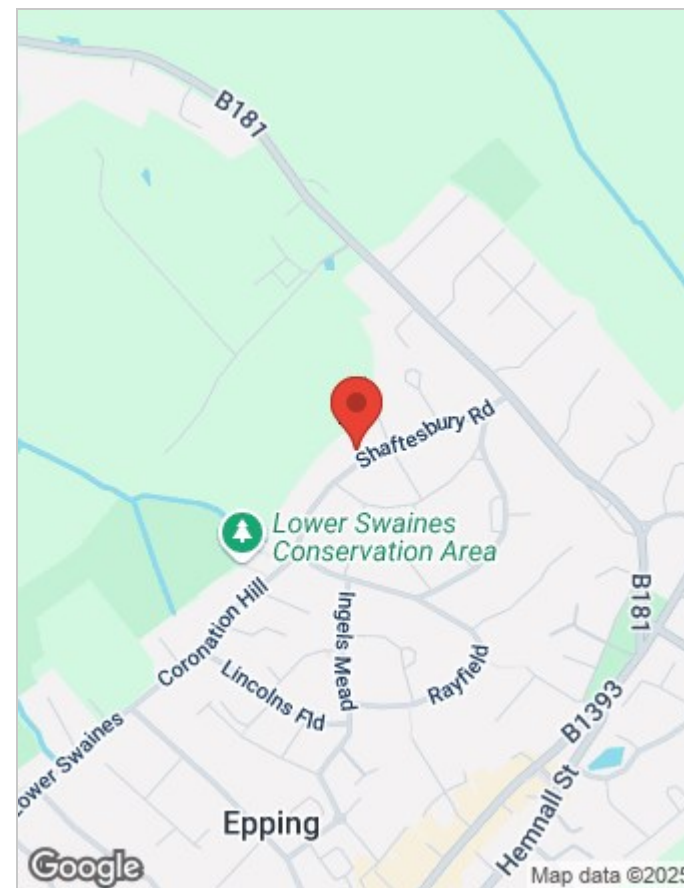


Floor Plan Key

- Restricted height
Measured from 1.5m height
- Room indication of where
measurements are taken from
- Property main entry
- Chimney breast & Fireplace
- Sky light/elevated window

Total area: approx. 79.2 sq. metres (852.1 sq. feet)

Our floor plans are intended to give a general indication of the proposed floor layout only and may vary in the finished building and overall footage



Viewing

Please contact our Millers Office on 01992 560555 if you wish to arrange a viewing appointment for this property or require further information.

These particulars, whilst believed to be accurate are set out as a general outline only for guidance and do not constitute any part of an offer or contract. Intending purchasers should not rely on them as statements of representation of fact, but must satisfy themselves by inspection or otherwise as to their accuracy. No person in this firms employment has the authority to make or give any representation or warranty in respect of the property.

Energy Efficiency Rating			Environmental Impact (CO ₂) Rating		
	Current	Potential		Current	Potential
Very energy efficient - lower running costs			Very environmentally friendly - lower CO ₂ emissions		
(92 plus) A		88	(92 plus) A		
(81-91) B			(81-91) B		
(69-80) C			(69-80) C		
(55-68) D	64		(55-68) D		
(39-54) E			(39-54) E		
(21-38) F			(21-38) F		
(1-20) G			(1-20) G		
Not energy efficient - higher running costs			Not environmentally friendly - higher CO ₂ emissions		
England & Wales			England & Wales		
EU Directive 2002/91/EC			EU Directive 2002/91/EC		

229 High Street, Epping, Essex, CM16 4BP

Tel: 01992 560555 | Email: sales@millersepping.co.uk

www.millersepping.co.uk