



High Road, North Weald

Price Range £825,000 to £850,000

 4  2  3  C

MILLERS
ESTATE AGENTS

* PRICE RANGE: £825,000 to £850,000 *
VERSATILE FAMILY HOME * FOUR BEDROOMS *
THREE RECEPTION ROOMS * PARKING & GARAGE *
DETACHED HOME OFFICE * STUNNING PROPERTY *

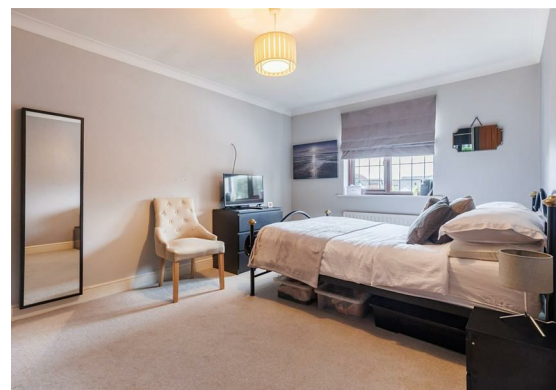
Welcome to this stunning detached family house, discreetly located on the High Road in the charming village of North Weald. This beautifully presented property boasts a contemporary and stylish interior, perfect for those looking for a modern living space, perfectly finished.

Stepping inside the porch, you are greeted by a spacious entrance hall & three spacious reception rooms, including a living room with a feature fireplace, a cosy family TV room and a conservatory, offering plenty of space for entertaining guests or simply relaxing with the family. The versatile accommodation offers four bedrooms and two bathrooms, providing ample room for everyone to enjoy their own space & privacy.

One of the highlights of this property is the large private driveway with parking for up to five vehicles, ensuring you & your guests will never have to worry about finding parking. Additionally, there is an integral garage for extra storage & convenience. For those in need of a separate workspace or a creative outlet, the detached outbuilding / studio provides the perfect solution. Whether you're an artist, writer, or simply need a quiet space to work from home, this additional building offers endless possibilities.

High Road, North Weald is situated close to arable farmland, St Andrews Primary School & open fields at Weald Common. The property is a short walk to the High Street offering a range of shops, including "COOP" store, cafes, restaurant & public houses. Transport links are provided along the A414 allowing access to Chelmsford & the M11 at Hastingwood. Epping is a short drive offering a connection to London via the Central Line & has a busy High Street. North Weald schooling is provided at St. Andrews Primary School, Epping St Johns Comprehensive School in Epping and the Ongar Academy in Ongar.





GROUND FLOOR

Porch

8'8" x 4'3" (2.64m x 1.30m)

Cloakroom WC

6'2 x 3'5" (1.88m x 1.04m)

Living Room

19'11" x 14'6" (6.07m x 4.42m)

Conservatory

11'11" x 13'4" (3.63m x 4.06m)

Kitchen Dining Room

25'1" x 12'1" (7.64m x 3.68m)

Family (TV) Room

14'1" x 8'7" (4.29m x 2.62m)

FIRST FLOOR

Bedroom One

En-suite Shower Room

25'1" x 12'1" (7.65m x 3.68m)

Bedroom Two

11'0" x 12'7" (3.36m x 3.84m)

Bedroom Three

12'10" x 9'11" (3.92m x 3.03m)

Bedroom Four

11'8" x 8' (3.56m x 2.44m)

Bathroom

8'10" x 6'4" (2.69m x 1.93m)

EXTERNAL AREA

Garage

17'6" 8'5" (5.33m 2.57m)

Office

8'0" x 17'1" (2.44m x 5.21m)

Rear Garden

60' x 34'8" (18.29m x 10.57m)



