



Hill Hall, Theydon Mount, Epping

Price Range £875,000



MILLERS
ESTATE AGENTS

* PRICE RANGE: £875,000 to £900,000 *
IMMACULATE APARTMENT * FORMS PART
OF AN IMPRESSIVE ELIZABETHAN MANSION
* 20 ACRES OF COMMUNAL GARDENS &
GROUNDS * 2,107.00 SQ FT
ACCOMMODATION * BEAUTIFULLY FINISHED
PROPERTY *

Grade I Listed Elizabethan mansion set in approximately twenty acres of park-like grounds. Hill Hall has been sympathetically restored enhancing the mansion building and features some of the earliest external Renaissance architectural detail in the country. The building was developed and renovated in 2001 and incorporates the charm and character of the original features whilst offering spacious accommodation to these exclusive apartments. The property is approached by a long formal gravel driveway leading into an impressive entrance featuring wrought iron gates giving access to ample allocated parking.

This fabulous first floor split level apartment has been refurbished throughout by the current owners to a very high standard and boasts wonderful features to include floor to ceiling sash windows, feature fireplaces, high ceilings and amazing views over the extensive grounds. The spectacular apartment is situated over two floors with accommodation comprising entrance hallway, spacious lounge, dining room (bedroom 3), ground floor shower room, bespoke fully integrated kitchen/breakfast room with central island and granite work surfaces. On the upper floor there is a utility area, panelled master bedroom with walk-in dressing room and contemporary en-suite bathroom, a further double bedroom and modern shower room. The apartment has the benefit of a lift and security video entry phone system and a single garage and is being offered with vacant possession.





GROUND FLOOR

Living Room

19'10" x 22'1" (6.05m x 6.72m)

Kitchen Breakfast Room

14'10" x 15'1" (4.51m x 4.59m)

Shower Room

6'5" x 8' (1.96m x 2.44m)



FIRST FLOOR

Bed Three / Dining Room

15'3" x 14'8" (4.64m x 4.48m)

Utility Area

7'9" x 3'3" (2.36m x 0.98m)

Bedroom One

10'3" x 18'4" (3.13m x 5.60m)

Walk in Wardrobe

5'5" x 8'2" (1.65m x 2.49m)

En-suite Bathroom

8' x 13'8" (2.44m x 4.17m)

Shower Room

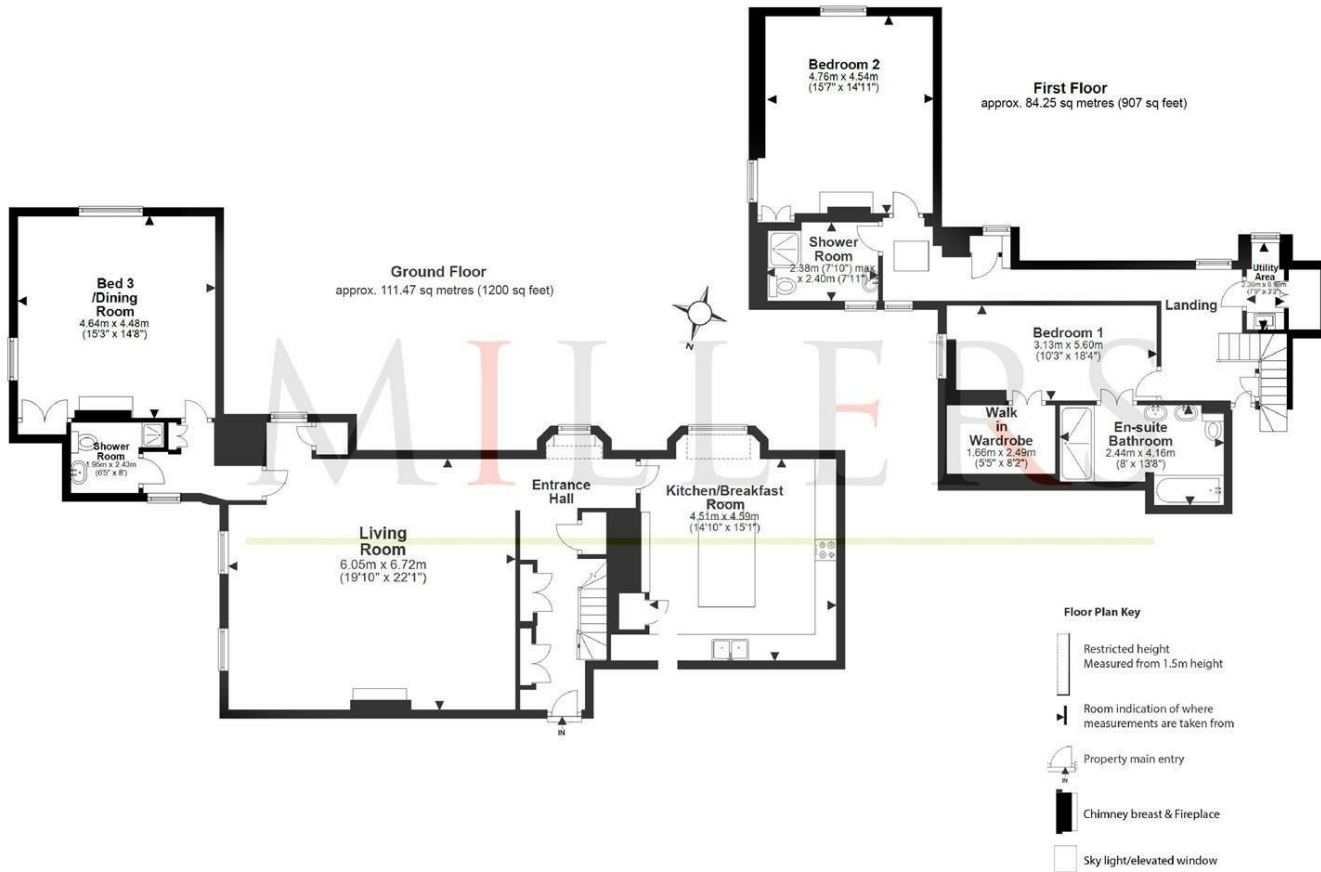
7'10" x 7'11" (2.39m x 2.41m)

Bedroom Two

15'7" x 14'11" (4.76m x 4.54m)

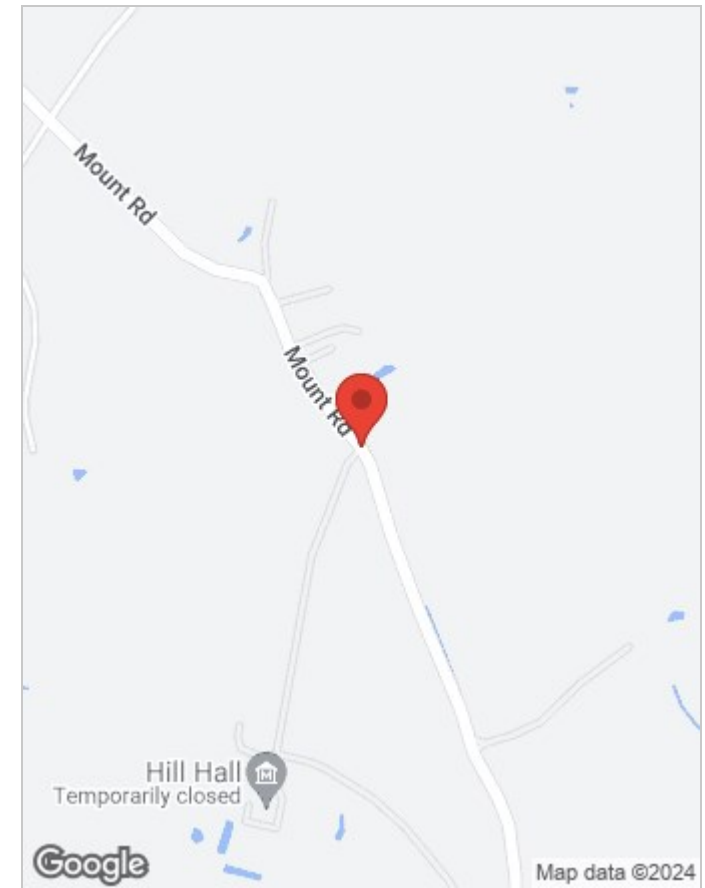
EXTERNAL AREA





Total area : approx. 195.74 sq metres (2107 sq feet)

Our floor plans are intended to give a general indication of the proposed floor layout only and may vary in the finished building and overall footage. Plan produced using PlanUp.



Viewing

Please contact our Millers Office on 01992 560555 if you wish to arrange a viewing appointment for this property or require further information.

These particulars, whilst believed to be accurate are set out as a general outline only for guidance and do not constitute any part of an offer or contract. Intending purchasers should not rely on them as statements of representation of fact, but must satisfy themselves by inspection or otherwise as to their accuracy. No person in this firm's employment has the authority to make or give any representation or warranty in respect of the property.