



**78 Sunnymill Drive**

CW11 4NB

**£485,000**



5



2



2



C



STEPHENSON BROWNE



Welcome to Sunnymill Drive, Sandbach - a delightful detached house that offers the perfect blend of space, comfort, and convenience. This charming property boasts two reception rooms, ideal for entertaining guests or simply relaxing with your family. With five generously sized bedrooms, there is ample space for everyone to enjoy their own private sanctuary.

The property features two bathrooms, ensuring that the morning rush is a thing of the past. The separate dining room and lounge provide versatile spaces for both formal dinners and cosy nights in.

Situated in a fantastic location close to town, you'll have easy access to all the amenities you could need, from shops to restaurants. The great size garden is perfect for enjoying the outdoors, whether it's for gardening, hosting summer barbecues, or simply soaking up the sun.

To top it all off, this property comes with a detached double garage, providing secure parking for your vehicles and additional storage space. Don't miss out on the opportunity to make this house your home - book a viewing today and start envisioning the endless possibilities that this property has to offer.





**Accommodation**

**Entrance Hallway**

UPVC double glazed door with frosted insert, UVPC double glazed windows to side elevation, laminate wood effect flooring, two ceiling light points, smoke alarm, under stairs storage cupboard, radiator, stairs to the first floor.

**Cloakroom**

4'1" x 4'10"  
Low level WC, wall hung corner wash basin, white ladder style radiator, vinyl flooring, ceiling light point, UPVC double glazed frosted window to front elevation.

**Kitchen**

20'2" x 10'10"  
Good range of cream shaker wall and base units (solid wood in-frame units) with granite work surface over, inset Belfast sink with mixer tap over, integrated dishwasher, space and plumbing for washing machine and tumble dryer, kitchen island with breakfast bar, seven ring Smeg range cooker with Smeg extractor fan over, fridge and separate freezer, tiled flooring, spotlighting, ceiling light point, UPVC double glazed window to the front elevation and doors to rear elevation.

**Garden Room**

11'10" x 16'8"  
Amtico flooring, two UPVC double glazed windows to the front elevation, UPVC double glazed doors and windows to side elevation two large skylights, ceiling light points.

**Lounge**

17'7" x 13'4"  
Ceiling light point, UPVC double glazed box bay window to rear elevation, wood effect laminate flooring continued, tv point, gas stove capable of conversion to burn solid fuel, with class one flue. Fire with marble hearth and marble surround, two radiators.

**FIRST FLOOR**

**Landing**

Ceiling light point, smoke alarm, doors to all rooms, UPVC double glazed window to front elevation, stairs to first floor, storage cupboard with hanging space,

**Bedroom One**

12'5" x 12'6"  
Wood effect laminate flooring, good range of fitted wardrobes, ceiling light point, radiator, UPVC double glazed windows to the rear elevation.

**En Suite**

7'10" x 7'6"  
Low level WC inset into vanity storage, wash hand basin inset into vanity storage below, double walk in shower enclosure with mixer shower over, spotlighting, ceiling light point, extractor fan, UPVC double glazed frosted window to front elevation, partly tiled walls, chrome ladder style radiator, tile effect vinyl flooring.

**Bedroom Three**

9'0" x 10'5"  
UPVC double glazed window to the rear elevation, radiator, ceiling light point, wood effect laminate flooring.

**Bedroom Four**

10'9" x 8'6"  
UPVC double glazed window to front elevation, radiator, ceiling light point, storage cupboard.

**Bathroom**

Vinyl flooring, UPVC double glazed frosted window to rear elevation, ceiling light point, low level WC, pedestal wash hand basin, walk in shower.

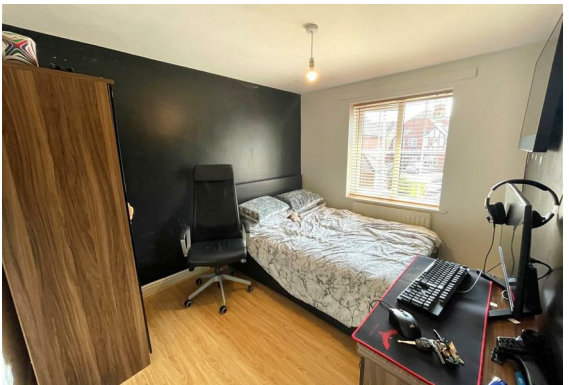
**SECOND FLOOR**

**Landing**

Ceiling light point, smoke alarm, airing cupboard with hot water tank, storage cupboard.

**Bedroom Two**

15'11" x 10'4" to the maximum  
Ceiling light point, UPVC double glazed window to the front elevation ,fitted wardrobes, eaves storage, radiator, wood effect laminate flooring.



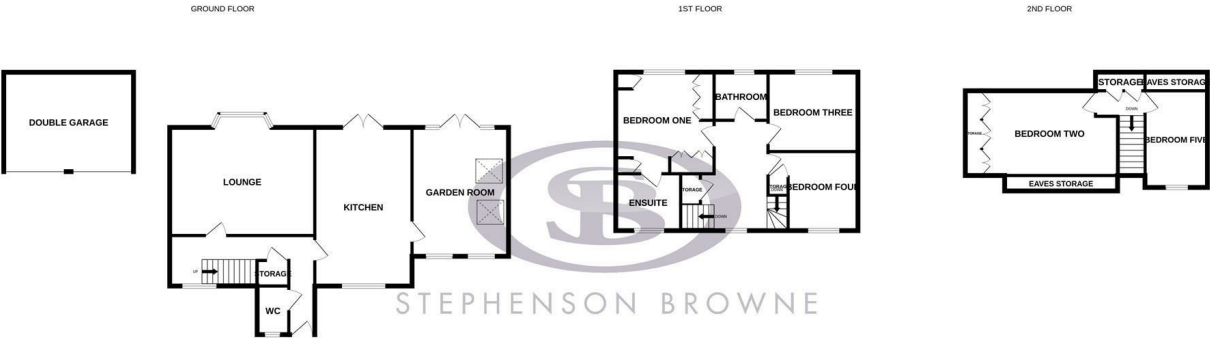


- DETACHED DOUBLE GARAGE
- FITTED WARDROBES
- STUNNING KITCHEN
- MODERN DECOR
- WALKING DISTANCE TO SANDBACH TOWN CENTRE
- FIVE BEDROOMS
- LARGE DRIVEWAY & GARDEN
- GARDEN ROOM
- NO ONWARD CHAIN
- CALL NOW TO ARRANGE A VIEWING



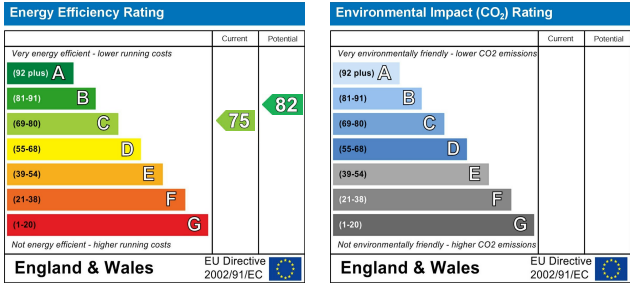


Floor Plan



Whilst every attempt has been made to ensure the accuracy of the floorplan contained here, measurements of doors, windows, rooms and any other items are approximate and no responsibility is taken for any error, omission or mis-statement. This plan is for illustrative purposes only and should be used as such by any prospective purchaser. The services, systems and appliances shown have not been tested and no guarantee as to their operability or efficiency can be given.  
Made with Metropix ©2024

Area Map



Viewing

Please contact our Sandbach Office on 01270 763200 if you would like to arrange a viewing appointment or require any further information.

NOTICE: Stephenson Browne for themselves and for the vendors or lessors of this property whose agents they are give note that: (1) the particulars are set out as a general guideline only for the guidance of intending purchasers or lessees. and do not constitute, nor constitute part of, an offer or contract; (2) all descriptions, dimensions, references to condition and necessary permissions for use and occupation, and other details are given in good faith and are believed to be correct but any intending purchasers or tenants should not rely on them as statements or representations of fact but must satisfy themselves by inspection or otherwise as to be the correctness of each theme; (3) no person in the employment of Stephenson Browne has any authority to make representation or warranty in relation to this property; (4) fixtures and fittings are subject to a formal list supplied by the vendors solicitor. Referring to: Move with Us Ltd Average fee: £123.64