



12 Mellors Field Close

CW11 1TT

£420,000



4



3



2



B



STEPHENSON BROWNE

A beautifully presented, substantially proportioned and enviably positioned detached four bedroom family home in the heart of the Sandbach. Occupying a generous corner plot and providing ample room for all of the family, this is an excellent opportunity to acquire the perfect long term home.

Comprising of a separate entrance hallway providing access to all of the principal rooms and stairs to the first floor, a useful downstairs cloakroom, bay fronted lounge, secondary reception room perfect for use as a playroom, home office or snug, open plan dining kitchen fitted with a comprehensive range of modern wall and base units with work surfaces over and integrated appliances. Separate utility room to the side aspect.

To the first floor, there are four well sized bedrooms, all of which host integrated wardrobe spaces for added practicality. The principal bedroom also benefits from a three piece en-suite shower room, further to a three piece family bathroom which serves the home.

To the outside, the home is fronted by a quaint garden area, with off road driveway parking to the side and a detached single garage. Gated access to the private rear garden, fully enclosed by fenced borders and hosting two separate patio areas.

NO ONWARDS CHAIN.



Entrance Hallway

Tiled flooring, spotlighting, radiator, smoke alarm, stairs rising to the first floor with understairs storage cupboard below, UPVC window the and composite door to the front elevation.

Lounge

16'7" x 11'10"

Two ceiling light points, decorative electric fire unit, bay window to the front elevation, two radiators, TV point,

Downstairs Cloakroom

5'8" x 3'9"

Low Level WC, pedestal hand wash basin with mixer tap, UPVC obscure glass window to the side elevation, radiator, ceiling light point, extractor fan, tiled flooring with part tiled walls.

Study / Play Room

10'0" x 9'3"

UPVC double glazed window to side elevation, radiator, ceiling light point and TV point.

Dining Kitchen

20'1" x 9'4"

Comprehensive range of white front wall and base units with work surfaces over, inset 1.5 sink with mixer tap and drainer, integral dishwasher, integral fridge freezer, integrated low level oven, four ring gas cooking hob with extractor hood over, tiled flooring, radiator, ceiling light point and spotlighting, French doors to rear elevation and UPVC double glazed window to side elevation.

Utility Room

9'5" x 5'3"

Wall and base units continued, inset stainless steel sink with mixer tap and drainer, integrated washing machine, UPVC double glazed door leading out to the garden, spotlighting, extractor fan, radiator, tiled flooring.

Landing

UPVC double glazed window to front elevation, spotlighting, extractor fan, radiator. Storage cupboard.

Bedroom One

12'1" x 11'7"

UPVC double glazed window to front elevation, radiator, ceiling light point, TV point and fitted wardrobes.

Bedroom One En-Suite

7'1" x 4'10"

Low level WC, pedestal hand wash basin with mixer tap, fully tiled shower enclosure with mixer shower head, chrome ladder style radiator, obscure glass window to side elevation, spotlighting, tiled flooring, extractor fan.

Bedroom Two

12'4" x 10'2" max

UPVC double glazed window to rear elevation, radiator, ceiling light point, TV point, fitted wardrobes.

Bedroom Three

10'2" x 8'9"

UPVC double glazed window to side elevation, radiator, ceiling light point, fitted wardrobes.

Bedroom Four

8'10" x 6'6"

UPVC double glazed window to side elevation, radiator, ceiling light point, fitted wardrobes.

Family Bathroom

7'4" x 7'2"

Low level WC, pedestal hand wash basin with mixer tap, panel bath with mixer shower over and glass screen, spotlighting, fully tiled floors and walls, shaving point, chrome ladder style radiator, UPVC double glazed obscure glass window to rear elevation.

Front

Shaped lawn area, paved pathway to front door and tarmac driveway.

Rear Garden

Patio Area, access to detached single garage with up and over door, further raised patio area at the rear most elevation, side access gate to driveway.

Management Charge

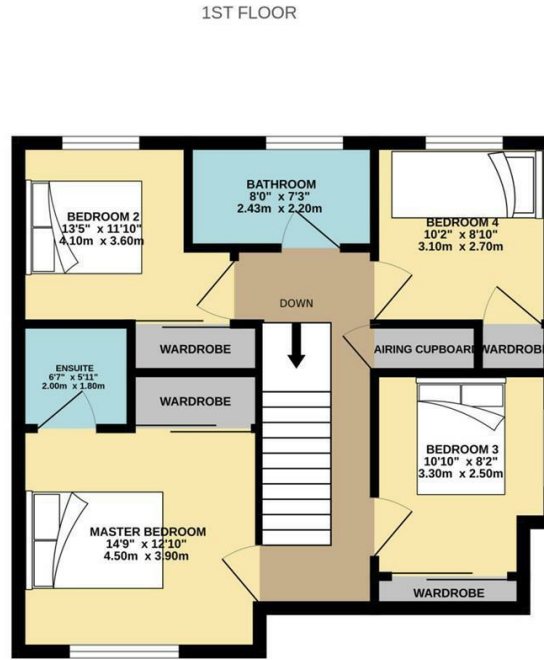
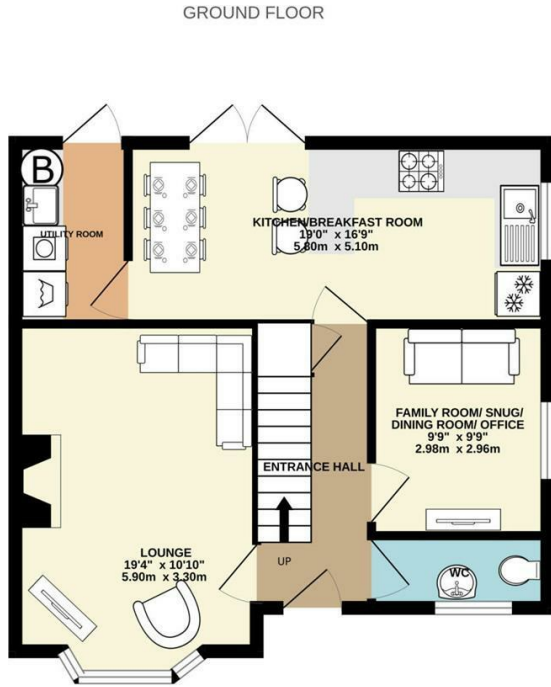
The property is Freehold, with an estate management fee of around £250 per year via RMG.



- Premium Detached Family Home For Sale with NO ONWARDS CHAIN
- Superb Presentation Throughout
- Two Reception Rooms and Four Bedrooms
- En-Suite Shower Room and Family Bathroom
- Downstairs Cloakroom and Separate Utility Room
- Modern High Specification Dining Kitchen
- Driveway Parking and Detached Garage
- Private Enclosed Garden and Patio
- Sought After Development on Doorstep of Sandbach Town
- Excellent for Commuting via M6 Motorway



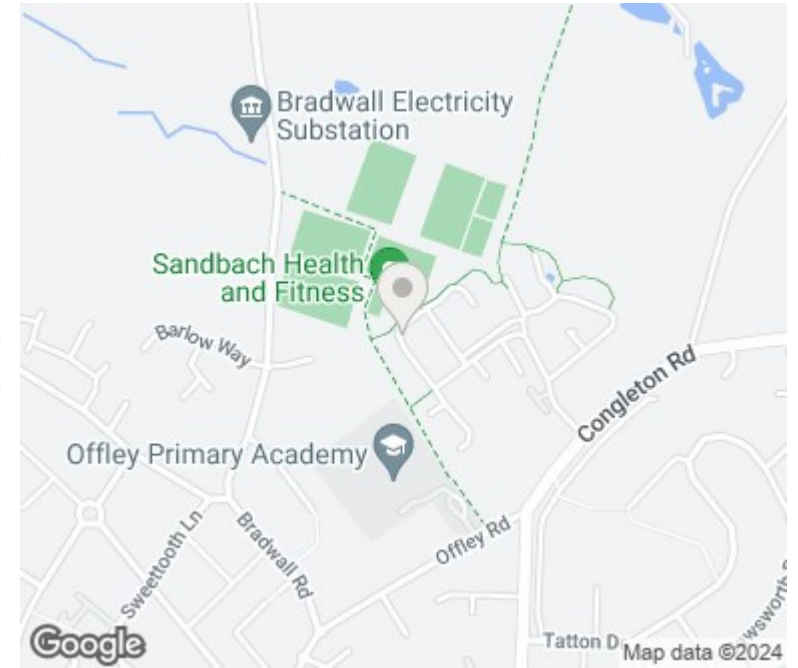
Floor Plan



TOTAL FLOOR AREA : 1346sq.ft. (125.0 sq.m.) approx.

Whilst every attempt has been made to ensure the accuracy of the floorplan contained here, measurements of doors, windows, rooms and any other items are approximate and no responsibility is taken for any error, omission or mis-statement. This plan is for illustrative purposes only and should be used as such by any prospective purchaser. The services, systems and appliances shown have not been tested and no guarantee as to their operability or efficiency can be given.
Made with Metropix ©2023

Area Map



Energy Efficiency Rating		Current	Potential
Very energy efficient - lower running costs			
(92 plus) A			93
(81-91) B		84	
(69-80) C			
(55-68) D			
(39-54) E			
(21-38) F			
(1-20) G			
Not energy efficient - higher running costs			
England & Wales		EU Directive 2002/91/EC	

Environmental Impact (CO ₂) Rating		Current	Potential
Very environmentally friendly - lower CO ₂ emissions			
(92 plus) A			
(81-91) B			
(69-80) C			
(55-68) D			
(39-54) E			
(21-38) F			
(1-20) G			
Not environmentally friendly - higher CO ₂ emissions			
England & Wales		EU Directive 2002/91/EC	

Viewing

Please contact our Sandbach office if you wish to arrange a viewing appointment or require further information.

NOTICE: Stephenson Browne for themselves and for the vendors or lessors of this property whose agents they are give note that: (1) the particulars are set out as a general guideline only for the guidance of intending purchasers or lessees. and do not constitute, nor constitute part of, an offer or contract; (2) all descriptions, dimensions, references to condition and necessary permissions for use and occupation, and other details are given in good faith and are believed to be correct but any intending purchasers or tenants should not rely on them as statements or representations of fact but must satisfy themselves by inspection or otherwise as to be the correctness of each theme; (3) no person in the employment of Stephenson Browne has any authority to make representation or warranty in relation to this property; (4) fixtures and fittings are subject to a formal list supplied by the vendors solicitor. Referring to: Move with Us Ltd Average fee: £123.64