



3 Welbeck Gardens, Woodthorpe – NG5 4NX

Guide Price £230,000

DavidJames
the estate agent



3 Welbeck Gardens

Woodthorpe, Nottingham

Tucked away in the heart of Woodthorpe, this 3-bed terraced house offers spacious interiors, an established garden and superb views! Bright lounge, open plan dining kitchen and a driveway plus garage!

Council Tax band: B

Tenure: Freehold

EPC Energy Efficiency Rating: D

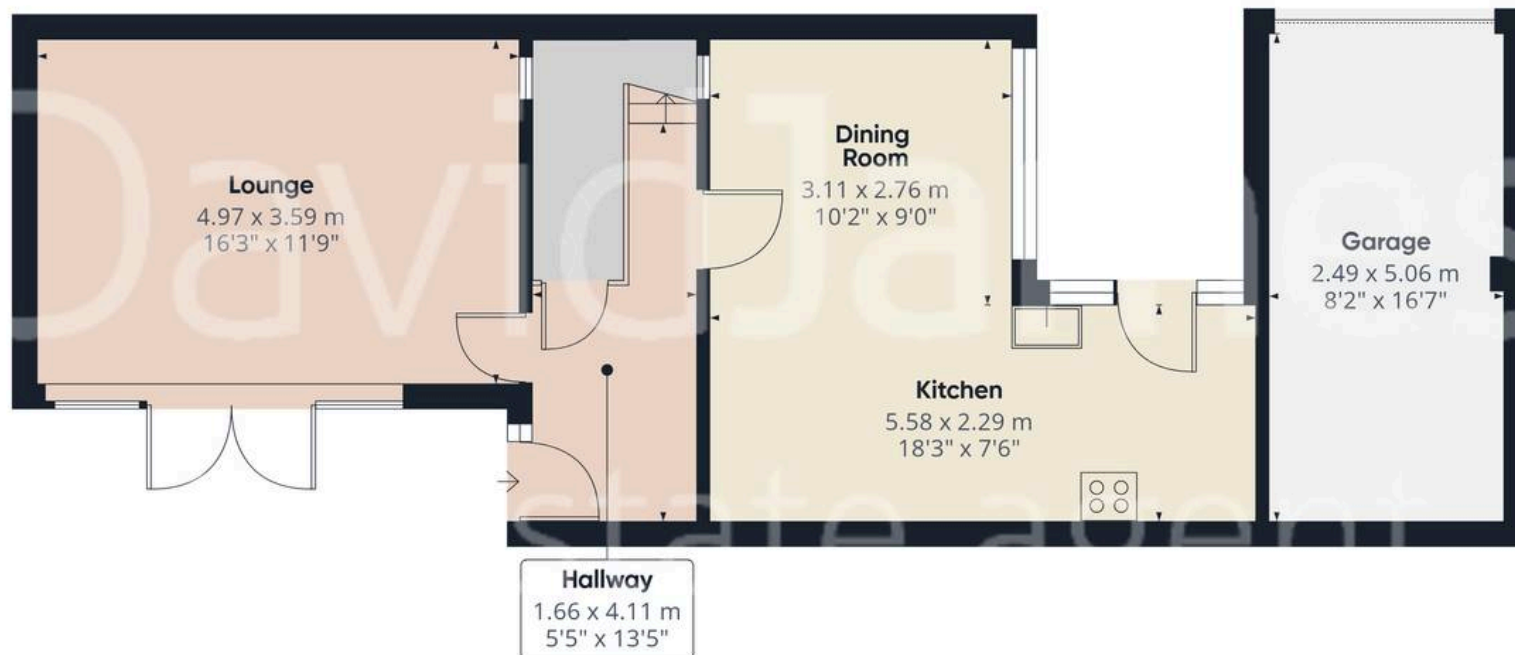
EPC Environmental Impact Rating: D

- Terraced house in the heart of Woodthorpe
- Popular location close to both Mapperley and Arnold's amenities, sought-after schools and bus services
- Good-sized lounge with French doors to the garden
- Bright and spacious open-plan dining kitchen with timber-finish units and integrated appliances
- Three well-proportioned first floor bedrooms
- Family bathroom with electric shower and separate WC
- Garden with lawn and patio ideal for entertaining and relaxing plus additional garden space across communal path with shed and lawn
- Elevated position offering far-reaching views across north-east Nottingham
- Driveway providing convenient off-street parking
- Useful garage with power and lighting

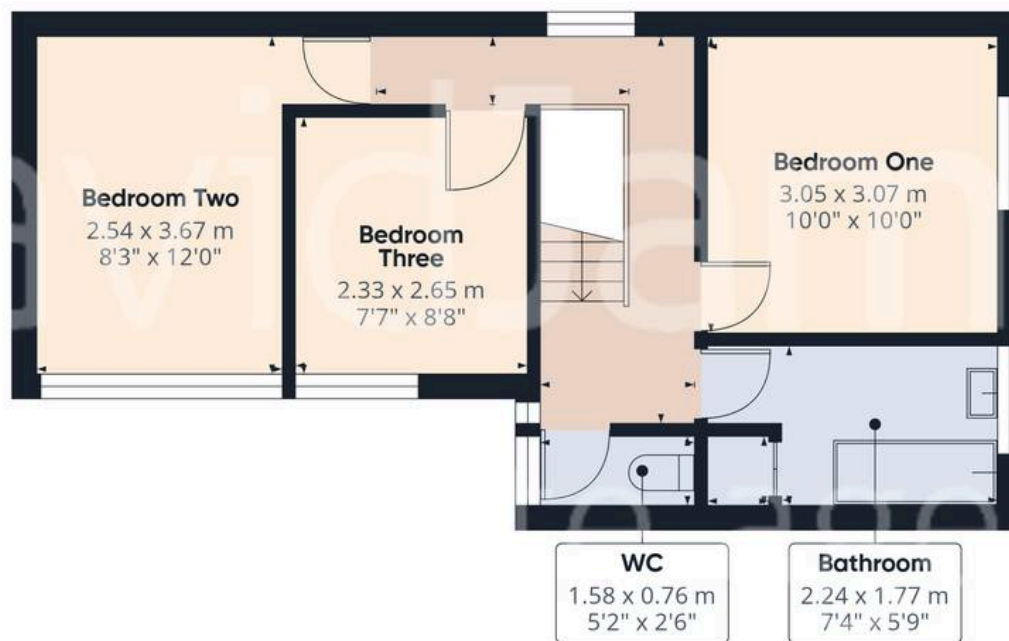








Floor 0



Floor 1

Approximate total area⁽¹⁾

100.3 m²

1079 ft²

(1) Excluding balconies and terraces

Calculations reference the RICS IPMS 3C standard. Measurements are approximate and not to scale. This floor plan is intended for illustration only.

GIRAFFE360



David James Estate Agents

David James Estate Agents, 45B Plains Road – NG3 5JU

0115 962 4213 • mapperley@david-james.com • www.david-james.com

These particulars are produced in good faith and are set out as a general guide only. Measurements are approximate and floor plans are for illustrative purposes only. Services have not been tested. We have established professional relationships with third-party suppliers for the provision of services to Clients, details of which can be found on the property listing page on our website.