



14 Parry Court Hazel Grove, Mapperley – NG3 6DR

Guide Price £220,000

DavidJames
the estate agent



14 Parry Court Hazel Grove

Mapperley, Nottingham

Ground floor 2 bed retirement apartment for over 55's with Mapperley's amenities on the doorstep, available with no chain! Perfect for those looking to downsize to convenient single-storey living!

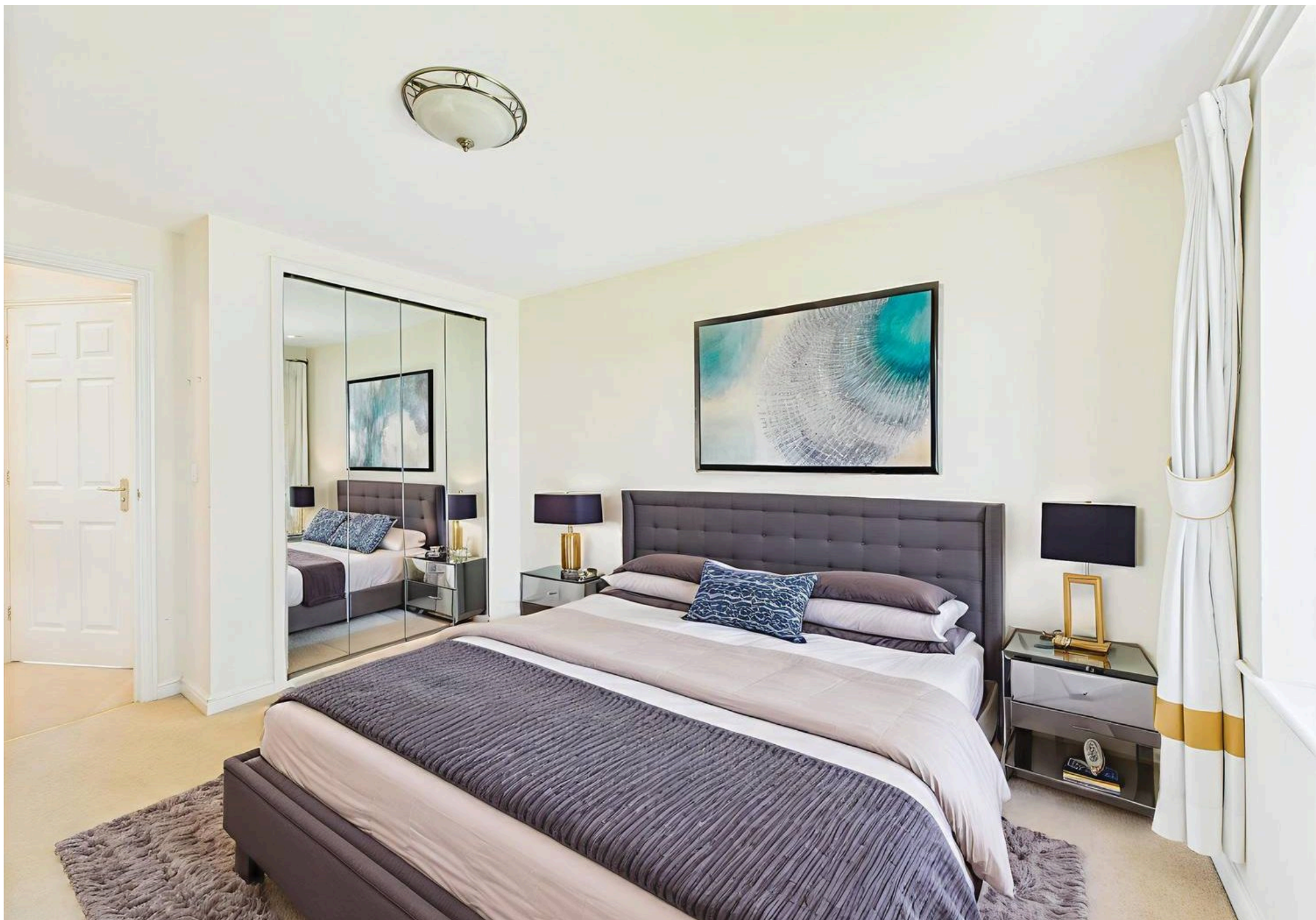
Council Tax band: C

Tenure: Leasehold

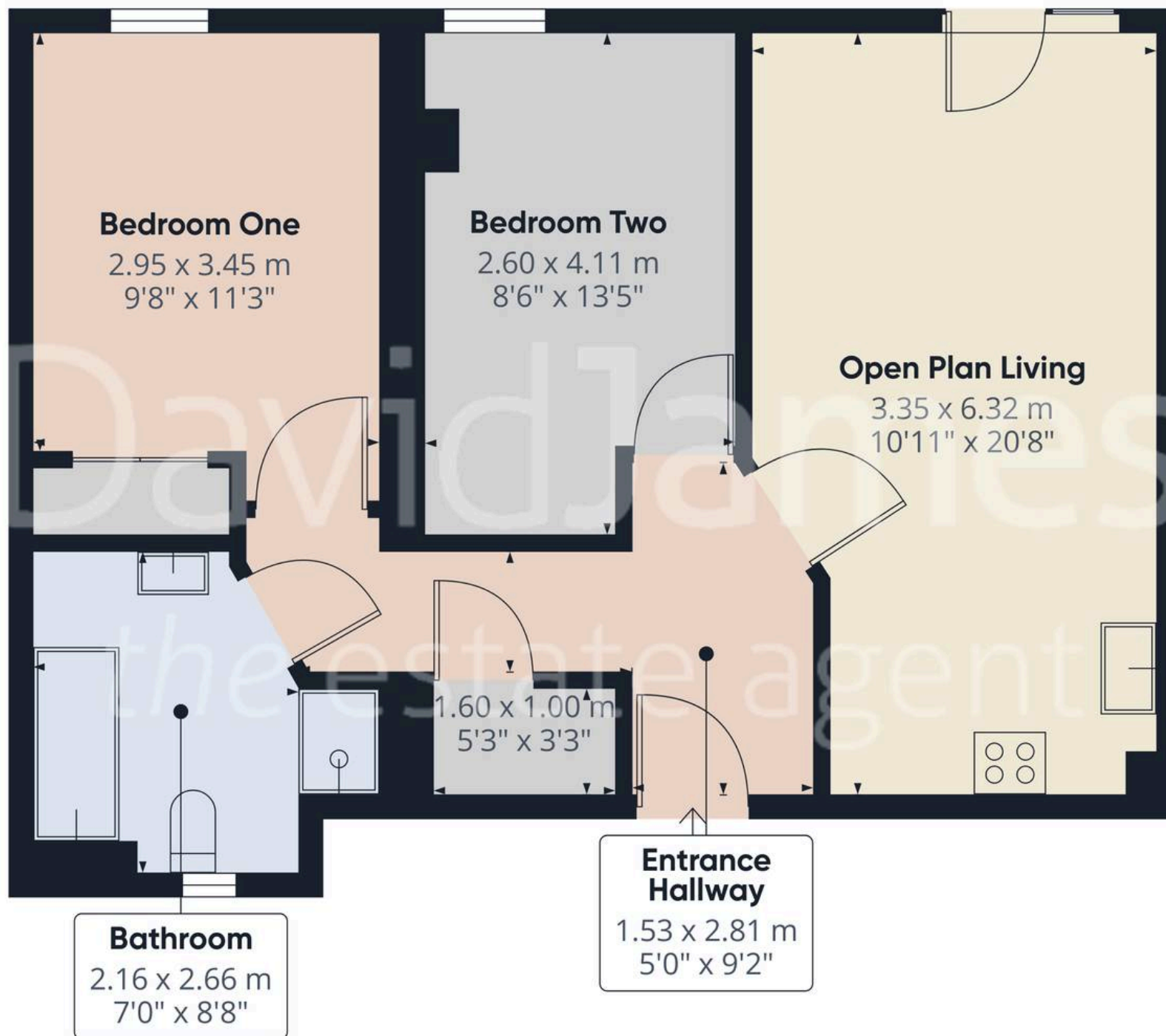
EPC Energy Efficiency Rating: C

EPC Environmental Impact Rating: C

- Ground floor retirement apartment for the over 55's
- Offered to the market with no upward chain
- Ideal for those seeking independent retirement living
- Mapperley's excellent amenities and frequent bus services on the doorstep
- Fantastic open plan living space with French door onto communal landscaped gardens
- Modern kitchen with integrated oven with hob, microwave and fridge/freezer
- Two bedrooms (main bedroom with in-built wardrobes)
- Bathroom with white suite and separate shower cubicle
- Communal resident's lounge, laundry room and private parking
- House manager and 24 hour emergency careline system







Approximate total area⁽¹⁾

56.4 m²

608 ft²

(1) Excluding balconies and terraces

Calculations reference the RICS IPMS 3C standard. Measurements are approximate and not to scale. This floor plan is intended for illustration only.

GIRAFFE360



David James Estate Agents

David James Estate Agents, 45B Plains Road – NG3 5JU

0115 962 4213 • mapperley@david-james.com • www.david-james.com

These particulars are produced in good faith and are set out as a general guide only. Measurements are approximate and floor plans are for illustrative purposes only. Services have not been tested. We have established professional relationships with third-party suppliers for the provision of services to Clients, details of which can be found on the property listing page on our website.