

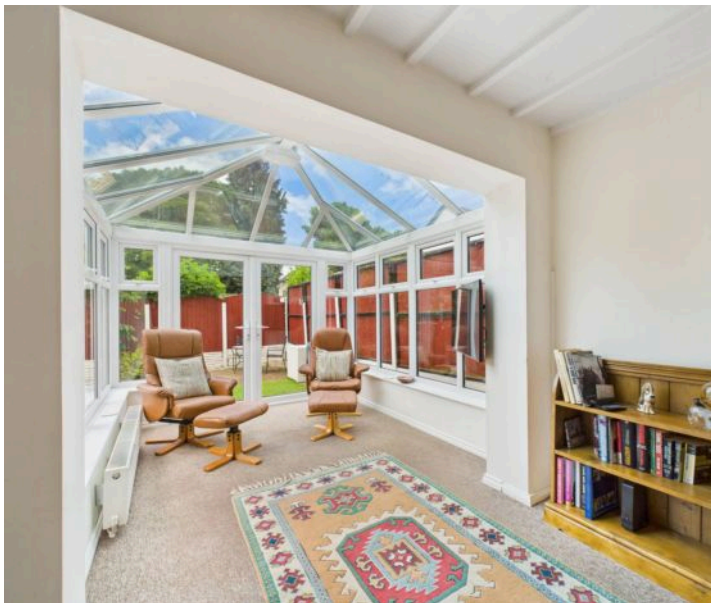


## 2 Featherstone Close, Gedling - NG4 4JA

Guide Price £270,000

DavidJames  
the estate agent





## 2 Featherstone Close

Gedling, Nottingham

Attractive 3-bed detached home with modern interiors, conservatory, garage and a low-maintenance garden. Available with no upward chain and close to both Gedling and Mapperley's amenities and schools!

Council Tax band: C

Tenure: Freehold

EPC Energy Efficiency Rating: E

EPC Environmental Impact Rating: E

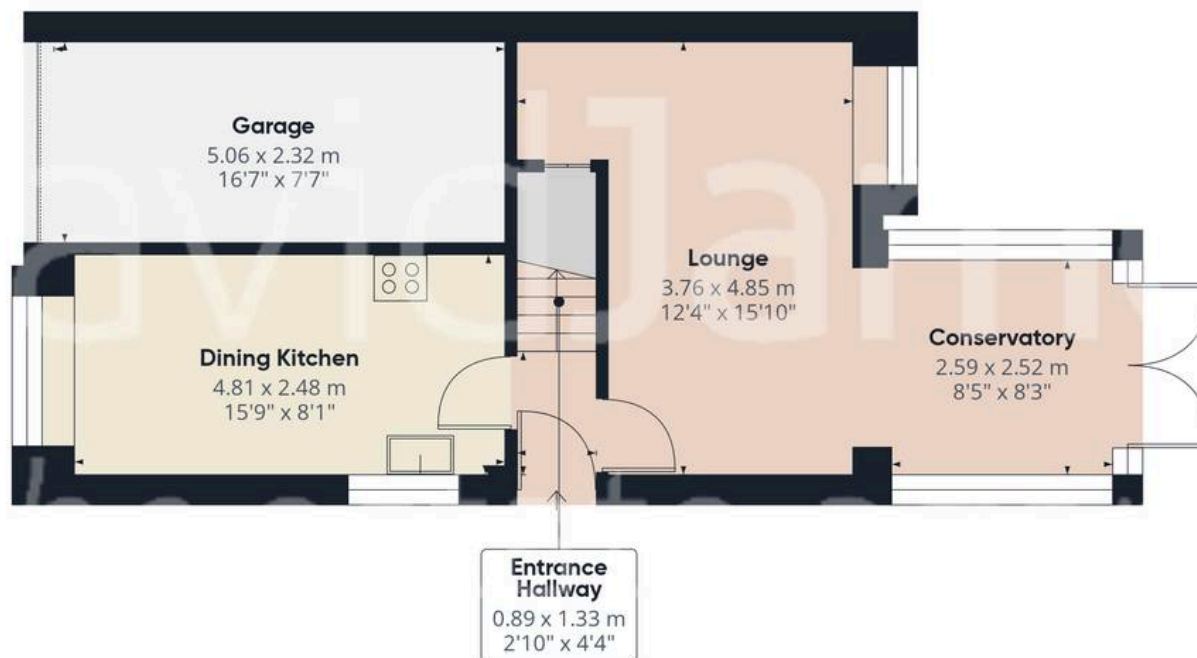
- Well-presented detached family home
- Offered to the market with no upward chain
- Convenient access for Mapperley and Gedling's nearby amenities, schools and bus services
- Bright and spacious lounge
- Superb glass-roof conservatory with French doors
- Bright dual-aspect dining kitchen with integrated cooking appliances
- Three neutrally decorated and generously-proportioned double bedrooms
- Modern shower room with a three-piece suite (including a large walk-in shower cubicle)
- Low-maintenance garden with patio, gravel, artificial lawn and mature trees
- Driveway and garage providing off-street parking











Floor 0

Approximate total area<sup>(1)</sup>

90 m<sup>2</sup>

969 ft<sup>2</sup>



Floor 1

(1) Excluding balconies and terraces

Calculations reference the RICS IPMS 3C standard. Measurements are approximate and not to scale. This floor plan is intended for illustration only.

GIRAFFE360





## David James Estate Agents

David James Estate Agents, 45B Plains Road – NG3 5JU

0115 962 4213 • [mapperley@david-james.com](mailto:mapperley@david-james.com) • [www.david-james.com](http://www.david-james.com)

These particulars are produced in good faith and are set out as a general guide only. Measurements are approximate and floor plans are for illustrative purposes only. Services have not been tested. We have established professional relationships with third-party suppliers for the provision of services to Clients, details of which can be found on the property listing page on our website.