



20 Renshaw Drive, Gedling – NG4 4LS

Guide Price **£165,000**

DavidJames
the estate agent



20 Renshaw Drive

Gedling, Nottingham

Modern first-floor apartment close to the stunning Gedling Country Park! Boasting an open-plan living area, fitted kitchen, 2 double beds, an en-suite and bathroom plus an allocated parking space!

Council Tax band: B

Tenure: Leasehold

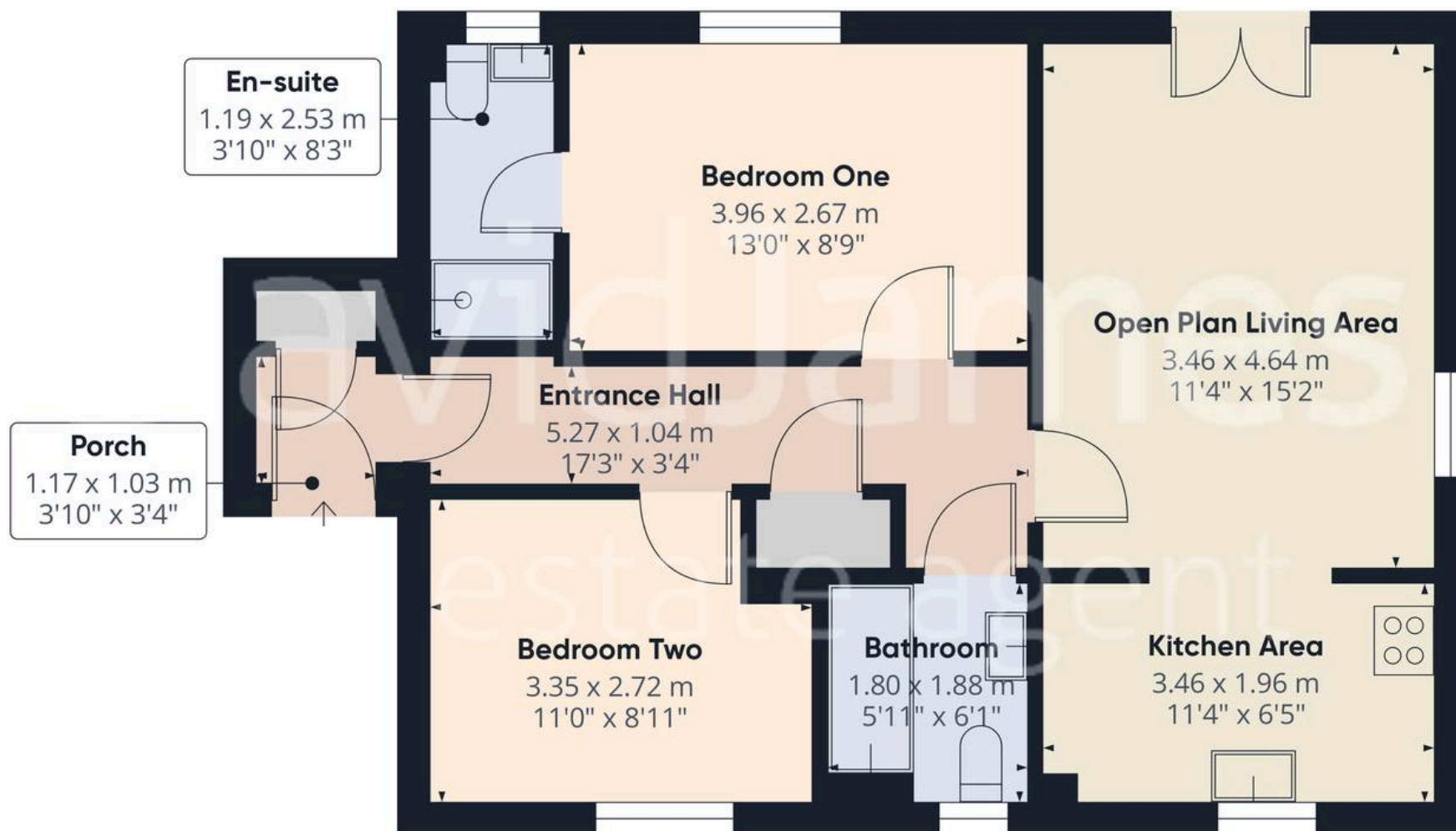
EPC Energy Efficiency Rating: B

EPC Environmental Impact Rating: B

- Modern first floor apartment
- Close to both Mapperley and Gedling's nearby amenities
- Within easy reach of the stunning Gedling Country Park
- Ideal for a first-time buyer, investor or professionals
- Communal entrance lobby with intercom system
- Bright open plan living area with a feature Juliet balcony
- Modern fitted kitchen with a range of integrated appliances
- Two double bedrooms (main bedroom with en-suite shower room)
- Main bathroom with a three-piece contemporary white suite
- Allocated parking space with further open visitor parking







Approximate total area⁽¹⁾
58.3 m²
628 ft²

(1) Excluding balconies and terraces

While every attempt has been made to ensure accuracy, all measurements are approximate, not to scale. This floor plan is for illustrative purposes only.

Calculations are based on RICS IPMS 3C standard.

GIRAFFE360



David James Estate Agents

David James Estate Agents, 45B Plains Road – NG3 5JU

0115 962 4213 • mapperley@david-james.com • www.david-james.com

These particulars are produced in good faith and are set out as a general guide only. Measurements are approximate and floor plans are for illustrative purposes only. Services have not been tested. We have established professional relationships with third-party suppliers for the provision of services to Clients, details of which can be found on the property listing page on our website.