



93 Kent Road, Mapperley, Nottingham, NG3 6BN

Guide Price **£280,000 – £290,000**

DavidJames
the estate agent



93 Kent Road

Mapperley, Nottingham

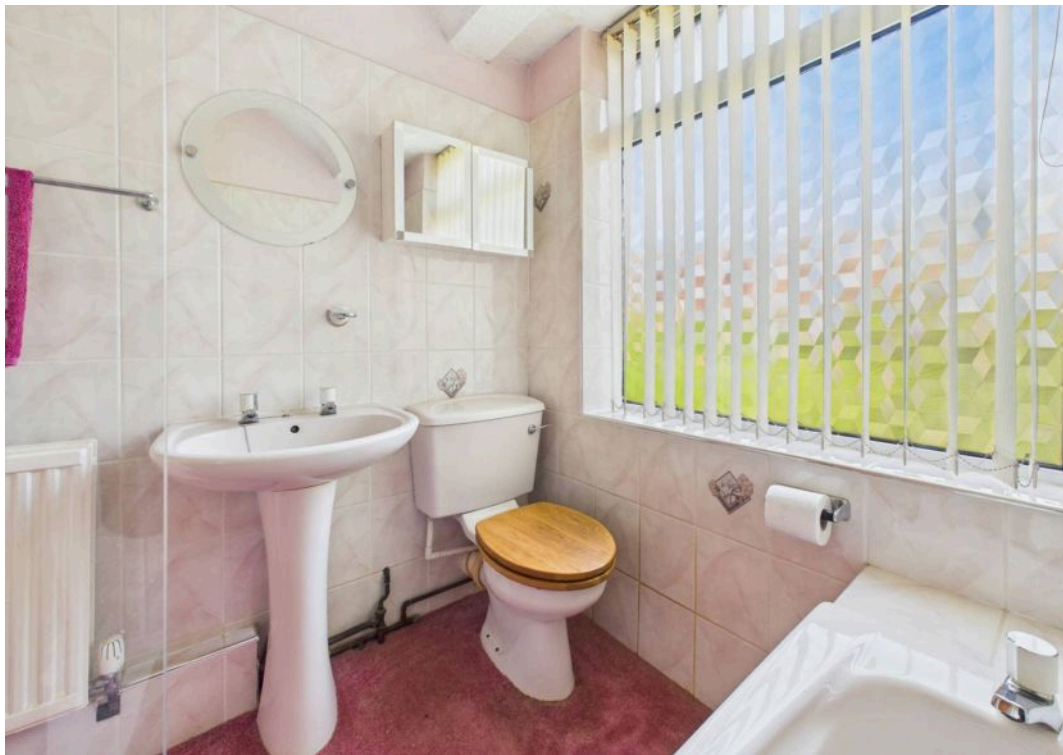
Semi-detached property sold with no chain. 2 reception rooms, bright kitchen, 3 bedrooms, family bathroom, generous garden, parking, UPVC windows, gas heating. Close to amenities.

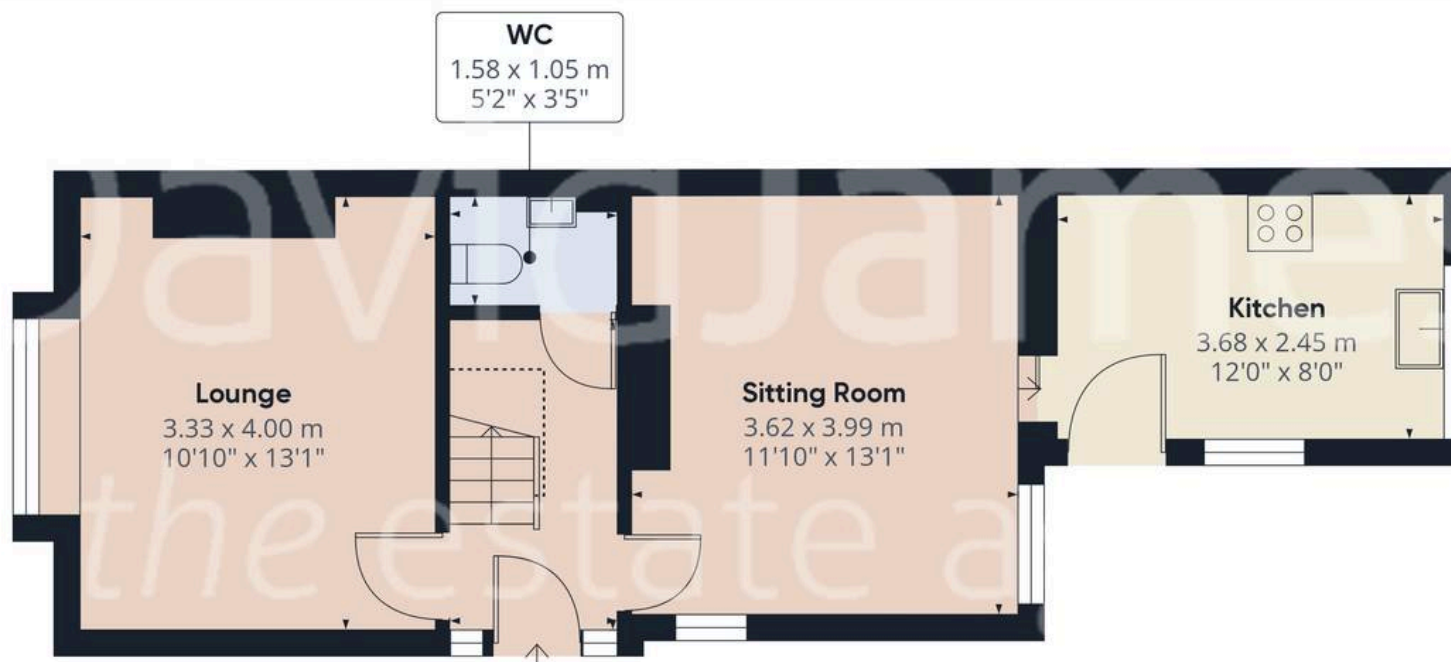
Council Tax band: B

Tenure: Freehold

- Semi-detached home in a popular residential area
- Three well proportioned bedrooms
- Two bright reception rooms for versatile living
- Kitchen with dual aspect windows and appliances
- Well appointed family bathroom and additional ground floor Wc for added convenience
- Gas central heating, UPVC double glazing
- Spacious rear garden with lawn, patio, and mature planting
- Off-road parking for added convenience
- Close to a wide range of local amenities, schools and public transport links
- Sold with no upward chain







Approximate total area⁽¹⁾

81.31 m²

875.21 ft²

Reduced headroom

0.97 m²

10.43 ft²

(1) Excluding balconies and terraces

Reduced headroom

Below 1.5 m/5 ft

While every attempt has been made to ensure accuracy, all measurements are approximate, not to scale. This floor plan is for illustrative purposes only.

Calculations are based on RICS IPMS 3C standard.

GIRAFFE360





David James Estate Agents

David James Estate Agents, 45B Plains Road – NG3 5JU

0115 962 4213 • mapperley@david-james.com • www.david-james.com

These particulars are produced in good faith and are set out as a general guide only. Measurements are approximate and floor plans are for illustrative purposes only. Services have not been tested. We have established professional relationships with third-party suppliers for the provision of services to Clients, details of which can be found on the property listing page on our website.