



22a Church Street, Lambley – NG4 4QB

Guide Price **£195,000**

DavidJames
the estate agent



22a Church Street

Lambley, Nottingham

Charming 1-bed cottage in the highly sought after village of Lambley!. Lounge/dining room, modern kitchen, double bedroom, luxury bathroom, established garden. Original features and views of Lambley Church!

Council Tax band: B

Tenure: Freehold

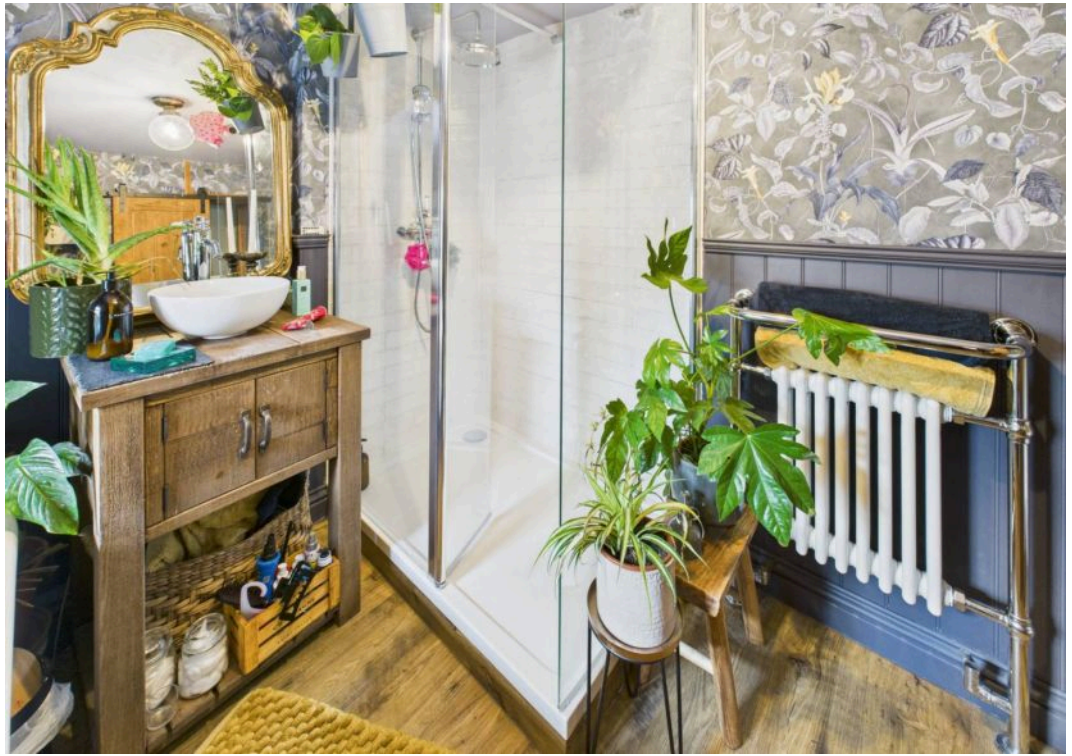
EPC Energy Efficiency Rating: C

EPC Environmental Impact Rating: C

- Delightful cottage
- Lounge/dining room with fireplace and log burner
- Bespoke modern kitchen with integrated oven and feature stable door leading to the rear garden
- One double bedroom with original fireplace and views of Lambley Church
- Superb bathroom/WC with freestanding roll top bath, washstand and separate shower cubicle with mains pressure shower
- Combination gas central heating
- UPVC double glazing with feature sash windows to the front elevation
- Established rear garden with block paved patio and brick-built outbuildings
- Viewing strongly recommended
- Highly sought after village location in Lambley









Floor 0

Approximate total area⁽¹⁾

35.08 m²

377.59 ft²



Floor 1

(1) Excluding balconies and terraces

While every attempt has been made to ensure accuracy, all measurements are approximate, not to scale. This floor plan is for illustrative purposes only.

Calculations are based on RICS IPMS 3C standard.

GIRAFFE360



David James Estate Agents

David James Estate Agents, 45B Plains Road – NG3 5JU

0115 962 4213 • mapperley@david-james.com • www.david-james.com

These particulars are produced in good faith and are set out as a general guide only. Measurements are approximate and floor plans are for illustrative purposes only. Services have not been tested. We have established professional relationships with third-party suppliers for the provision of services to Clients, details of which can be found on the property listing page on our website.