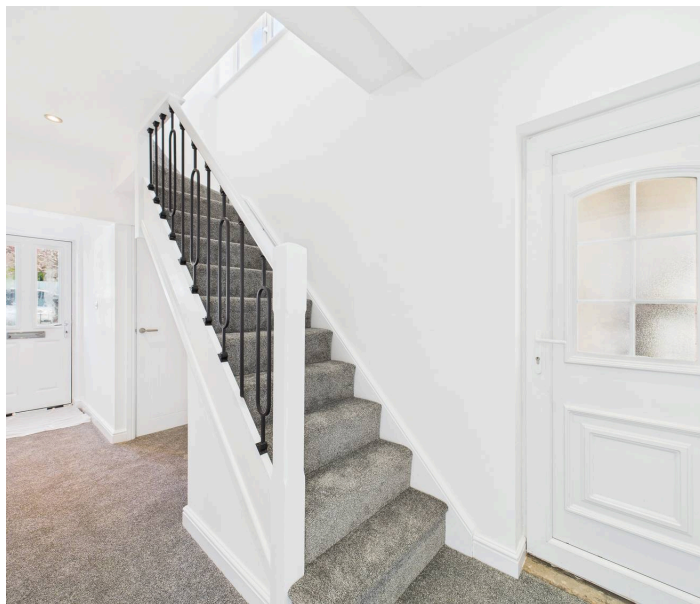




20 Haywood Road, Mapperley – NG3 6AB

Guide Price **£250,000**

DavidJames
the estate agent



20 Haywood Road

Mapperley, Nottingham

Stylish semi-detached home offered with no chain, close to Mapperley's vibrant amenities! Boasting a lounge, dining kitchen, 3 beds and both an en-suite and shower room plus a southerly-facing garden!

Council Tax band: B

Tenure: Freehold

EPC Energy Efficiency Rating: D

EPC Environmental Impact Rating: E

- Well-presented semi-detached family home
- Recently redecorated throughout with neutral decor
- Offered to the market with no upward chain
- Spacious lounge with inglenook fireplace and bay fronted window
- Superb open plan kitchen with an adjoining versatile dining/sitting area
- Three bedrooms (including a modern en-suite)
- Contemporary family shower room with a three-piece suite
- Generous, enclosed and south-easterly facing lawned garden with an initial decked patio terrace
- Within easy reach of Mapperley's vibrant amenities, popular schools and frequent bus services
- Wonderful views over Nottinghamshire available to the rear







Floor 0



Floor 1

Approximate total area⁽¹⁾

77.53 m²

834.52 ft²

Reduced headroom

0.49 m²

5.32 ft²

(1) Excluding balconies and terraces

Reduced headroom

..... Below 1.5 m/5 ft

While every attempt has been made to ensure accuracy, all measurements are approximate, not to scale. This floor plan is for illustrative purposes only.

Calculations are based on RICS IPMS 3C standard.

GIRAFFE360



David James Estate Agents

David James Estate Agents, 45B Plains Road – NG3 5JU

0115 962 4213 • mapperley@david-james.com • www.david-james.com

These particulars are produced in good faith and are set out as a general guide only. Measurements are approximate and floor plans are for illustrative purposes only. Services have not been tested. We have established professional relationships with third-party suppliers for the provision of services to Clients, details of which can be found on the property listing page on our website.