



17 Hopkin Court Mapperley Plains, Nottingham – NG3 5SS

Guide Price £270,000

DavidJames
the estate agent



17 Hopkin Court Mapperley Plains

Nottingham, Nottingham

Modern end-terrace family home with no chain, close to Mapperley's amenities and Gedling Country Park! Boasting a lounge, dining kitchen, 3 beds, an en-suite and bathroom plus a garden and driveway.

Council Tax band: C

Tenure: Freehold

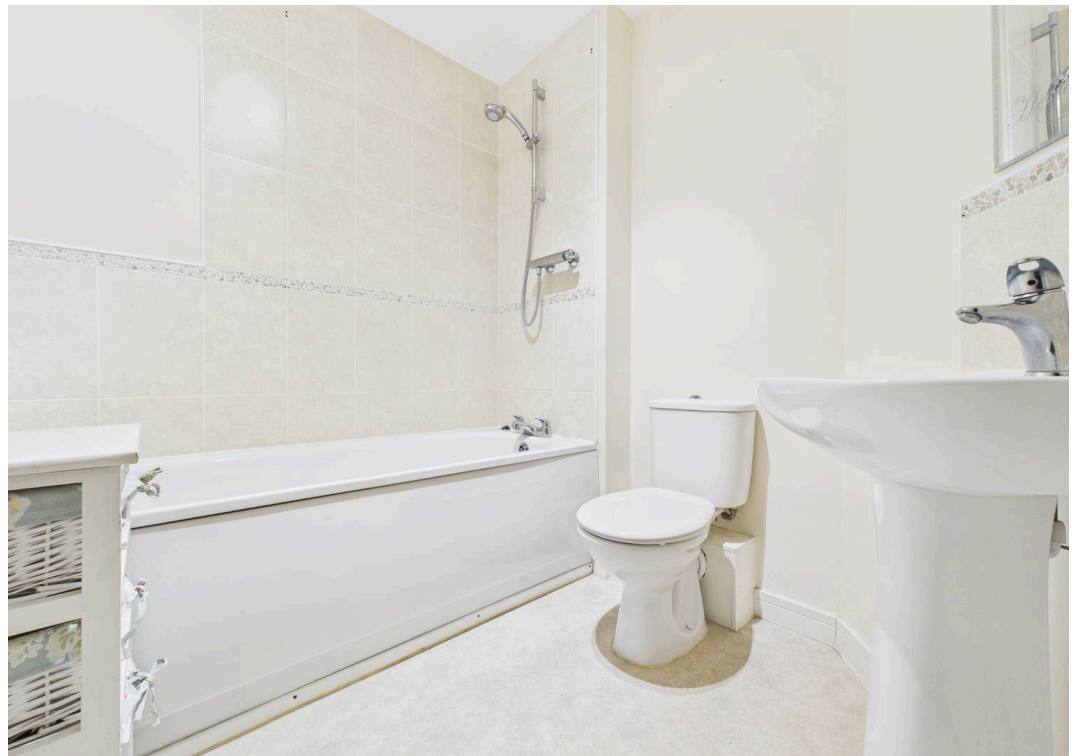
EPC Energy Efficiency Rating: C

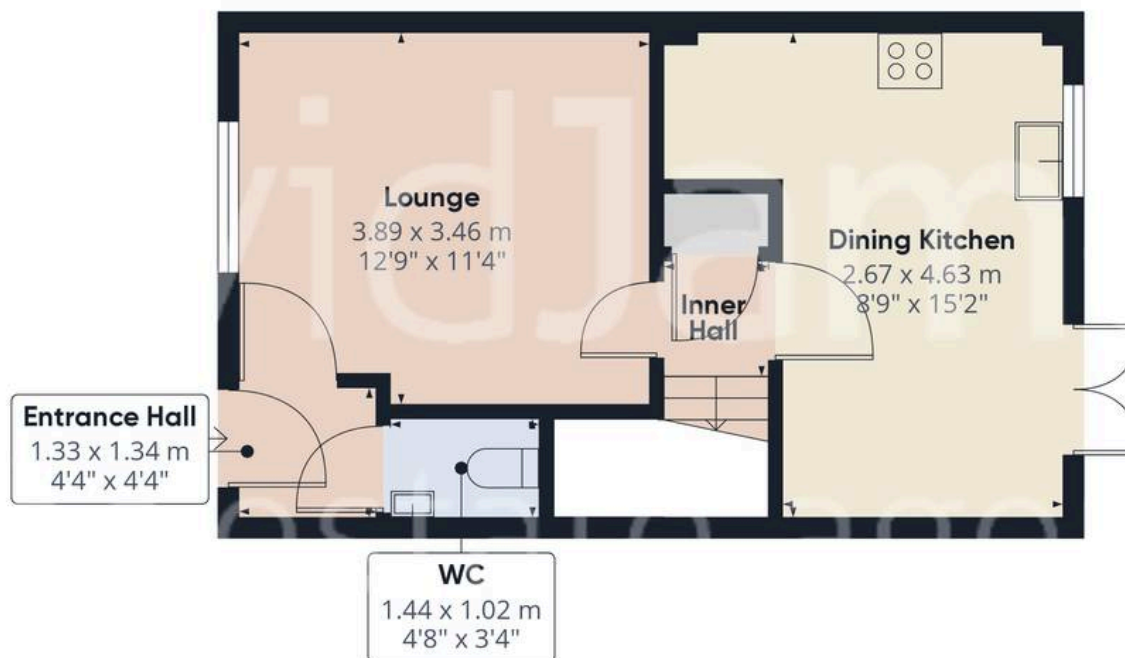
EPC Environmental Impact Rating: B

- Modern end-terrace family home
- Offered to the market with no upward chain
- A short walk from local shops and Gedling Country Park whilst also within easy reach of Mapperley's amenities
- initial entrance hall with a cloakroom/WC
- Good-sized lounge
- Dining kitchen with integrated cooking appliances and French doors
- Three first floor bedrooms (main bedroom with an en-suite shower room)
- Main family bathroom with a three-piece white suite
- Lawned and enclosed rear garden
- Driveway and carport provide ample off-street parking

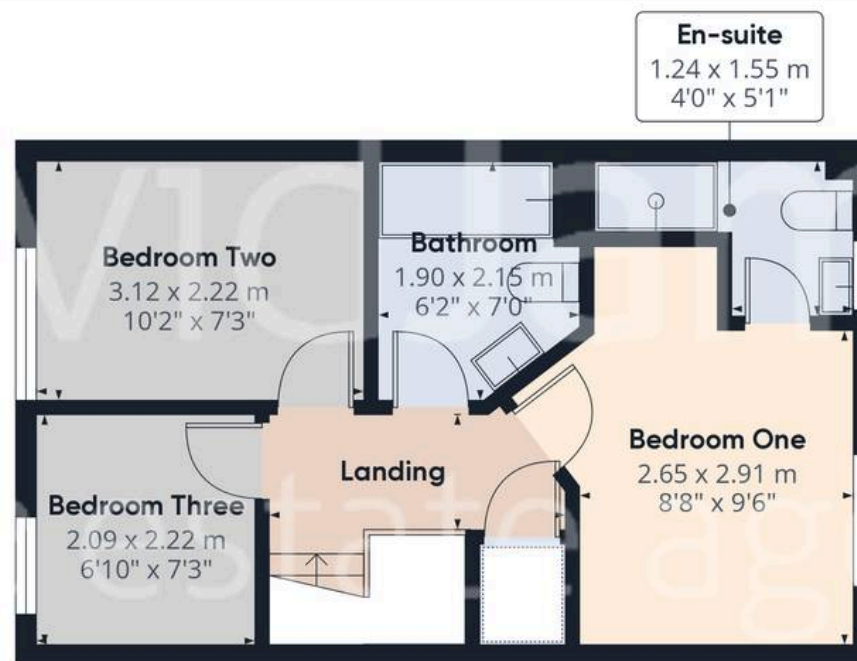








Floor 0



Floor 1

Approximate total area⁽¹⁾

64.78 m²

697.29 ft²

(1) Excluding balconies and terraces

While every attempt has been made to ensure accuracy, all measurements are approximate, not to scale. This floor plan is for illustrative purposes only.

Calculations were based on RICS IPMS 3C standard. Please note that calculations were adjusted by a third party and therefore may not comply with RICS IPMS 3C.

GIRAFFE360



David James Estate Agents

David James Estate Agents, 45B Plains Road – NG3 5JU

0115 962 4213 • mapperley@david-james.com • www.david-james.com

These particulars are produced in good faith and are set out as a general guide only. Measurements are approximate and floor plans are for illustrative purposes only. Services have not been tested. We have established professional relationships with third-party suppliers for the provision of services to Clients, details of which can be found on the property listing page on our website.