



326 Westdale Lane, Mapperley – NG3 6ET

Guide Price £550,000 – £600,000

DavidJames
the estate agent



326 Westdale Lane

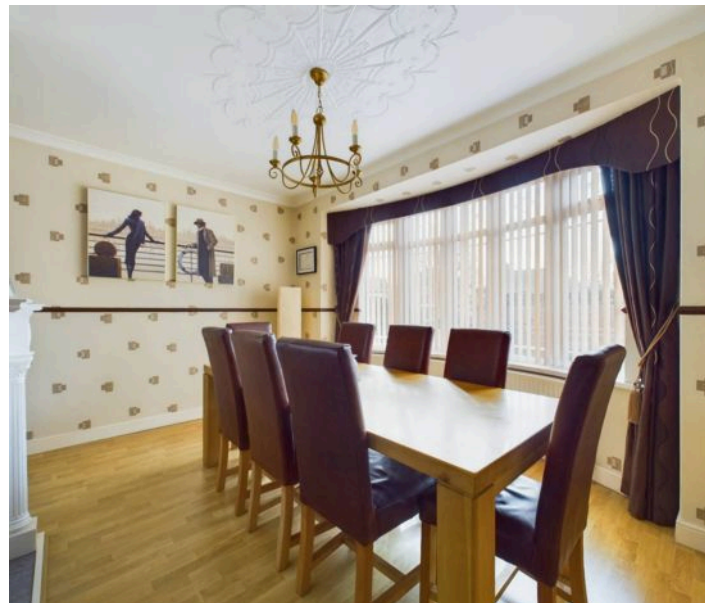
Mapperley, Nottingham

GUIDE PRICE £550,000 - £600,000 Extended detached family home offering spacious living areas, a superb kitchen and 4 bedrooms alongside a generous lawned rear garden, gated driveway and double garage. Viewing absolutely essential!

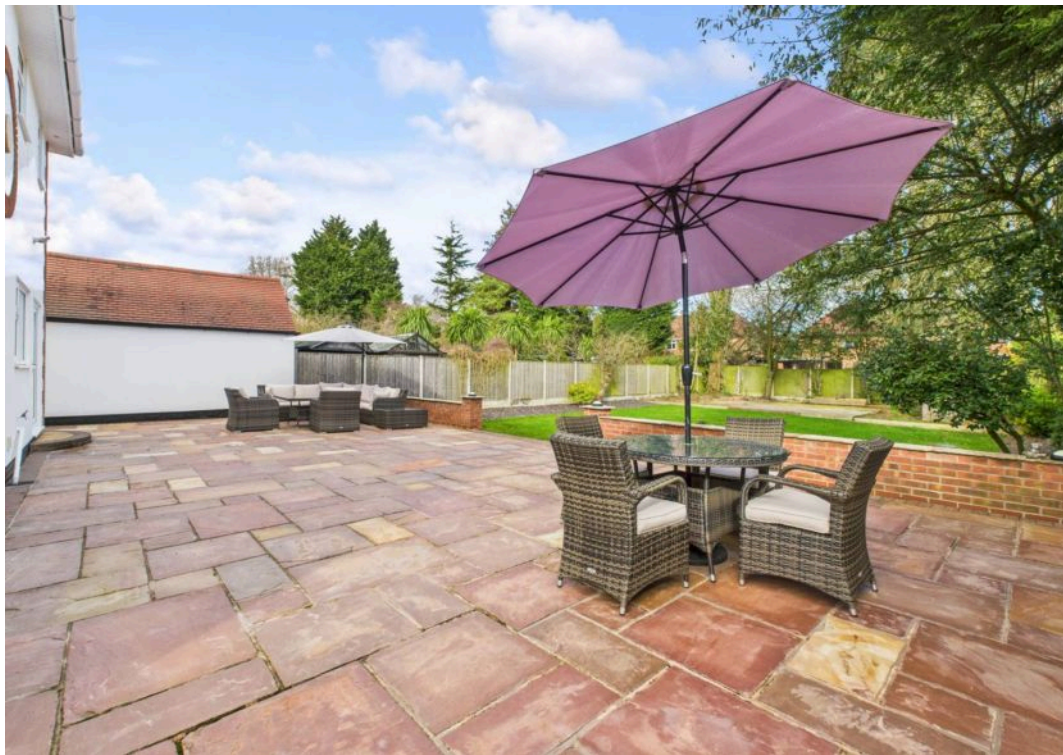
Council Tax band: E

Tenure: Freehold

- Extended detached family home
- Within easy reach of Mapperley's excellent nearby amenities, schools and frequent bus services
- Welcoming entrance hall with a ground floor modern shower room/WC
- Bright and spacious lounge with a fire and patio doors
- Separate versatile dining room with a feature bow window
- Superb breakfast kitchen with underfloor heating and a range of appliances
- Four bedrooms (main bedroom with a dressing area and en-suite)
- Large family bathroom with a Jacuzzi-style bath and separate shower
- Generous rear garden with a substantial paved patio area, lawn and outbuilding storage
- Gated driveway leading to a double garage with front and rear access









Floor 0

Approximate total area⁽¹⁾

205.93 m²

2216.61 ft²



Floor 1

(1) Excluding balconies and terraces

While every attempt has been made to ensure accuracy, all measurements are approximate, not to scale. This floor plan is for illustrative purposes only.

Calculations were based on RICS IPMS 3C standard. Please note that calculations were adjusted by a third party and therefore may not comply with RICS IPMS 3C.

GIRAFFE360



David James Estate Agents

David James Estate Agents, 45B Plains Road – NG3 5JU

0115 962 4213 • mapperley@david-james.com • www.david-james.com

These particulars are produced in good faith and are set out as a general guide only. Measurements are approximate and floor plans are for illustrative purposes only. Services have not been tested. We have established professional relationships with third-party suppliers for the provision of services to Clients, details of which can be found on the property listing page on our website.