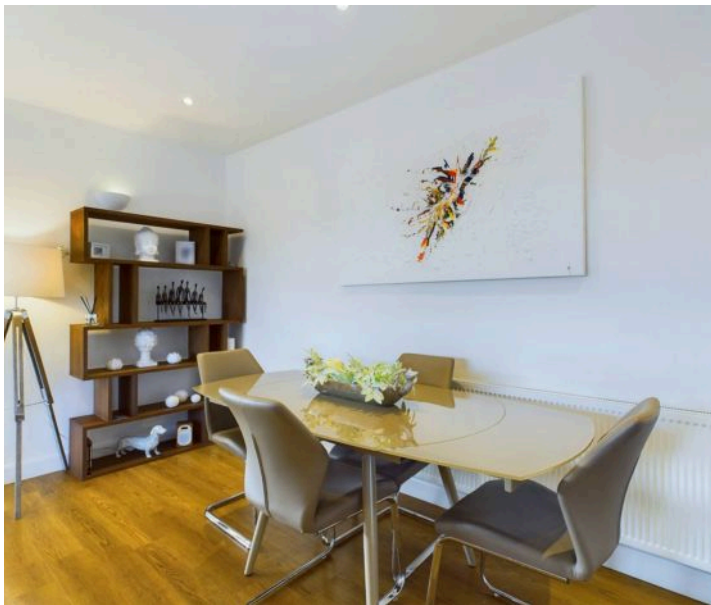




5 Cheadle Close, Mapperley – NG3 6FR

Guide Price £400,000

DavidJames
the estate agent



5 Cheadle Close

Mapperley, Nottingham

GUIDE PRICE £400,000 - £425,000. Beautiful chalet-style bungalow in a cul-de-sac within easy reach of Mapperley's vibrant amenities. 4 bedrooms, spacious lounge/dining room, sun room, kitchen and a private garden with parking! Council Tax band: E

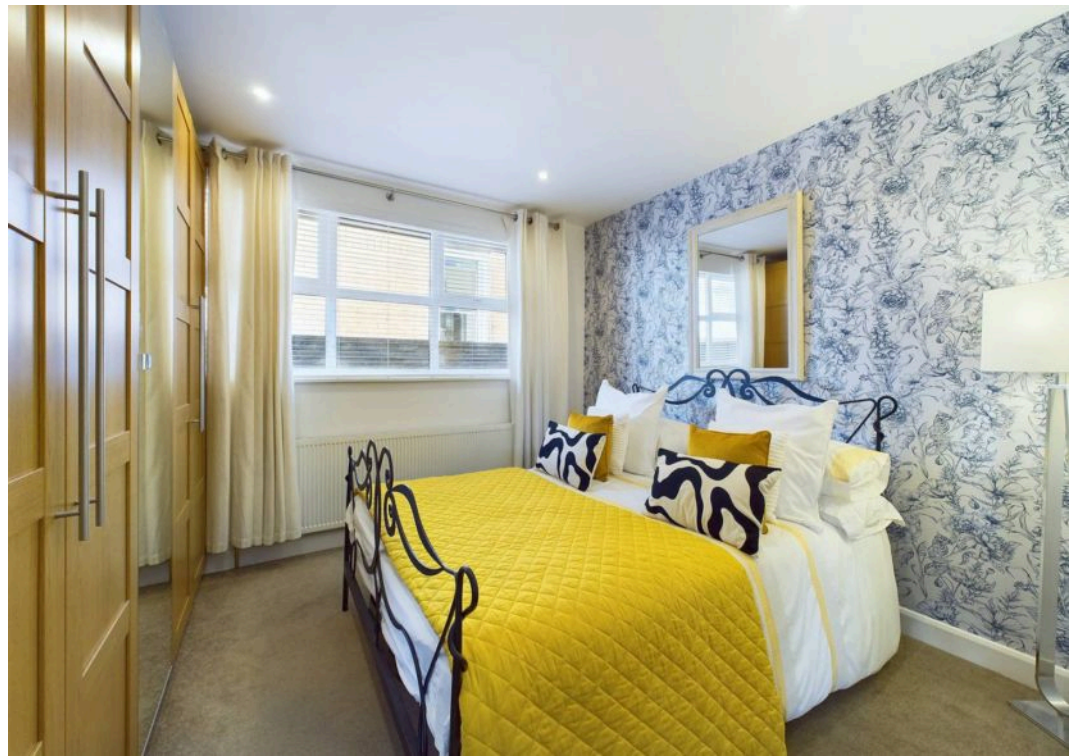
Tenure: Freehold

EPC Energy Efficiency Rating: D

EPC Environmental Impact Rating: E

- Beautifully-presented chalet-style detached bungalow
- Cul-de-sac location close to Mapperley's vibrant amenities
- Welcoming entrance hall and porch with a working burglar alarm system
- Bright and spacious lounge/dining room with a feature stove effect electric fire
- Superb southerly-facing sun room with garden access
- Fitted breakfast kitchen with integrated cooking appliances
- Four versatile bedrooms (two ground floor and two first floor)
- Modern fully-tiled shower room with a three-piece suite
- Fantastic gardens incorporating feature patio seating areas
- Driveway and garage provide off street parking







Floor 0



Floor 1

Approximate total area⁽¹⁾

117.87 m²

1268.77 ft²

Reduced headroom

1.48 m²

15.9 ft²

(1) Excluding balconies and terraces

Reduced headroom

..... Below 1.5 m/5 ft.

While every attempt has been made to ensure accuracy, all measurements are approximate, not to scale. This floor plan is for illustrative purposes only.

Calculations were based on RICS IPMS 3C standard. Please note that calculations were adjusted by a third party and therefore may not comply with RICS IPMS 3C.

GIRAFFE360



David James Estate Agents

David James Estate Agents, 45B Plains Road – NG3 5JU

0115 962 4213 • mapperley@david-james.com • www.david-james.com

These particulars are produced in good faith and are set out as a general guide only. Measurements are approximate and floor plans are for illustrative purposes only. Services have not been tested. We have established professional relationships with third-party suppliers for the provision of services to Clients, details of which can be found on the property listing page on our website.