



26 Goddard Court Mapperley Plains, Nottingham – NG3 5RP

Guide Price £220,000

DavidJames
the estate agent



26 Goddard Court Mapperley Plains

Nottingham, Nottingham

Well-presented modern coach house offering two double bedrooms, spacious living accommodation and a driveway with garage. Within easy reach of Mapperley's amenities and the stunning Gedling Country Park!

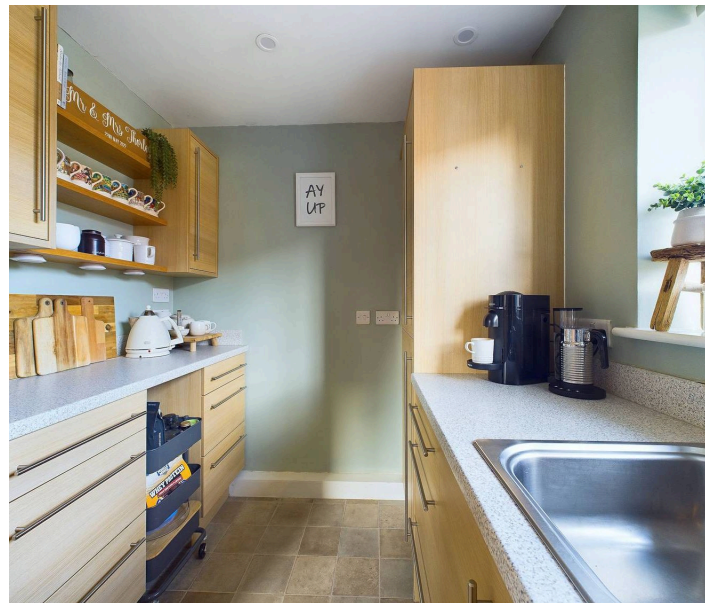
Council Tax band: C

Tenure: Freehold

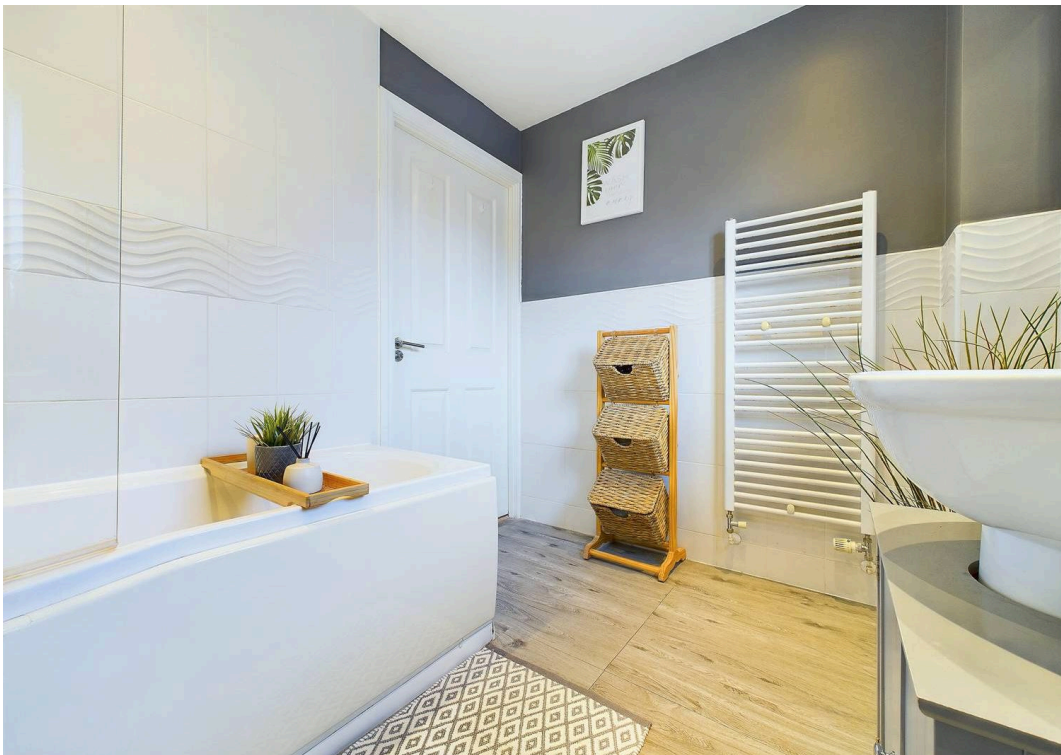
EPC Energy Efficiency Rating: C

EPC Environmental Impact Rating: B

- Well-presented modern coach house
- Close to Mapperley's excellent amenities, bus services and the stunning Gedling Country Park
- Entrance hall with a working alarm system
- Spacious lounge/dining room with timber-finish flooring and dual aspect windows
- Modern kitchen with integrated appliances
- Two double bedrooms (main bedroom with a walk-in wardrobe/dressing area)
- Contemporary bathroom with modern three-piece suite
- Gas central heating & double glazing
- Drive & garage with a useful utility room
- Low-maintenance front yard area









Floor 0



Floor 1

Approximate total area⁽¹⁾

81.45 m²

876.72 ft²

(1) Excluding balconies and terraces

While every attempt has been made to ensure accuracy, all measurements are approximate, not to scale. This floor plan is for illustrative purposes only.

Calculations are based on RICS IPMS 3C standard.

GIRAFFE360



David James Estate Agents

David James Estate Agents, 45B Plains Road – NG3 5JU

0115 962 4213 • mapperley@david-james.com • www.david-james.com

These particulars are produced in good faith and are set out as a general guide only. Measurements are approximate and floor plans are for illustrative purposes only. Services have not been tested. We have established professional relationships with third-party suppliers for the provision of services to Clients, details of which can be found on the property listing page on our website.