



DavidJames
the estate agent

Beech Court, Mapperley, Nottingham, NG3 5PZ

Guide Price £90,000

About This Property

Welcome to this first floor retirement apartment for over 60's in the heart of Mapperley, perfect for those seeking independent living yet with the option to enjoy communal areas for socialising and the security and peace of mind of a 24 hour emergency care-line system and an on-site house manager.

Set within well tended gardens, this apartment is well presented and neutrally decorated with plenty of natural light throughout. The apartment is entered through an entrance hall which leads you through to a lounge/dining room with a feature fire surround and large windows with views of the attractive gardens.

Just off the lounge area is a useful compact kitchen which benefits from an integrated hob, Indesit oven and extractor and a range of wall and floor units for useful storage.

The double bedroom is a generous size with large windows that offer views of the gardens, an emergency pull cord and the benefit of built in mirrored wardrobes. Just off the bedroom is a fully tiled 3 piece bathroom also with an emergency pull cord.

Other benefits include a communal lounge, a laundry room, access to beautifully maintained shared gardens as well as parking for residents (subject to availability).



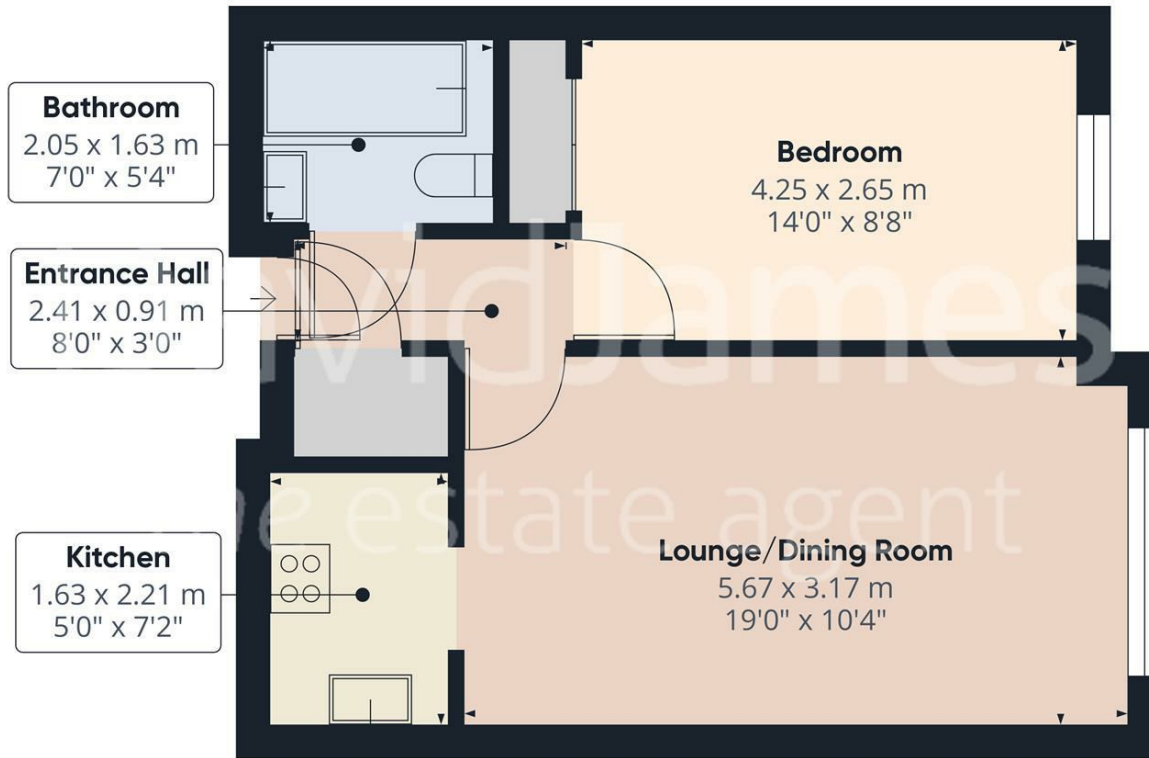
DavidJames
the estate agent

- First floor retirement apartment for over 60's in the heart of Mapperley
- Ideal for independent living with communal areas for socialising
- Bright and neutrally decorated interior with plenty of natural light
- Spacious lounge/dining room with feature fire surround and garden views
- Fitted kitchen with integrated appliances
- Double bedroom with large windows, built-in mirrored wardrobes and emergency pull cord
- Fully tiled 3-piece bathroom
- Beautifully-maintained communal gardens
- Access to communal laundry room and residents lounge
- Parking available for residents (subject to availability)



DavidJames



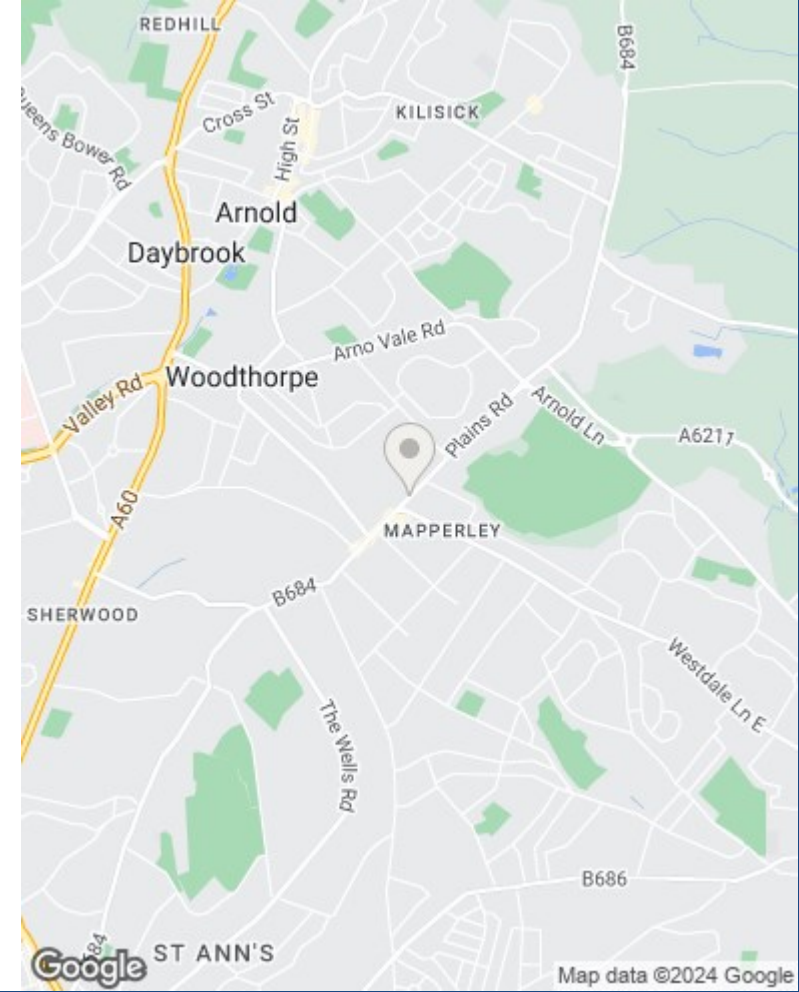


Approximate total area**
41.44 m²
446.06 ft²

(*) Excluding balconies and terraces

While every attempt has been made to ensure accuracy, all measurements are approximate, not to scale. This floor plan is for illustrative purposes only.

GIRAFFE360



These particulars are produced in good faith, are set out as a general guide only and do not constitute any part of a contract. No person in the employment of David James Estate Agents Ltd has any authority to make any representation whatsoever in relation to the property. All services, together with electrical fittings or fitted appliances have NOT been tested. All the measurements given in the details are approximate. Floor plans are for illustrative purposes only and are not drawn to scale. The position and size of doors, windows, appliances and other features are approximate only. The photographs of this property have been taken with a 10mm wide-angle lens. No responsibility can be accepted for any loss or expense incurred in viewing. If you have a property to sell you may wish to take advantage of our free valuation service. David James Estate Agents have established professional relationships with third-party suppliers for the provision of services to Clients. As remuneration for this professional relationship, the agent receives referral commission from the third-party company. David James Estate Agents receives the following commission from each third party supplier on a per referral basis: W A Barnes Ltd: £60 including VAT. All Moves UK Ltd: 18% including VAT of the invoice total (£107 including VAT average). MoveWithUs Limited: £188 including VAT (average).

Council Tax Band: B
Gedling Borough Council
Leasehold

DavidJames
the estate agent

David James Estate Agents
45b Plains Road, Nottingham, NG3 5JU
t: 0115 962 4213 e: mapperley@david-james.com

