



DavidJames
the estate agent

Bourne Street, Netherfield, Nottingham, NG4 2FJ

Guide Price £180,000

About This Property

Welcome to this beautifully refurbished period-style mid-terraced house located in the heart of Netherfield, offered for sale with no upward chain. This property combines classic charm with modern comforts, featuring two spacious double bedrooms perfect for families or professionals.

As you step through the entrance hall, you are greeted by laminate flooring that flows seamlessly into the dining room. The inviting lounge boasts a bay window to the front elevation, providing ample natural light and a cozy space to relax. The adjacent dining room, showcases a period-style cast iron fireplace.

The newly fitted kitchen features a range of grey panelled base and eye-level units, complemented by timber-finish work surfaces. It is equipped with an integrated oven, hob, extractor, and dishwasher. The adjoining utility area has matching laminate flooring and there is a ground floor WC fitted with a modern white suite and washbasin.

Upstairs, you will find two generous double bedrooms, each providing a comfortable space. The newly fitted first-floor bathroom is designed with a contemporary white suite, mains shower, and timber finish laminate flooring.

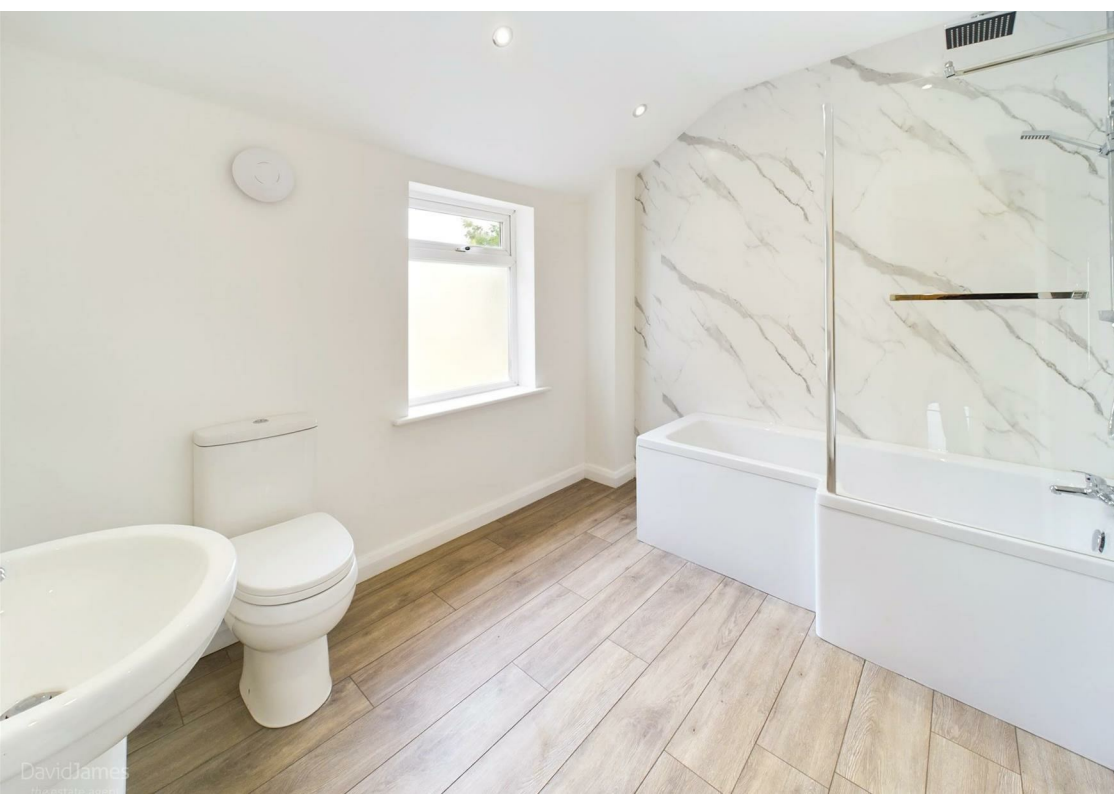
This home benefits from combination gas central heating and UPVC double glazing whilst the enclosed low maintenance gravelled rear garden offers a private outdoor space.

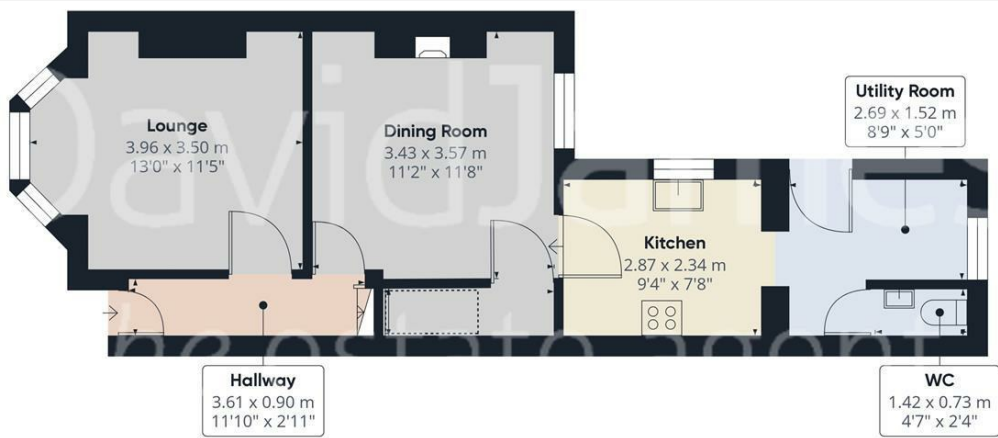
Refurbished throughout with new floor coverings and redecoration, this property is ready to move into and offers a perfect blend of period features and modern living.



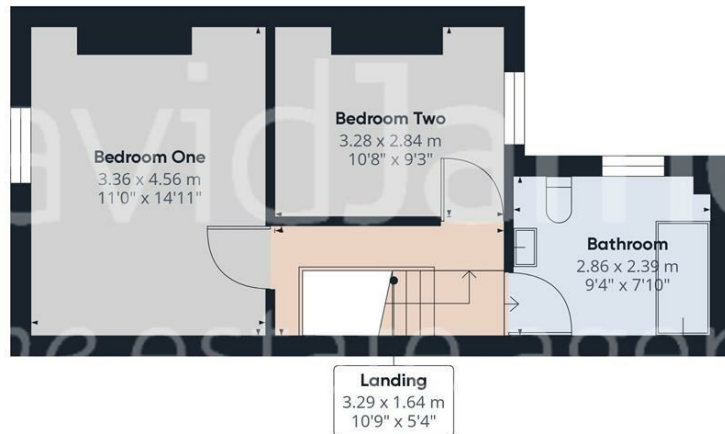
- Refurbished period style mid terraced house sold with no upward chain, two double bedrooms
- Entrance hall with laminate flooring
- Lounge with bay window to the front elevation
- Dining room with laminate flooring and period style cast iron fireplace
- Newly fitted kitchen with laminate flooring and a range of grey panelled base and eye level units with timber finish work surfaces, integrated oven, job, extractor and dishwasher
- Utility area with laminate flooring, adjoining ground floor Wc with white suits and washbasin
- Newly fitted first floor bathroom/Wc with white suite, mains shower and timber finish laminate flooring
- Combination gas central heating, UPVC double glazing
- Enclosed low maintenance gravelled rear garden
- Refurbished throughout with new floor coverings and redecoration







Floor 0



Floor 1



Approximate total area*

76.79 m²
826.6 ft²

Reduced headroom

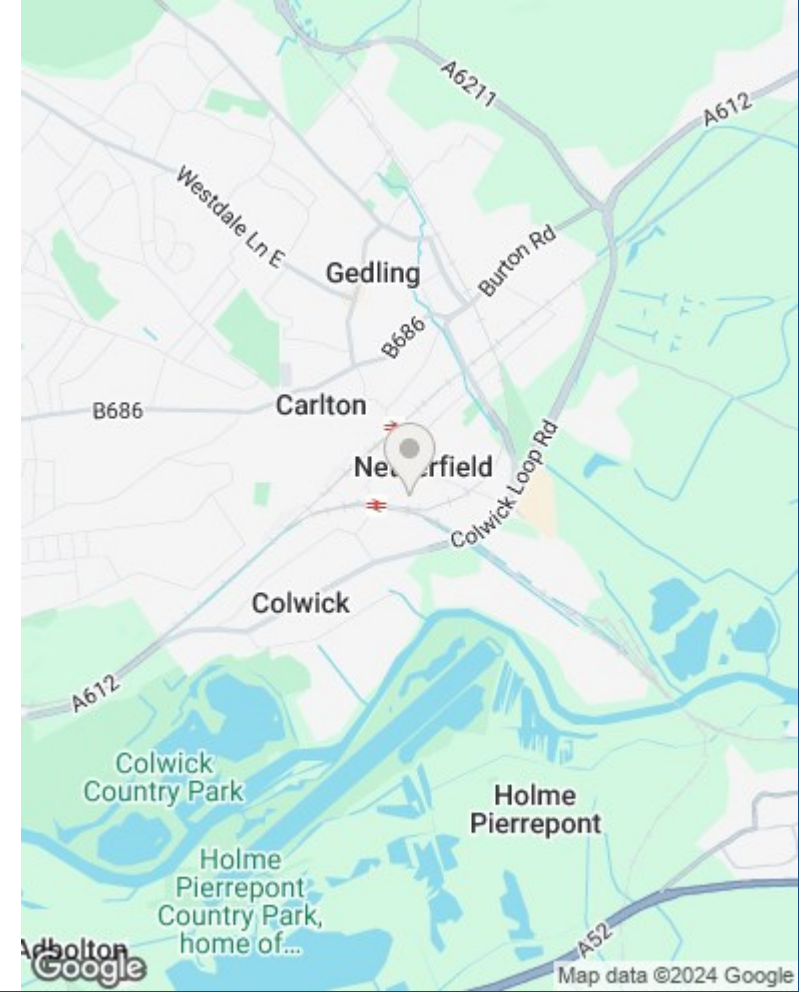
1.01 m²
10.87 ft²

(*) Excluding balconies and terraces

⚠ Reduced headroom
(below 1.5m/4.92ft)

While every attempt has been made to ensure accuracy, all measurements are approximate, not to scale. This floor plan is for illustrative purposes only.

GIRAFFE360



These particulars are produced in good faith, are set out as a general guide only and do not constitute any part of a contract. No person in the employment of David James Estate Agents Ltd has any authority to make any representation whatsoever in relation to the property. All services, together with electrical fittings or fitted appliances have NOT been tested. All the measurements given in the details are approximate. Floor plans are for illustrative purposes only and are not drawn to scale. The position and size of doors, windows, appliances and other features are approximate only. The photographs of this property have been taken with a 10mm wide-angle lens. No responsibility can be accepted for any loss or expense incurred in viewing. If you have a property to sell you may wish to take advantage of our free valuation service. David James Estate Agents have established professional relationships with third-party suppliers for the provision of services to Clients. As remuneration for this professional relationship, the agent receives referral commission from the third-party company. David James Estate Agents receives the following commission from each third party supplier on a per referral basis: W A Barnes Ltd: £60 including VAT. All Moves UK Ltd: 18% including VAT of the invoice total (£107 including VAT average). MoveWithUs Limited: £188 including VAT (average).

Council Tax Band: A
Gedling Borough Council
Freehold

DavidJames
the estate agent

David James Estate Agents
45b Plains Road, Nottingham, NG3 5JU
t: 0115 962 4213 e: mapperley@david-james.com

