



2



1



1



D

DavidJames
the estate agent

Perlethorpe Avenue, Gedling, Nottingham, NG4 4GH

Guide Price £210,000

About This Property

GUIDE PRICE £210,000 - £220,000 This extended semi-detached home is now available to purchase and has been recently repainted to neutral throughout, making it ready for you to move in and personalise! Conveniently situated within easy reach of Gedling, Carlton and Mapperley's amenities, the area boasts a variety of nearby schools and sits a short walk from frequent bus services to provide easy access to Nottingham City Centre and the surrounding areas.

Upon entering, you are greeted by an initial hallway that leads into a bright and spacious lounge which features an electric fire. The fitted kitchen is equipped with a range of units, offering ample space for a freestanding cooker, washing machine, tumble dryer and fridge/freezer. From the kitchen, you have access to a downstairs WC and a useful understairs storage area.

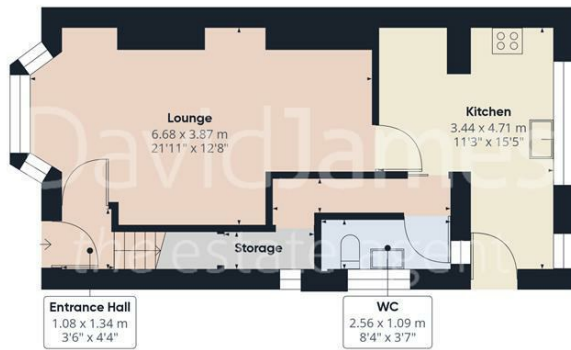
The first floor hosts two bedrooms, both with fitted wardrobes, providing plenty of storage space. The complementing bathroom is then fitted with a three-piece white suite, including an over-bath electric shower and has newly laid flooring alongside the benefit of an additional neighbouring WC. Additionally, there is a useful carpeted loft space with power, lighting and Velux-style windows.

Outside, the property features a generous lawned rear garden with an initial patio seating area whilst timber sheds provides additional storage space for garden tools and equipment. The driveway at the front of the house offers convenient off-street parking.

- Extended semi-detached home
- Within easy reach of Gedling, Carlton and Mapperley's amenities
- A variety of schools and frequent bus services to the City Centre available nearby
- Bright and spacious lounge with a feature electric fire
- Fitted kitchen with space for freestanding appliances
- Two first floor bedrooms (both with fitted wardrobes)
- Carpeted loft space with power and lighting
- Family bathroom with a three-piece suite and an electric shower
- Generous lawned garden with an initial patio seating area
- Driveway to the front provides off-street parking



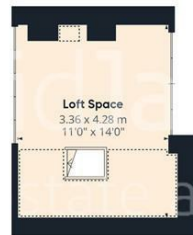




Floor 0



Floor 1



Floor 2



Approximate total area*
91.3 m²
982.77 ft²

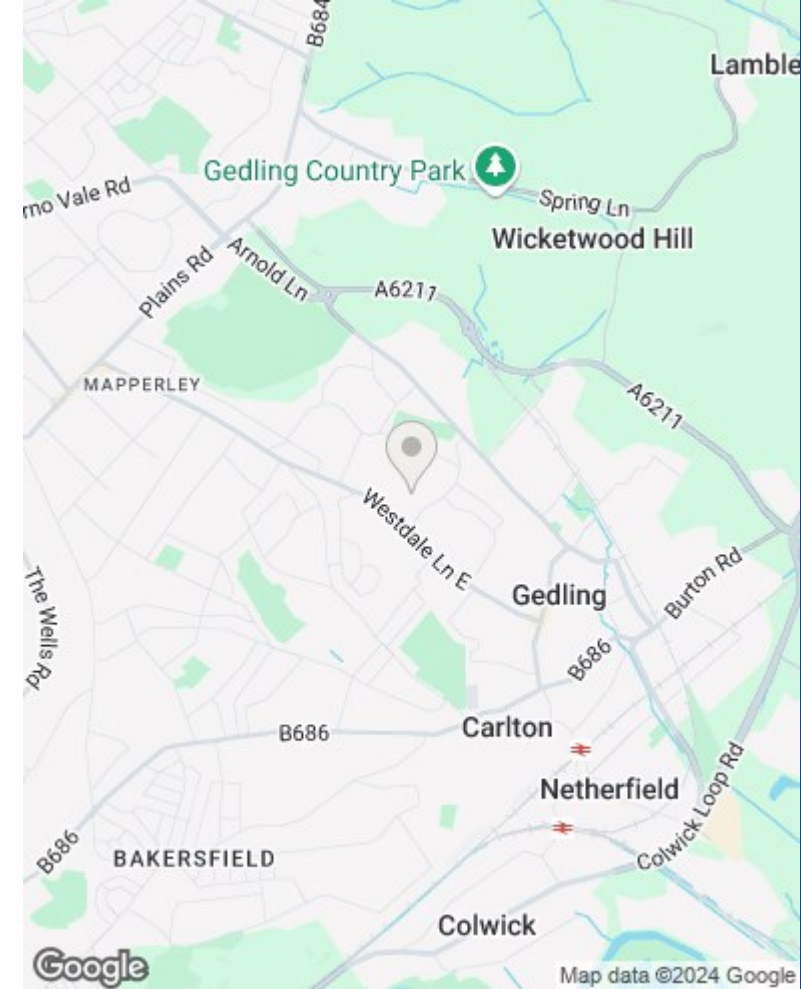
Reduced headroom
4.88 m²
52.52 ft²

(†) Excluding balconies and terraces

Reduced headroom
(below 1.5m/4.92ft)

While every attempt has been made to ensure accuracy, all measurements are approximate, not to scale. This floor plan is for illustrative purposes only.

GIRAFFE360



These particulars are produced in good faith, are set out as a general guide only and do not constitute any part of a contract. No person in the employment of David James Estate Agents Ltd has any authority to make any representation whatsoever in relation to the property. All services, together with electrical fittings or fitted appliances have NOT been tested. All the measurements given in the details are approximate. Floor plans are for illustrative purposes only and are not drawn to scale. The position and size of doors, windows, appliances and other features are approximate only. The photographs of this property have been taken with a 10mm wide-angle lens. No responsibility can be accepted for any loss or expense incurred in viewing. If you have a property to sell you may wish to take advantage of our free valuation service. David James Estate Agents have established professional relationships with third-party suppliers for the provision of services to Clients. As remuneration for this professional relationship, the agent receives referral commission from the third-party company. David James Estate Agents receives the following commission from each third party supplier on a per referral basis: W A Barnes Ltd: £60 including VAT. All Moves UK Ltd: 18% including VAT of the invoice total (£107 including VAT average). MoveWithUs Limited: £188 including VAT (average).

Council Tax Band: B
Gedling Borough Council
Freehold

DavidJames
the estate agent

David James Estate Agents
45b Plains Road, Nottingham, NG3 5JU
t: 0115 962 4213 e: mapperley@david-james.com

