



2



1



1



D

DavidJames
the estate agent

Salisbury Court, Querneby Road, Mapperley, Nottingham, NG3 5JD

Guide Price £100,000

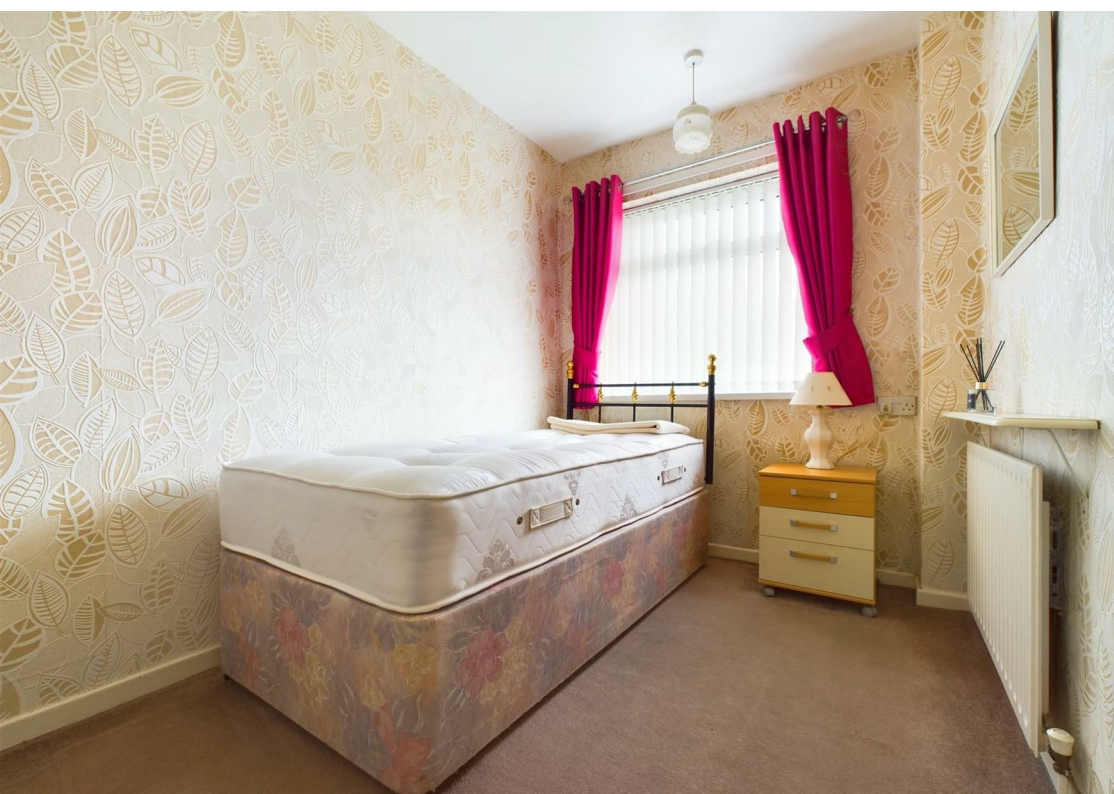
About This Property

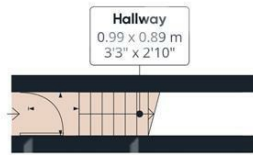
Nestled in the heart of Mapperley, this first-floor maisonette presents an opportunity for comfortable living. Boasting two bedrooms, an entrance hall, and a central first-floor landing, this home offers a practical layout. The lounge has a glazed door leading to a balcony overlooking Querneby Road and invites plenty of natural light. The kitchen features traditional Oak panelled finish units, tiled flooring, and integrated oven and hob, and there is a fully tiled bathroom/WC with a white suite and electric shower. The property benefits from combination gas central heating and UPVC double glazing. Outside, an allocated garden area to the rear elevation and a garage in a communal block add further convenience. Situated within walking distance of a supermarket and bus routes to the city centre and surrounding areas, this property offers convenience. Sold with no upward chain, seize the opportunity to make this Mapperley maisonette your new home or investment.



- First floor maisonette
- Two bedrooms
- Entrance hall and central first floor landing
- Lounge with glazed door to a balcony overlooking Querneby Road
- Kitchen with traditional Oak panelled finish units, tiled flooring, storage cupboard and integrated oven and hob
- Fully tiled bathroom /Wc with white suite and electric shower
- Combination gas central heating, UPVC double glazing
- Allocated garden area to the rear elevation, garage situated in a communal block
- In walking distance of a supermarket and bus routes to the city centre and surrounding areas
- Sold with no upward chain







Floor 0



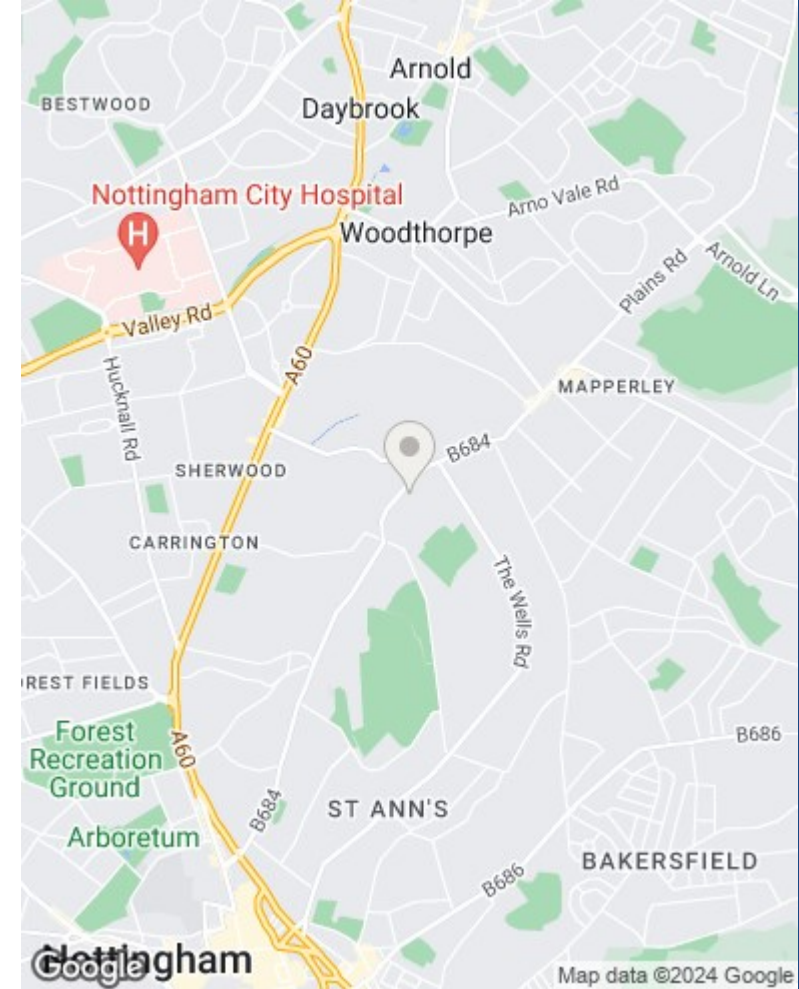
Floor 1

Approximate total area**
61.68 m²
663.89 ft²

(*) Excluding balconies and terraces

While every attempt has been made to ensure accuracy, all measurements are approximate, not to scale. This floor plan is for illustrative purposes only.

GIRAFFE360



These particulars are produced in good faith, are set out as a general guide only and do not constitute any part of a contract. No person in the employment of David James Estate Agents Ltd has any authority to make any representation whatsoever in relation to the property. All services, together with electrical fittings or fitted appliances have NOT been tested. All the measurements given in the details are approximate. Floor plans are for illustrative purposes only and are not drawn to scale. The position and size of doors, windows, appliances and other features are approximate only. The photographs of this property have been taken with a 10mm wide-angle lens. No responsibility can be accepted for any loss or expense incurred in viewing. If you have a property to sell you may wish to take advantage of our free valuation service. David James Estate Agents have established professional relationships with third-party suppliers for the provision of services to Clients. As remuneration for this professional relationship, the agent receives referral commission from the third-party company. David James Estate Agents receives the following commission from each third party supplier on a per referral basis: W A Barnes Ltd: £60 including VAT. All Moves UK Ltd: 18% including VAT of the invoice total (£107 including VAT average). MoveWithUs Limited: £188 including VAT (average).

Council Tax Band: A
Nottingham City Council
Leasehold