



2



2



1



E

DavidJames
the estate agent

Blyth Street, Mapperley, Nottingham, NG3 5HP

Guide Price £170,000

About This Property

We are pleased to present this end-terrace house which is perfect for first time buyers or investors and can be available with a tenant in-situ, ensuring immediate income for the new owner. This property is presented to the market with no upward chain and offers a straightforward purchase process!

Located within a convenient distance of Mapperley's superb range of amenities, the residence ensures essentials are always within easy reach. For those commuting to Nottingham City Centre, frequent bus services are available just a short walk from the door.

The interior features a bright and spacious lounge, complete with a feature fireplace. Adjacent to this, a separate dining room provides a perfect area for meals and gatherings, with open access leading directly into the fitted kitchen which has a range of freestanding appliances.

Upstairs, two double bedrooms offer ample space for rest. The complementing bathroom is then equipped with a three-piece white suite.

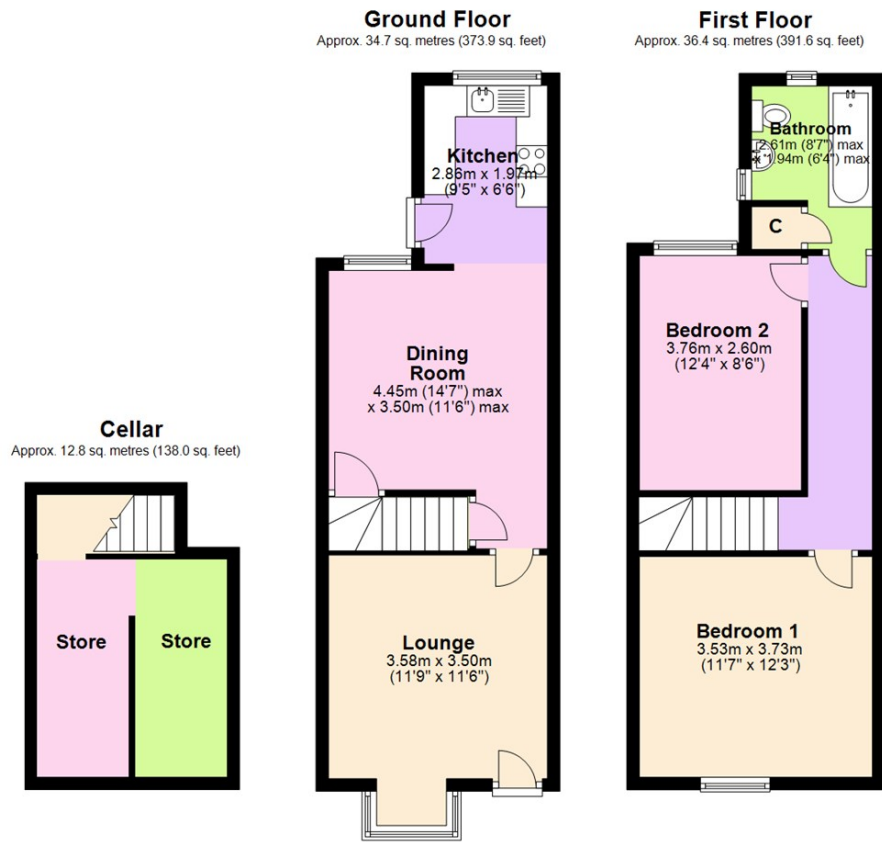
Outside, a low-maintenance rear yard provides a private outdoor space without the burden of extensive upkeep.

A viewing is highly recommended to fully appreciate the convenience offered by this inviting home!

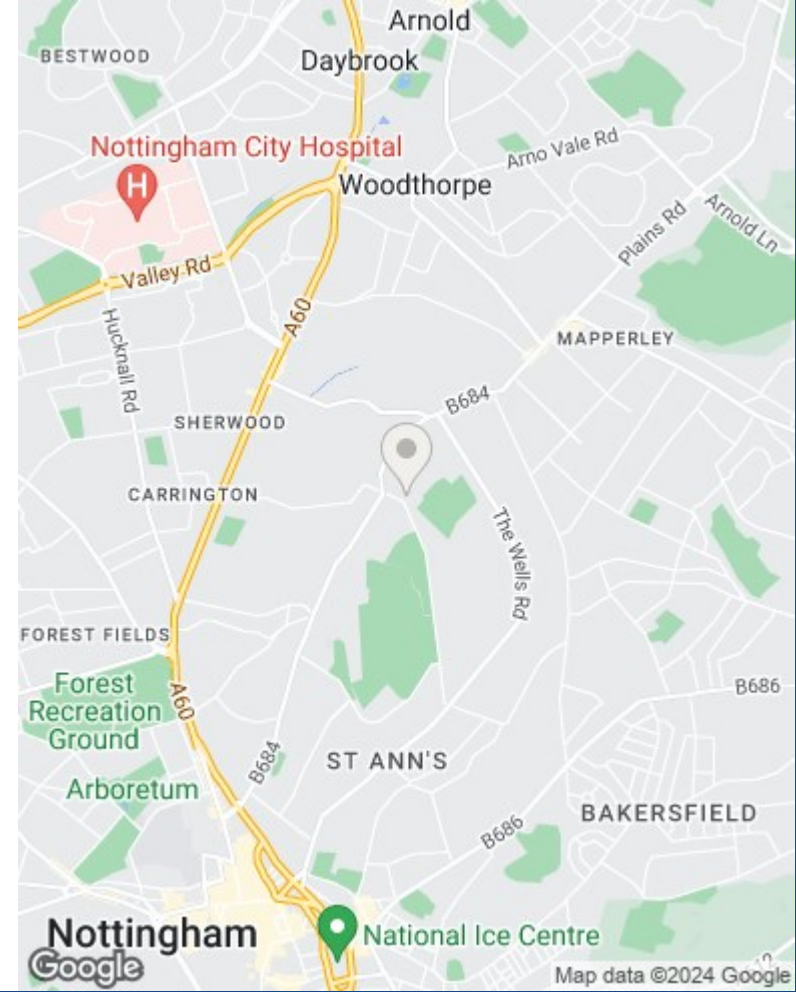


- End terraced house
- Option to purchase with tenant in situ
- Well-presented throughout
- Within easy reach of Mapperley's amenities and Nottingham City Centre
- Bright and spacious lounge
- Separate dining room
- Fitted kitchen with freestanding appliances
- Two double bedrooms
- Bathroom with a three-piece white suite
- Low-maintenance rear yard





Total area: approx. 83.9 sq. metres (903.5 sq. feet)



These particulars are produced in good faith, are set out as a general guide only and do not constitute any part of a contract. No person in the employment of David James Estate Agents Ltd has any authority to make any representation whatsoever in relation to the property. All services, together with electrical fittings or fitted appliances have NOT been tested. All the measurements given in the details are approximate. Floor plans are for illustrative purposes only and are not drawn to scale. The position and size of doors, windows, appliances and other features are approximate only. The photographs of this property have been taken with a 10mm wide-angle lens. No responsibility can be accepted for any loss or expense incurred in viewing. If you have a property to sell you may wish to take advantage of our free valuation service. David James Estate Agents have established professional relationships with third-party suppliers for the provision of services to Clients. As remuneration for this professional relationship, the agent receives referral commission from the third-party company. David James Estate Agents receives the following commission from each third party supplier on a per referral basis: W A Barnes Ltd: £60 including VAT. All Moves UK Ltd: 18% including VAT of the invoice total (£107 including VAT average). MoveWithUs Limited: £188 including VAT (average).

Council Tax Band: A
Nottingham City
Freehold

DavidJames
the estate agent

David James Estate Agents
45b Plains Road, Nottingham, NG3 5JU
t: 0115 962 4213 e: mapperley@david-james.com

