



2



2



1



D

DavidJames
the estate agent

Springwood Gardens, Woodthorpe, Nottingham, NG5 4HD

Guide Price £300,000

About This Property

Immerse yourself in the charm of this spacious detached bungalow, ideally situated in this peaceful part of Woodthorpe, boasting all the comforts of modern living. The property features two well-appointed double bedrooms, each complete with fitted wardrobes. The property welcomes you with an entrance porch that leads into a central entrance hall. The lounge is flooded with natural light from the picture window and enhanced by the warmth of a gas fire set within a fireplace. There is also a separate dining room adjacent to the kitchen. Bedroom two opens into a UPVC conservatory with tilt and slide patio doors and tiled flooring—a perfect spot for enjoying the morning sun or indulging in leisurely afternoons. The breakfast kitchen offers a suite of units, a sociable breakfast bar, and an integrated oven and hob. The fully tiled bathroom features a white suite and a shower off mixer taps. There is combination gas central heating and UPVC double glazing as well as an alarm system. Outside, a tarmac driveway offers generous off-road parking and leads to a garage with an electric door, while the enclosed rear garden has a lawn flanked by established borders.



David James
the estate agent

- Spacious detached bungalow
- Two double bedrooms, both with fitted wardrobes
- Entrance porch and central entrance hall
- Lounge with picture window to the front elevation and gas fire set to a fireplace, separate dining room
- UPVC conservatory (accessed from bedroom two) with tilt and slide patio doors and tiled flooring
- Breakfast kitchen with a range of units, breakfast bar and integrated oven and hob
- Fully tiled bathroom/Wc with white suite and shower off mixer taps
- Combination gas central heating, UPVC double glazing, alarm system
- Tarmac driveway provides off road parking, garage with electric door
- Enclosed lawned rear garden with established borders



David James

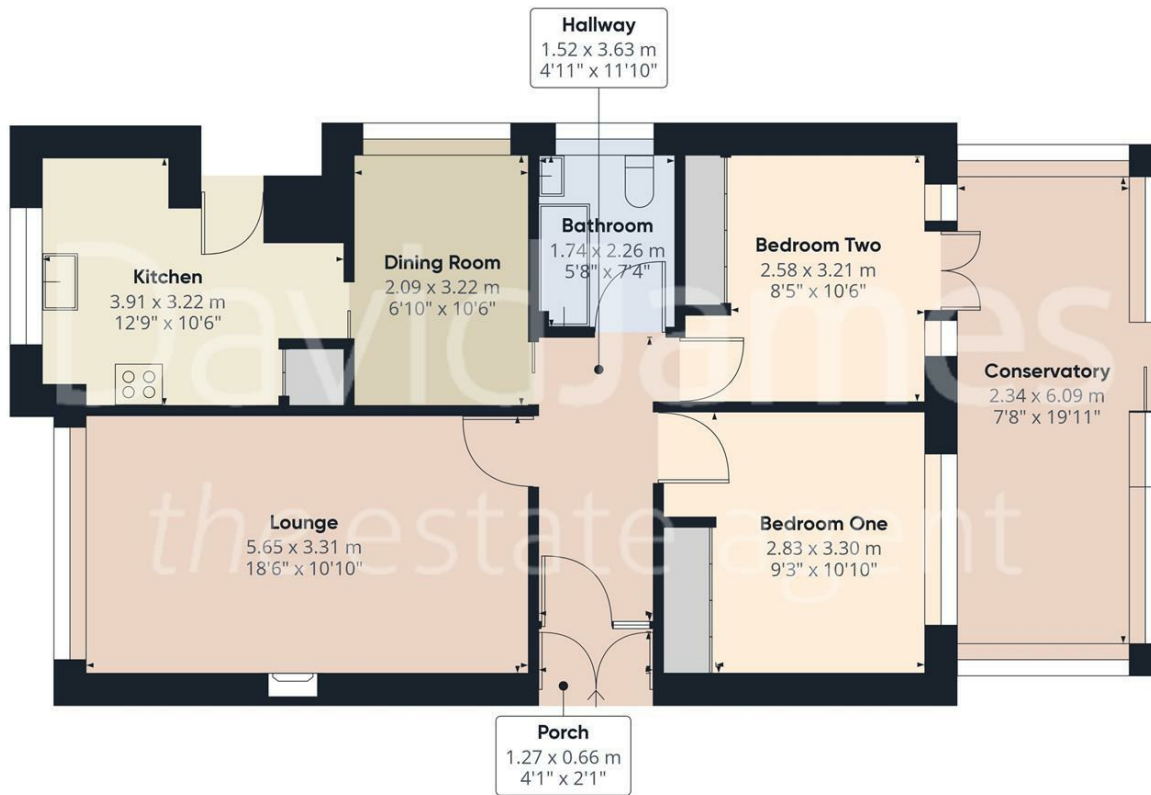


DavidJames
the estate agent

DavidJames
the estate agent

DavidJames
the estate agent

DavidJames
the estate agent

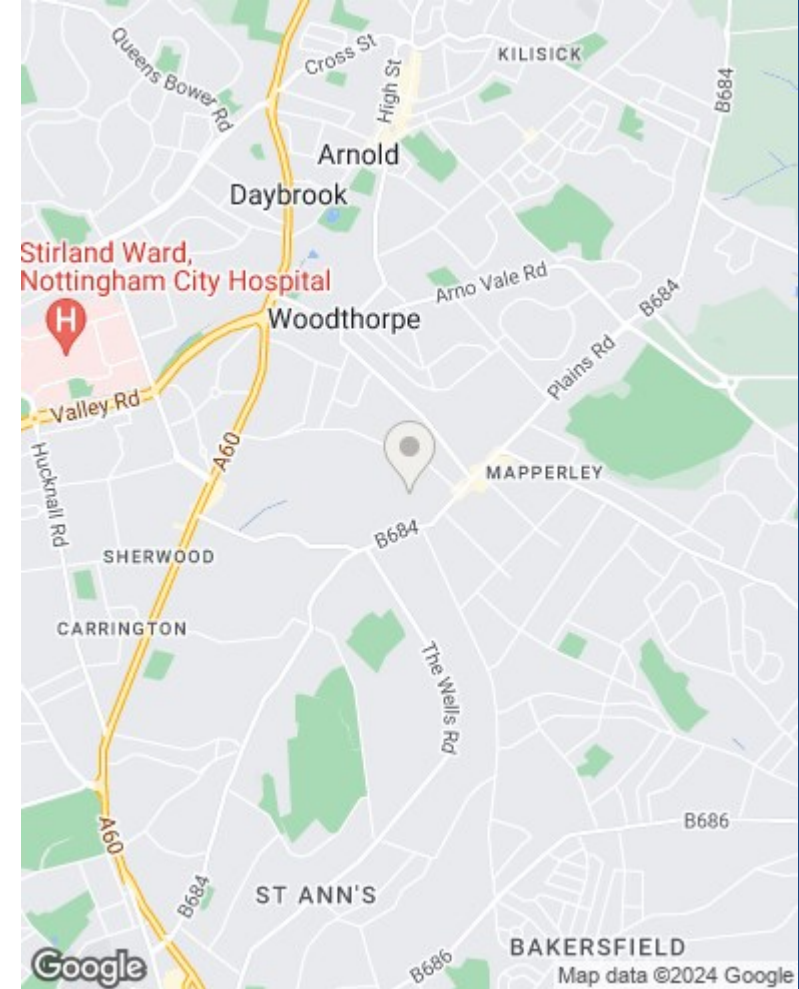


Approximate total area**
85.73 m²
922.75 ft²

(*) Excluding balconies and terraces

While every attempt has been made to ensure accuracy, all measurements are approximate, not to scale. This floor plan is for illustrative purposes only.

GIRAFFE360



These particulars are produced in good faith, are set out as a general guide only and do not constitute any part of a contract. No person in the employment of David James Estate Agents Ltd has any authority to make any representation whatsoever in relation to the property. All services, together with electrical fittings or fitted appliances have NOT been tested. All the measurements given in the details are approximate. Floor plans are for illustrative purposes only and are not drawn to scale. The position and size of doors, windows, appliances and other features are approximate only. The photographs of this property have been taken with a 10mm wide-angle lens. No responsibility can be accepted for any loss or expense incurred in viewing. If you have a property to sell you may wish to take advantage of our free valuation service. David James Estate Agents have established professional relationships with third-party suppliers for the provision of services to Clients. As remuneration for this professional relationship, the agent receives referral commission from the third-party company. David James Estate Agents receives the following commission from each third party supplier on a per referral basis: W A Barnes Ltd: £60 including VAT. All Moves UK Ltd: 18% including VAT of the invoice total (£107 including VAT average). MoveWithUs Limited: £188 including VAT (average).

Council Tax Band: C
Nottingham City Council
Freehold

DavidJames
the estate agent

David James Estate Agents
45b Plains Road, Nottingham, NG3 5JU
t: 0115 962 4213 e: mapperley@david-james.com

