



1



1



1



C

DavidJames
the estate agent

Egerton Road, Woodthorpe, Nottingham, NG5 4BJ

Asking Price £110,000

About This Property

Introducing a modern first-floor apartment which is offered to the market with no upward chain. This property presents an attractive investment opportunity with a tenant currently in place, providing an annual gross yield of 6.75%, calculated based on the asking price.

Alternatively, this property would be perfect for those seeking a convenient location, with the apartment ideally located for access to Sherwood, Mapperley and Arnold's array of amenities. Frequent bus services to the City Centre are available right on the doorstep, ensuring a smooth commute, whilst Nottingham City Hospital also can be found just a short walk away.

Upon entering the compound, residents are greeted by a communal entrance equipped with an intercom system, enhancing security and peace of mind. The private entrance hall within the apartment leads to a thoughtfully designed open plan living space which integrates a modern fitted kitchen and a lounge/dining area.

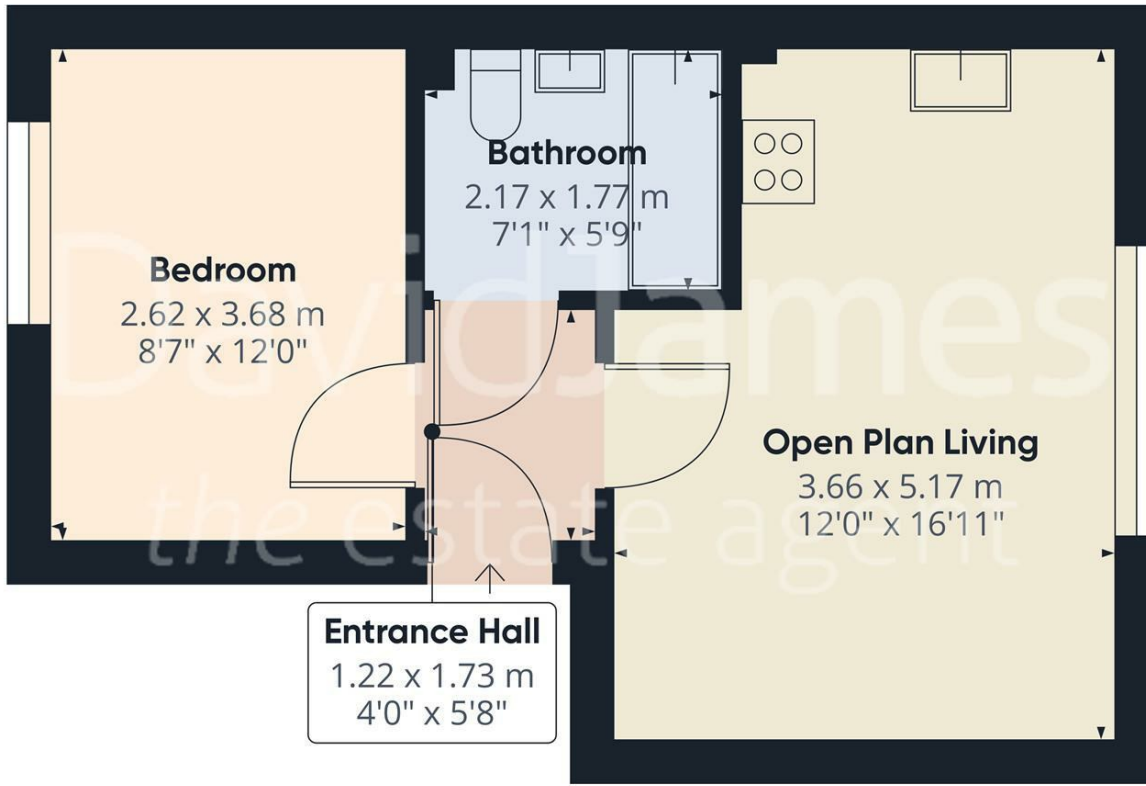
A comfortable double bedroom is complemented by the bathroom which is equipped with a three-piece white suite. Comfort is further ensured by gas central heating throughout.

Externally, the apartment benefits from an allocated car parking space, set within the communal grounds.



- Modern first floor apartment
- Tenant currently in-situ providing a 6.75% gross yield
- Offered to the market with no upward chain
- Within easy reach of excellent local amenities
- Frequent bus services on the doorstep
- Walking distance from Nottingham City Hospital
- Open plan living area with a modern fitted kitchen
- One double bedroom
- Bathroom with three-piece suite
- Allocated car parking space



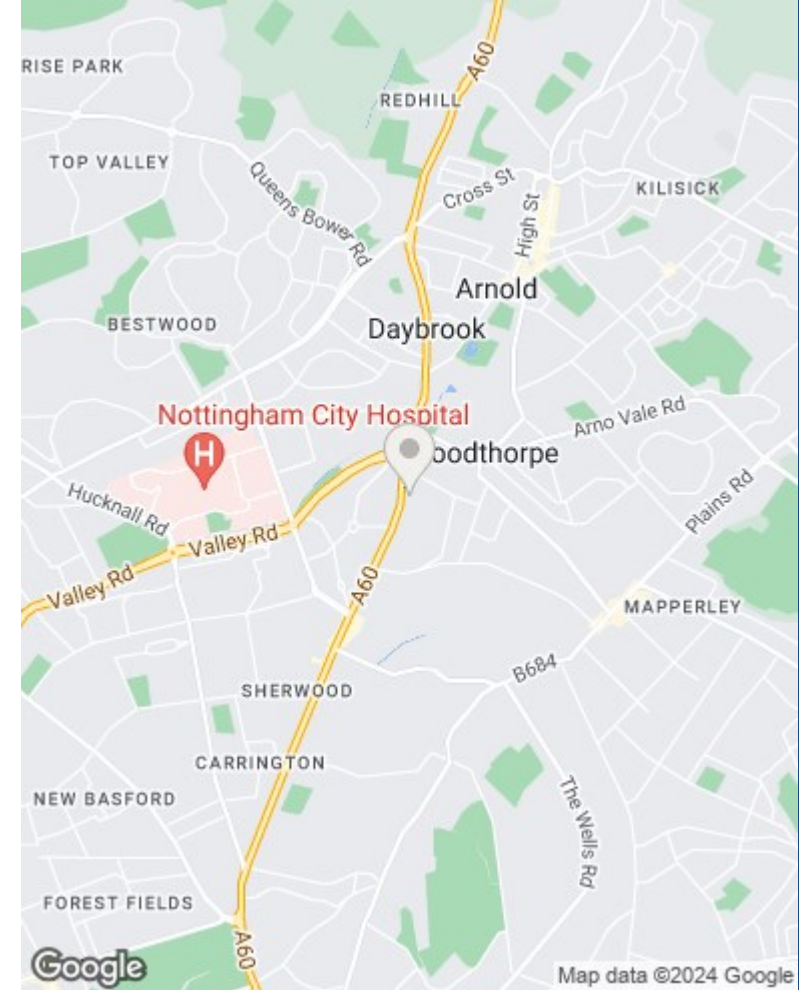


Approximate total area*
34.14 m²
367.45 ft²

(*) Excluding balconies and terraces

While every attempt has been made to ensure accuracy, all measurements are approximate, not to scale. This floor plan is for illustrative purposes only.

GIRAFFE360



These particulars are produced in good faith, are set out as a general guide only and do not constitute any part of a contract. No person in the employment of David James Estate Agents Ltd has any authority to make any representation whatsoever in relation to the property. All services, together with electrical fittings or fitted appliances have NOT been tested. All the measurements given in the details are approximate. Floor plans are for illustrative purposes only and are not drawn to scale. The position and size of doors, windows, appliances and other features are approximate only. The photographs of this property have been taken with a 10mm wide-angle lens. No responsibility can be accepted for any loss or expense incurred in viewing. If you have a property to sell you may wish to take advantage of our free valuation service. David James Estate Agents have established professional relationships with third-party suppliers for the provision of services to Clients. As remuneration for this professional relationship, the agent receives referral commission from the third-party company. David James Estate Agents receives the following commission from each third party supplier on a per referral basis: W A Barnes Ltd: £60 including VAT. All Moves UK Ltd: 18% including VAT of the invoice total (£107 including VAT average). MoveWithUs Limited: £188 including VAT (average).

Council Tax Band: B
Gedling Borough Council
Leasehold

DavidJames
the estate agent

David James Estate Agents
45b Plains Road, Nottingham, NG3 5JU
t: 0115 962 4213 e: mapperley@david-james.com

