



DavidJames
the estate agent

Thackerays Lane, Woodthorpe, Nottingham, NG5 4HU

Guide Price £325,000

About This Property

This traditional extended detached house is ideally situated in the sought-after Woodthorpe, a short stroll away from Arnot Hill Park and within close proximity of the excellent amenities that both Mapperley and Arnold have to offer. The area is well-served by highly regarded schools and offers frequent bus services to Nottingham City Centre, making it an enviable location for families and professionals alike!

The property welcomes you with a charming entrance hall, featuring an original door and stained-glass windows for a touch of character. The lounge, complete with a feature bay window and a gas fire, alongside original flooring, creates a cozy space for relaxation. A separate dining room offers flexibility for various uses, maintaining the charm also with its original flooring. The breakfast kitchen is well-appointed with integrated appliances including an oven, hob and dishwasher, plus space for additional freestanding appliances.

The house is further enhanced by gas central heating powered by a Worcester boiler and benefits from a cellar providing ample storage space with power and lighting.

Upstairs, three bedrooms are complemented by a bathroom featuring a cast-iron bath and shower cubicle, alongside a separate WC.

The exterior does not disappoint with a generous, well-maintained garden that boasts planting beds, a variety of patio seating areas, a timber shed and a greenhouse for gardening enthusiasts.

Additionally, a driveway at the front of the property ensures convenient off-street parking.

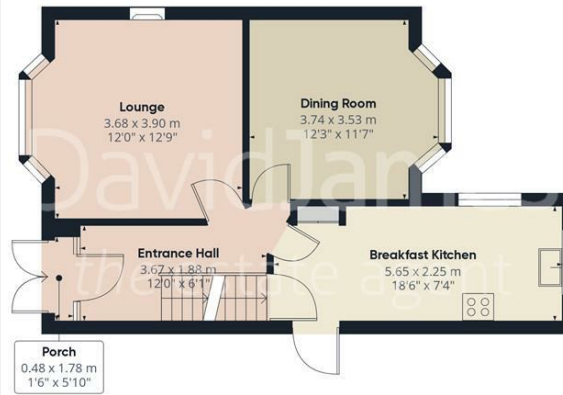
- Traditional detached home
- Highly sought after location
- A short walk from schools, bus services and Arnot Hill Park
- Welcoming entrance hall with original features
- Spacious lounge and separate dining room with original flooring
- Breakfast kitchen with integrated oven, hob and dishwasher
- Three bedrooms
- Bathroom with cast-iron bath, shower cubicle and separate WC
- Fantastic established garden with a variety of patio areas
- Driveway providing off-street parking







Floor -1



Floor 0



Floor 1



Approximate total area⁽¹⁾
 107.86 m²
 1161.01 ft²

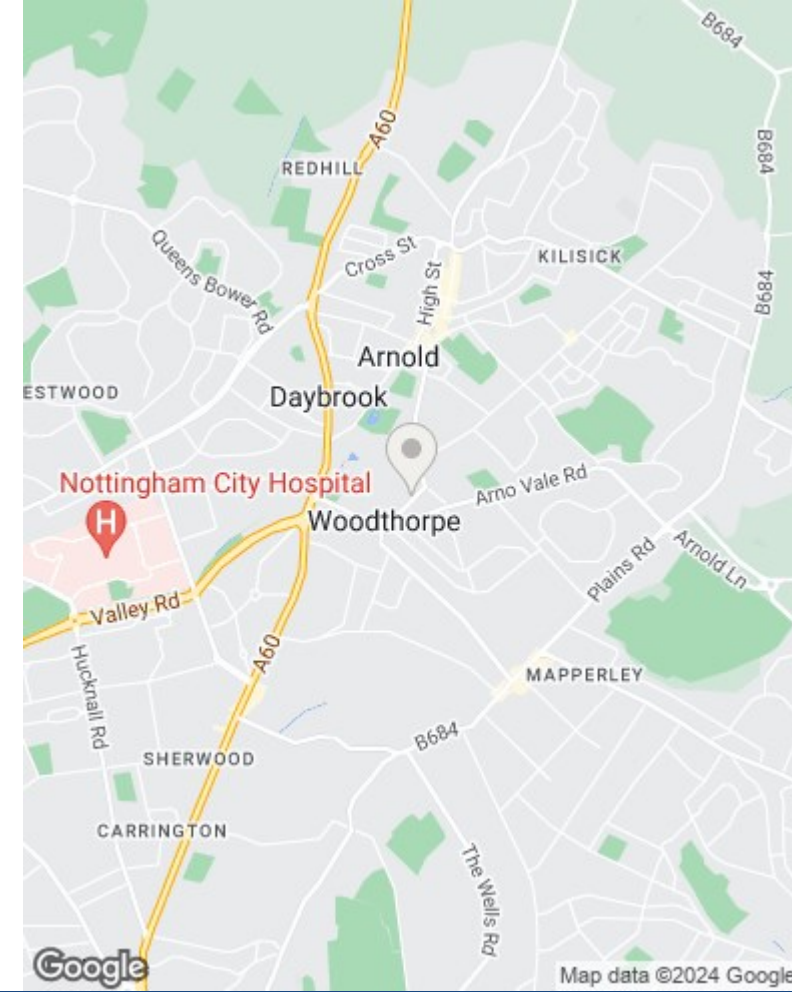
Reduced headroom
 1.2 m²
 12.86 ft²

(1) Excluding balconies and terraces

Reduced headroom
 (below 1.5m/4.92ft)

While every attempt has been made to ensure accuracy, all measurements are approximate, not to scale. This floor plan is for illustrative purposes only.

GIRAFFE360



These particulars are produced in good faith, are set out as a general guide only and do not constitute any part of a contract. No person in the employment of David James Estate Agents Ltd has any authority to make any representation whatsoever in relation to the property. All services, together with electrical fittings or fitted appliances have NOT been tested. All the measurements given in the details are approximate. Floor plans are for illustrative purposes only and are not drawn to scale. The position and size of doors, windows, appliances and other features are approximate only. The photographs of this property have been taken with a 10mm wide-angle lens. No responsibility can be accepted for any loss or expense incurred in viewing. If you have a property to sell you may wish to take advantage of our free valuation service. David James Estate Agents have established professional relationships with third-party suppliers for the provision of services to Clients. As remuneration for this professional relationship, the agent receives referral commission from the third-party company. David James Estate Agents receives the following commission from each third party supplier on a per referral basis: W A Barnes Ltd: £60 including VAT. All Moves UK Ltd: 18% including VAT of the invoice total (£107 including VAT average). MoveWithUs Limited: £188 including VAT (average).

Council Tax Band: C
Gedling Borough Council
Freehold

DavidJames
 the estate agent

David James Estate Agents
 45b Plains Road, Nottingham, NG3 5JU
 t: 0115 962 4213 e: mapperley@david-james.com

