



 2

 1

 1

 D

DavidJames
the estate agent

Mickleborough Avenue, Mapperley, Nottingham, NG3 3EL

Guide Price £150,000

About This Property

This mid-townhouse presents a wonderful opportunity for first-time buyers or investors and is offered to the market with no upward chain. Located within reach of Mapperley's amenities, this property also benefits from nearby frequent transport links to Nottingham City Centre, making it perfectly positioned for commuting.

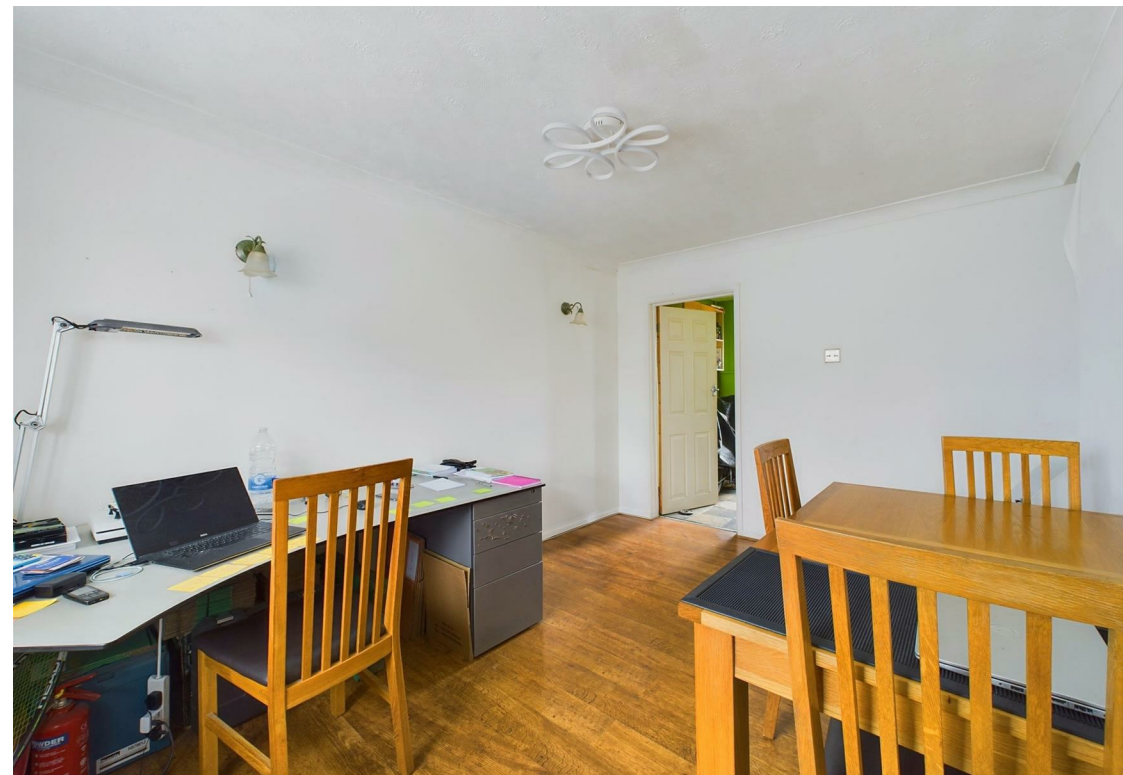
The interior features a good-sized lounge which leads to a fitted kitchen, equipped with an integrated oven, hob and extractor along with additional space for freestanding appliances.

The residence accommodates two bedrooms, with the main bedroom boasting in-built wardrobes for ample storage. A bathroom with a three-piece suite completes the layout.

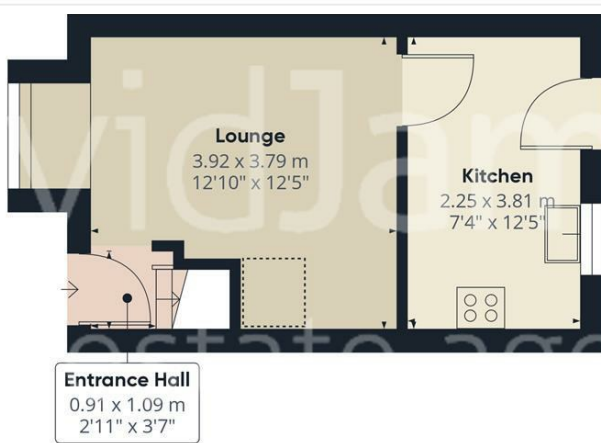
Externally, the property offers an enclosed rear garden, providing a private outdoor area. Additionally, the convenience of an off-street parking space completes this home.



- Mid-townhouse
- Offered to the market with no upward chain
- An ideal first-time purchase or investment buy
- Nearby transport links to Nottingham City Centre
- Good-sized lounge
- Fitted kitchen with integrated oven, hob and extractor
- Two bedrooms
- Bathroom with three-piece suite
- Enclosed rear garden
- Off-street parking space to the front







Floor 0



Floor 1



Approximate total area*

45.72 m²
492.13 ft²

Reduced headroom

0.76 m²
8.19 ft²

(*) Excluding balconies and terraces

⚠ Reduced headroom
(below 1.5m/4.92ft)

While every attempt has been made to ensure accuracy, all measurements are approximate, not to scale. This floor plan is for illustrative purposes only.

GIRAFFE360



These particulars are produced in good faith, are set out as a general guide only and do not constitute any part of a contract. No person in the employment of David James Estate Agents Ltd has any authority to make any representation whatsoever in relation to the property. All services, together with electrical fittings or fitted appliances have NOT been tested. All the measurements given in the details are approximate. Floor plans are for illustrative purposes only and are not drawn to scale. The position and size of doors, windows, appliances and other features are approximate only. The photographs of this property have been taken with a 10mm wide-angle lens. No responsibility can be accepted for any loss or expense incurred in viewing. If you have a property to sell you may wish to take advantage of our free valuation service. David James Estate Agents have established professional relationships with third-party suppliers for the provision of services to Clients. As remuneration for this professional relationship, the agent receives referral commission from the third-party company. David James Estate Agents receives the following commission from each third party supplier on a per referral basis: W A Barnes Ltd: £60 including VAT. All Moves UK Ltd: 18% including VAT of the invoice total (£107 including VAT average). MoveWithUs Limited: £188 including VAT (average).

Council Tax Band: A
Nottingham City Council
Freehold

DavidJames
the estate agent

David James Estate Agents
45b Plains Road, Nottingham, NG3 5JU
t: 0115 962 4213 e: mapperley@david-james.com

