



3



1



1



D

DavidJames
the estate agent

Longbeck Avenue, Mapperley, Nottingham, NG3 6LT

Asking Price £230,000

About This Property

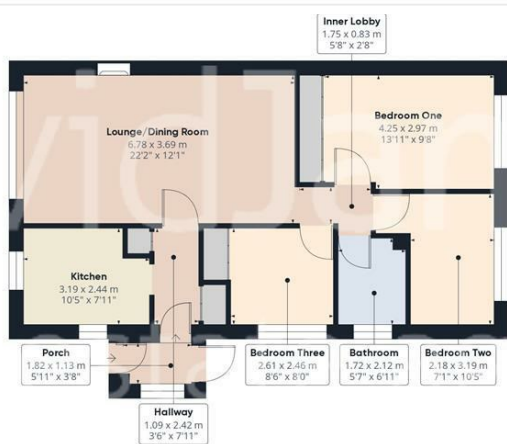
£230,000. This detached bungalow offers a comfortable living space without the hassle of an upward chain. Boasting three bedrooms, with the master and third bedroom featuring convenient built-in wardrobes, this home is as functional as it is inviting. The entrance porch ushers you into a hallway, complete with storage options to keep your space uncluttered. The heart of the home is the lounge/dining room, illuminated by a large window with extended views and warmed by a cozy gas fire, set in a fireplace. The kitchen, equipped with an integrated double oven and hob, benefits from light streaming through windows on two sides. There is a bathroom with a shower off mixer taps as well as gas central heating and UPVC double glazing. Outside, the property reveals a generous lawned rear garden, complemented by a block paved patio. There is a tandem block paved driveway and garage, secured with an electric roller door. Notably, the home enjoys elevated views across the city centre from the front.



- Detached bungalow sold with no upward chain
- Three bedrooms, bedrooms one and three with built in wardrobes
- Entrance porch and hallway with storage cupboards
- Lounge/dining room with window having extended views and a fireplace with gas fire
- Kitchen with integrated double oven and hob and windows to two elevations
- Bathroom/Wc with shower off mixer taps
- Gas central heating, UPVC double glazing
- Good sized lawned rear garden with block paved patio area
- Tandem block paved driveway provides off road parking, garage with electric roller door
- Views to the front elevation across the city centre







Floor 0 Building 1



Floor 0 Building 2

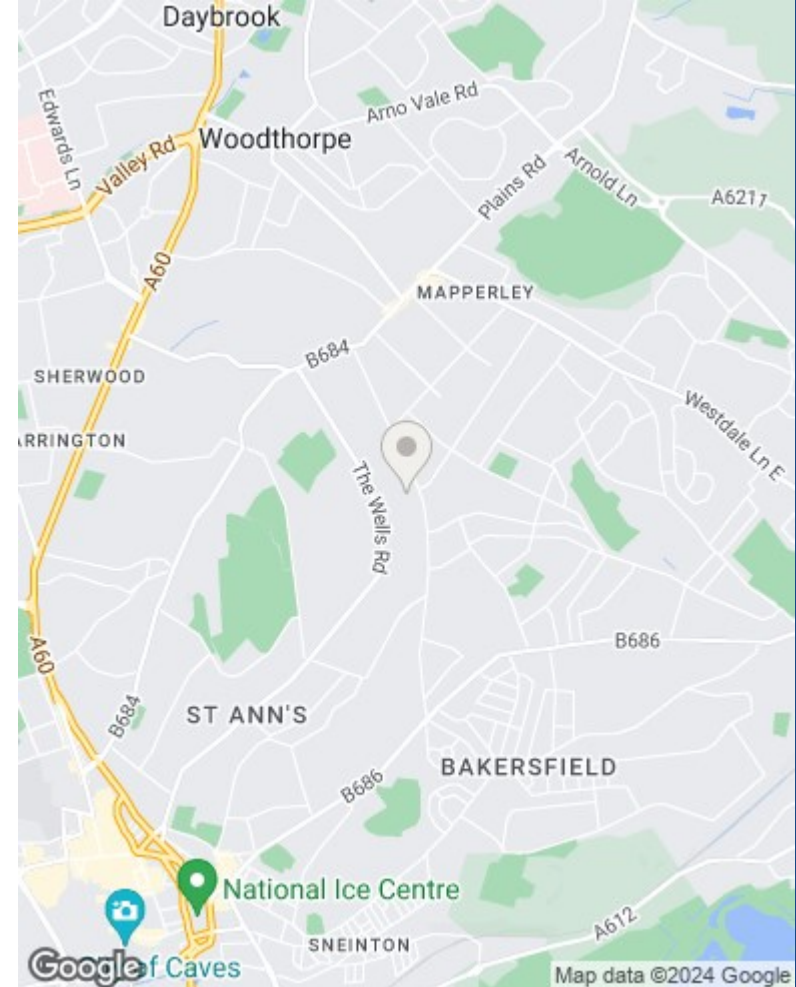
DavidJames
the estate agent

Approximate total area^(*)
86.2 m²
927.8 ft²

(*) Excluding balconies and terraces

While every attempt has been made to ensure accuracy, all measurements are approximate, not to scale. This floor plan is for illustrative purposes only.

GIRAFFE360



These particulars are produced in good faith, are set out as a general guide only and do not constitute any part of a contract. No person in the employment of David James Estate Agents Ltd has any authority to make any representation whatsoever in relation to the property. All services, together with electrical fittings or fitted appliances have NOT been tested. All the measurements given in the details are approximate. Floor plans are for illustrative purposes only and are not drawn to scale. The position and size of doors, windows, appliances and other features are approximate only. The photographs of this property have been taken with a 10mm wide-angle lens. No responsibility can be accepted for any loss or expense incurred in viewing. If you have a property to sell you may wish to take advantage of our free valuation service. David James Estate Agents have established professional relationships with third-party suppliers for the provision of services to Clients. As remuneration for this professional relationship, the agent receives referral commission from the third-party company. David James Estate Agents receives the following commission from each third party supplier on a per referral basis: W A Barnes Ltd: £60 including VAT. All Moves UK Ltd: 18% including VAT of the invoice total (£107 including VAT average). MoveWithUs Limited: £188 including VAT (average).

Council Tax Band: D
Nottingham City Council
Freehold

DavidJames
the estate agent

David James Estate Agents
45b Plains Road, Nottingham, NG3 5JU
t: 0115 962 4213 e: mapperley@david-james.com

naea | propertymark
PROTECTED

The Property Ombudsman