



DavidJames
the estate agent

Hawley Mount, Nottingham, NG5 4EN

Guide Price £180,000

About This Property

GUIDE PRICE £180,000 - £200,000. This detached bungalow presents a unique opportunity for those seeking the convenience of single-storey living, ideally nestled on the border of Woodthorpe, Mapperley, and Sherwood. The property is in a prime position to take full advantage of the excellent local amenities the areas have to offer!

Upon entering, the entrance hall leads to a spacious lounge, featuring a fireplace and views to the front. The fitted kitchen comes complete with an integrated oven and hob, alongside ample space for additional freestanding appliances.

Originally designed as a two-bedroom home, the layout has been thoughtfully adapted, with the second bedroom now serving as a versatile dining room with French doors to the garden. An alternative floor plan is available, showcasing the potential for the new owner to revert to the original two-bedroom setup, if required.

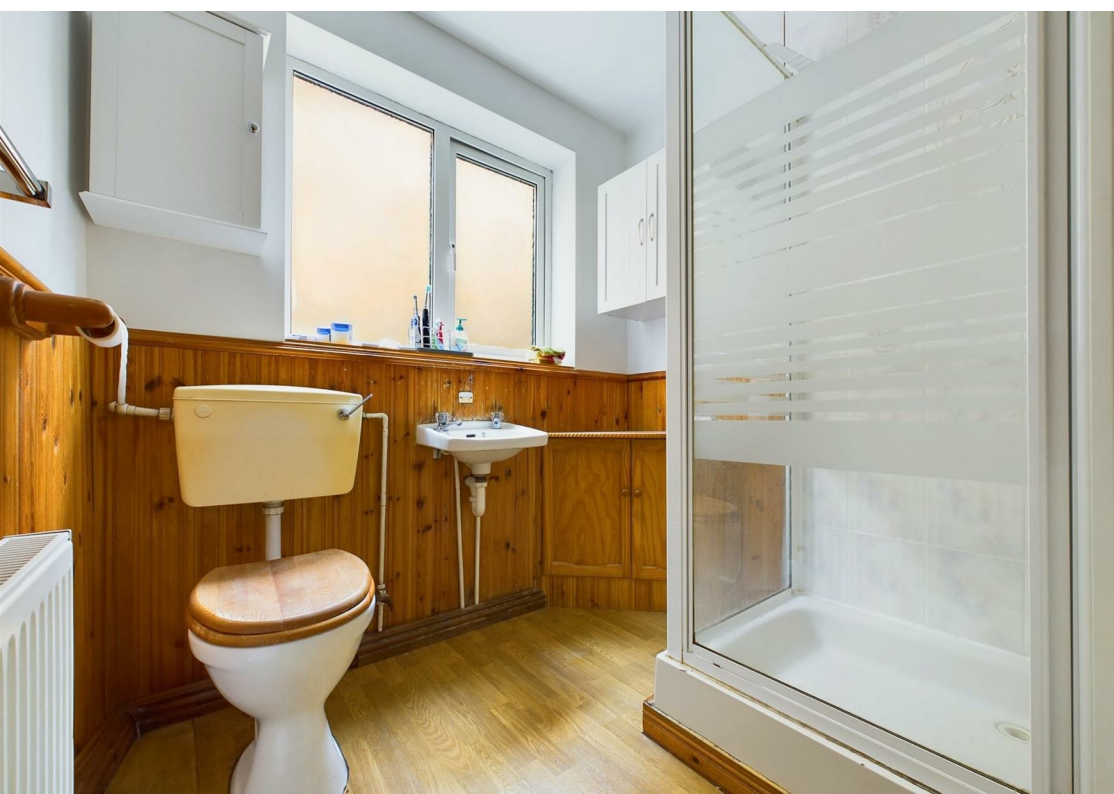
The main bedroom is a double room with fitted wardrobes and cupboards, complemented by a shower room which is equipped with a three-piece suite.

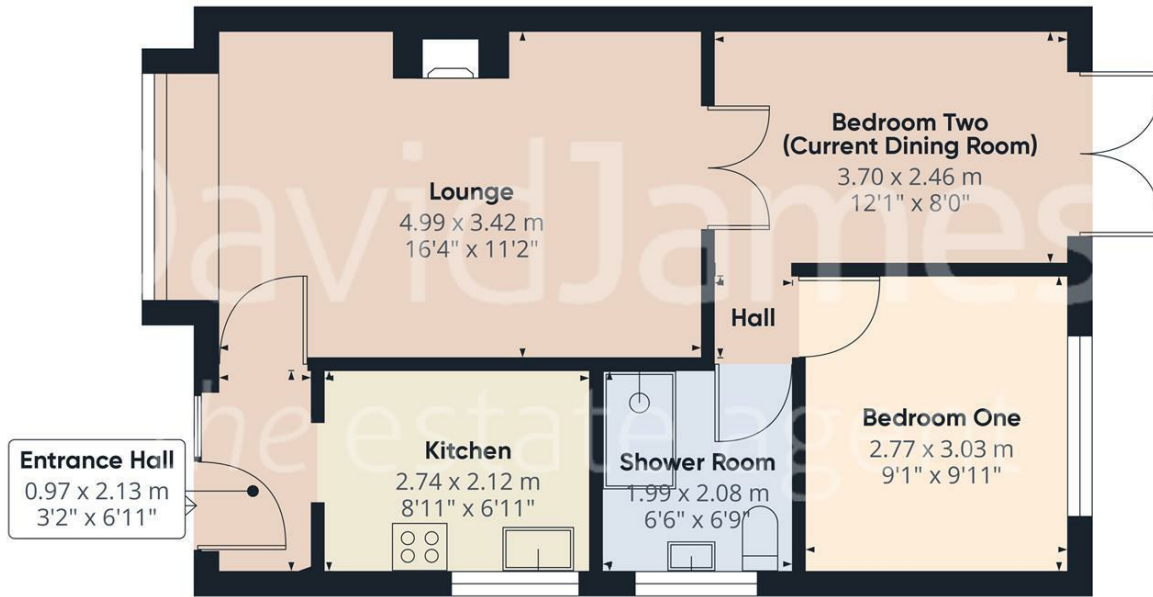
Outside, the property boasts a low-maintenance, south-westerly facing rear garden. The garden offers a patio seating area, a timber shed for extra storage and an external power socket. Additionally, the property includes a useful garage located in a block just a short walk away.



- Detached bungalow
- Nestled on the borders of Woodthorpe, Mapperley and Sherwood
- Ideal for those seeking single-storey living
- Originally two bedrooms (bedroom two/current dining room)
- Spacious lounge with feature fireplace
- Fitted kitchen with integrated oven and hob
- Main bedroom with fitted storage
- Shower room with three-piece suite
- Low-maintenance south-westerly facing garden
- Garage in a block just a short walk away





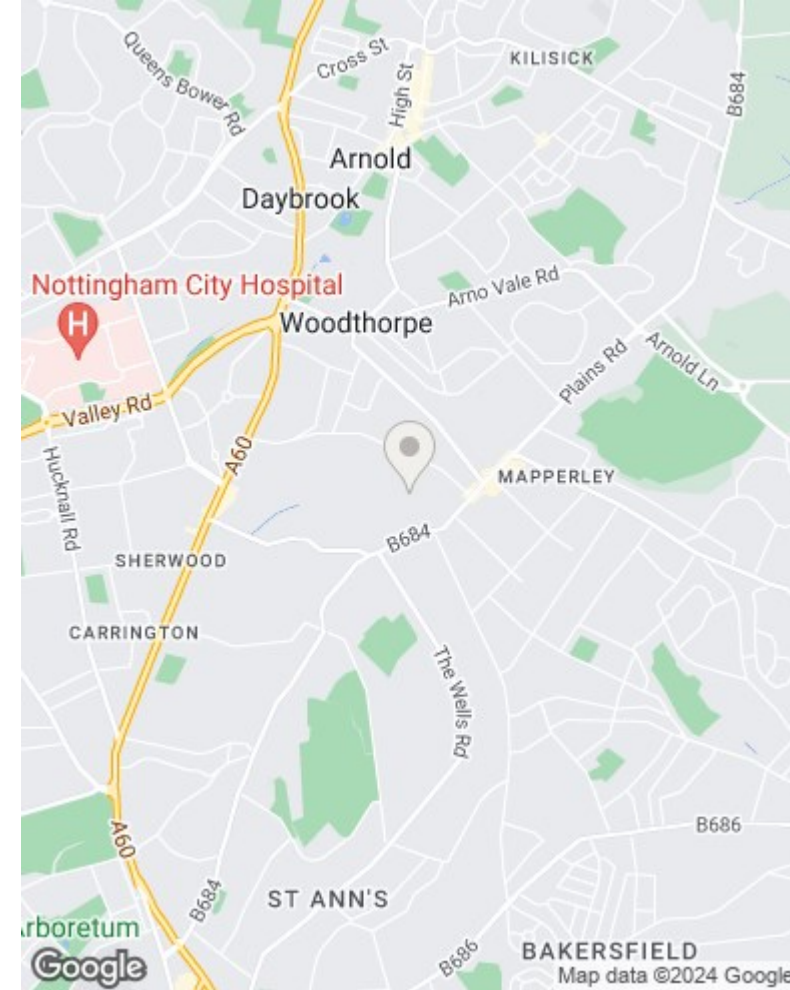


Approximate total area**
49.26 m²
530.24 ft²

(*) Excluding balconies and terraces

While every attempt has been made to ensure accuracy, all measurements are approximate, not to scale. This floor plan is for illustrative purposes only.

GIRAFFE360



These particulars are produced in good faith, are set out as a general guide only and do not constitute any part of a contract. No person in the employment of David James Estate Agents Ltd has any authority to make any representation whatsoever in relation to the property. All services, together with electrical fittings or fitted appliances have NOT been tested. All the measurements given in the details are approximate. Floor plans are for illustrative purposes only and are not drawn to scale. The position and size of doors, windows, appliances and other features are approximate only. The photographs of this property have been taken with a 10mm wide-angle lens. No responsibility can be accepted for any loss or expense incurred in viewing. If you have a property to sell you may wish to take advantage of our free valuation service. David James Estate Agents have established professional relationships with third-party suppliers for the provision of services to Clients. As remuneration for this professional relationship, the agent receives referral commission from the third-party company. David James Estate Agents receives the following commission from each third party supplier on a per referral basis: W A Barnes Ltd: £60 including VAT. All Moves UK Ltd: 18% including VAT of the invoice total (£107 including VAT average). MoveWithUs Limited: £188 including VAT (average).

Council Tax Band: B
Nottingham City Council
Freehold