



2



1



2



C

DavidJames
the estate agent

Pasteur House, Ockbrook Drive, Mapperley, Nottingham, NG3 6AX

Guide Price £150,000

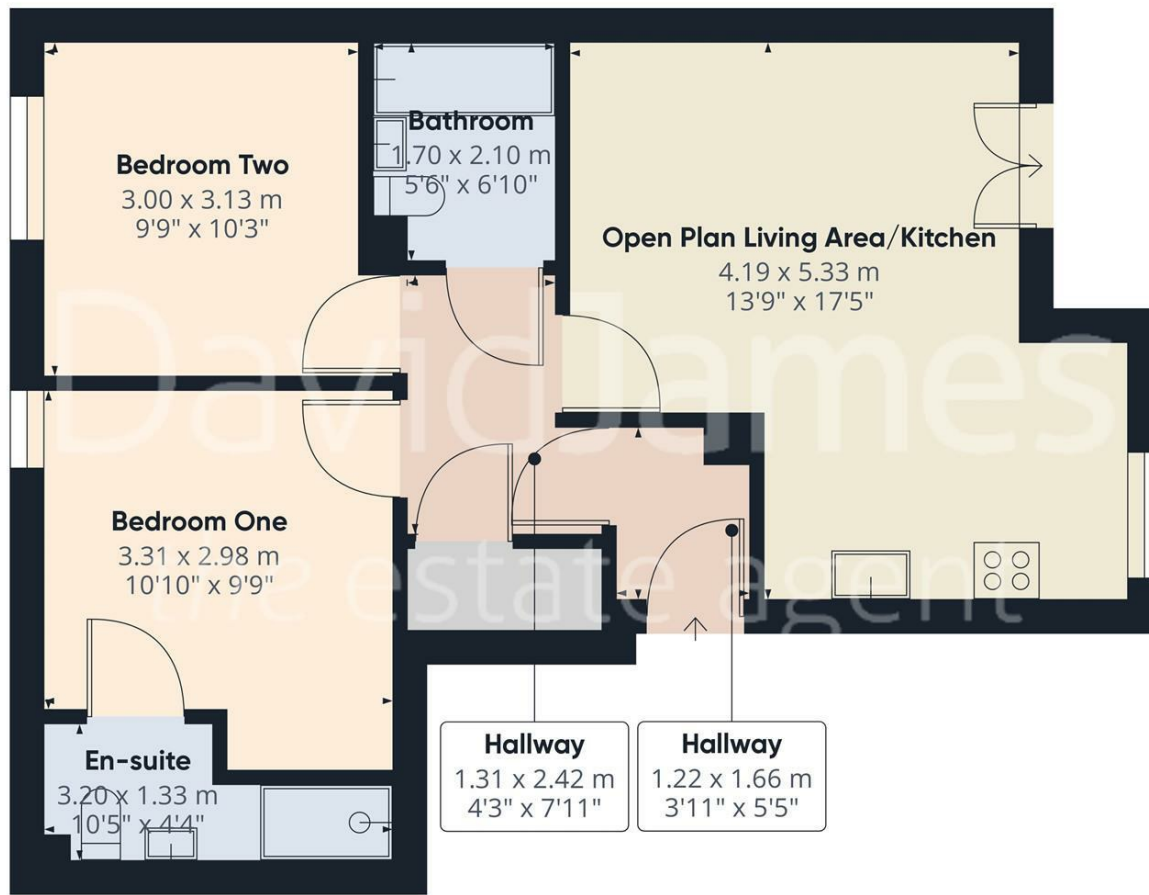
About This Property

This second-floor apartment, situated within the popular City Heights development in Mapperley, offers both the opportunity for an owner-occupier and a buy-to-let investor. Boasting two double bedrooms, the primary bedroom features fitted wardrobes and an en-suite shower room/Wc with a mains shower. As you step into the apartment, you'll find an entrance hall with laminate flooring and a handy storage cupboard. The open-plan living area benefits from French doors that lead to a Juliet balcony with views across the surrounding area. The kitchen features a range of units and an integrated oven, hob, extractor. The apartment also includes a bathroom/Wc with a white suite and shower. Additional features like electric heating, UPVC double glazing, and a security intercom provide comfort and peace of mind. Outside, there are well-maintained communal gardens and an allocated parking space ensures convenience. With the added benefit of being sold with no upward chain, this property represents a fantastic opportunity for modern living close to Mapperley's amenities.

- Second floor apartment in a modern purpose-built block
- Two double bedrooms, bedroom one with fitted wardrobes and en-suite shower room/Wc with mains shower
- Entrance hall with laminate flooring and storage cupboard
- Open plan living area with French doors to a Juliet balcony with views across the local area
- Kitchen fitted with a range of units, integrated oven, hob, extractor
- Bathroom/Wc with white suite and shower
- Electric heating, UPVC double glazing, security intercom
- Well maintained communal gardens
- Allocated parking space
- Sold with no upward chain





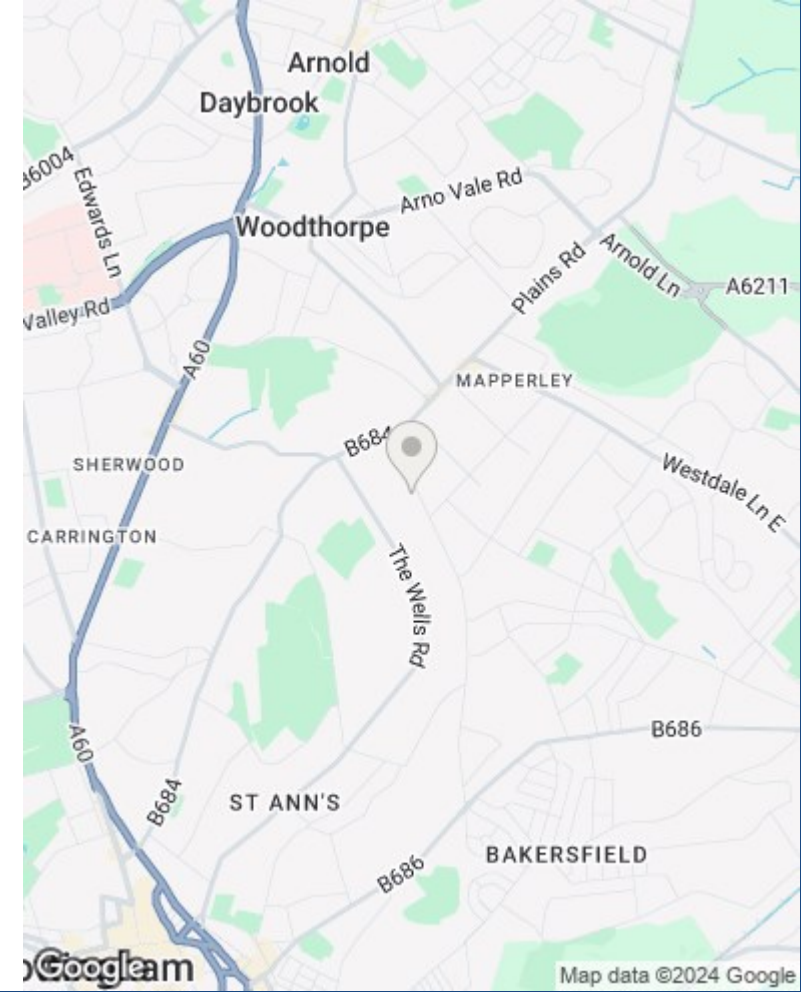


Approximate total area**
57.46 m²
618.47 ft²

Excluding balconies and terraces

While every attempt has been made to ensure accuracy, all measurements are approximate, not to scale. This floor plan is for illustrative purposes only.

GIRAFFE360



These particulars are produced in good faith, are set out as a general guide only and do not constitute any part of a contract. No person in the employment of David James Estate Agents Ltd has any authority to make any representation whatsoever in relation to the property. All services, together with electrical fittings or fitted appliances have NOT been tested. All the measurements given in the details are approximate. Floor plans are for illustrative purposes only and are not drawn to scale. The position and size of doors, windows, appliances and other features are approximate only. The photographs of this property have been taken with a 10mm wide-angle lens. No responsibility can be accepted for any loss or expense incurred in viewing. If you have a property to sell you may wish to take advantage of our free valuation service. David James Estate Agents have established professional relationships with third-party suppliers for the provision of services to Clients. As remuneration for this professional relationship, the agent receives referral commission from the third-party company. David James Estate Agents receives the following commission from each third party supplier on a per referral basis: W A Barnes Ltd: £60 including VAT. All Moves UK Ltd: 18% including VAT of the invoice total (£107 including VAT average). MoveWithUs Limited: £188 including VAT (average).

Council Tax Band: C
Nottingham City Council
Leasehold

DavidJames
the estate agent

David James Estate Agents
45b Plains Road, Nottingham, NG3 5JU
t: 0115 962 4213 e: mapperley@david-james.com

