



DavidJames
the estate agent

County Road, Gedling, Nottingham, NG4 4JL

Offers In The Region Of £270,000

About This Property

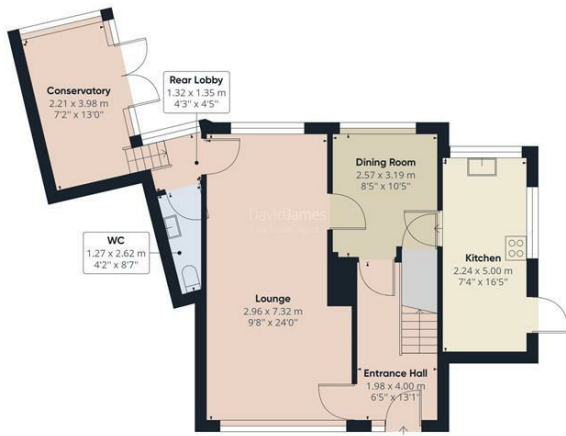
Situated in a generous plot is this EXTENDED 3 bedroom detached family home offered to the market with no upward chain and ideally situated for access to a variety of local schools, both Gedling and Mapperley's excellent range of amenities as well as the stunning Gedling Country Park! The ground floor accommodation comprises of an entrance hall, spacious lounge, separate dining room, versatile conservatory with an adjoining WC as well as a fitted kitchen with a generous range of units and integrated appliances, which include a double oven, microwave and gas hob with further space also available for freestanding appliances. Upstairs, the three bedrooms are complemented by variety of useful in-built storage cupboards and wardrobes as well as a modern family shower room with a three piece white suite and the addition of an electric shower and towel radiator. The generous garden enjoys an initial elevated patio area which leads on to a good-sized lawn with well stocked beds and borders whilst to the front, a further garden incorporates a resin driveway and garage for off-street parking.



- Detached family home with extended views and situated in a generous plot
- 3 ample sized bedrooms (with a variety of in-built wardrobes)
- PVC soffits and UPVC double glazed windows
- Spacious lounge feature wall and access to the separate dining room
- Ground floor WC and versatile conservatory with garden views and access
- Fitted breakfast kitchen with integrated oven, microwave and gas hob
- Modern family shower room with electric shower and towel radiator
- Generous established lawned garden With patio and access to a shed
- Recently laid resin path and a driveway provides access to the garage
- Sold with the benefit of no upward chain





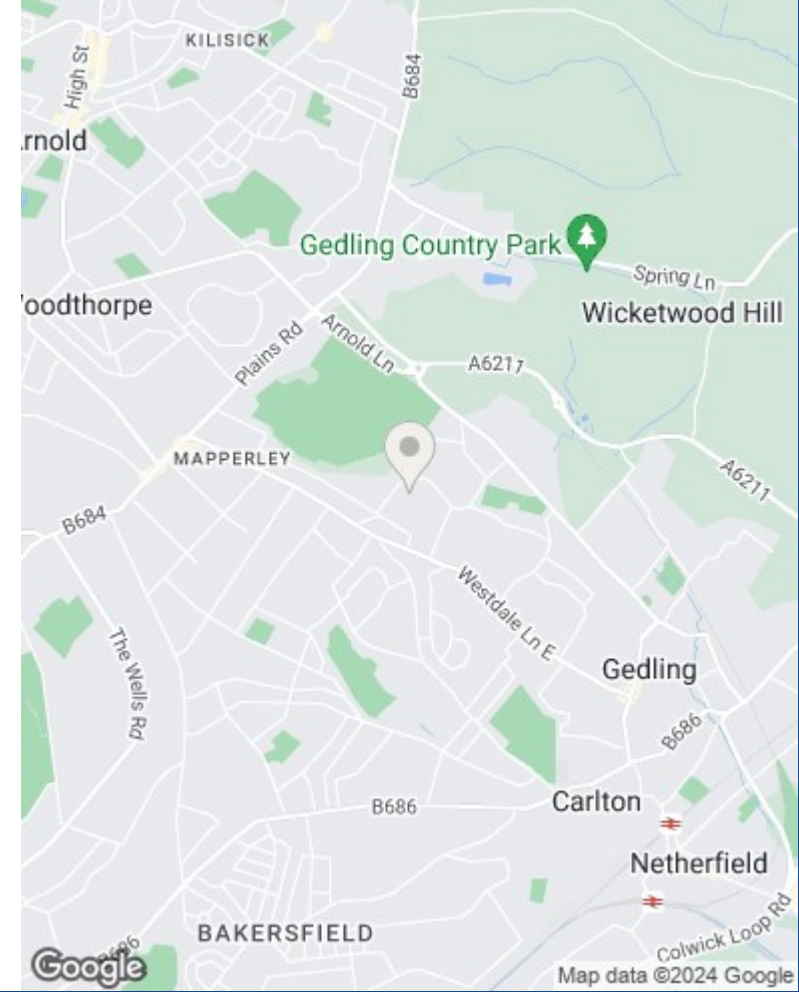


Approximate total area⁽¹⁾
 118.87 m²
 1279.51 ft²

(1) Excluding balconies and terraces

While every attempt has been made to ensure accuracy, all measurements are approximate, not to scale. This floor plan is for illustrative purposes only.

GIRAFFE360



These particulars are produced in good faith, are set out as a general guide only and do not constitute any part of a contract. No person in the employment of David James Estate Agents Ltd has any authority to make any representation whatsoever in relation to the property. All services, together with electrical fittings or fitted appliances have NOT been tested. All the measurements given in the details are approximate. Floor plans are for illustrative purposes only and are not drawn to scale. The position and size of doors, windows, appliances and other features are approximate only. The photographs of this property have been taken with a 10mm wide-angle lens. No responsibility can be accepted for any loss or expense incurred in viewing. If you have a property to sell you may wish to take advantage of our free valuation service. David James Estate Agents have established professional relationships with third-party suppliers for the provision of services to Clients. As remuneration for this professional relationship, the agent receives referral commission from the third-party company. David James Estate Agents receives the following commission from each third party supplier on a per referral basis: W A Barnes Ltd: £60 including VAT. All Moves UK Ltd: 18% including VAT of the invoice total (£107 including VAT average). MoveWithUs Limited: £188 including VAT (average).

Council Tax Band: C
Gedling Borough Council
Freehold

DavidJames
the estate agent

David James Estate Agents
 45b Plains Road, Nottingham, NG3 5JU
 t: 0115 962 4213 e: mapperley@david-james.com

