



**DavidJames**  
the estate agent

**Besecar Avenue, Gedling, Nottingham, NG4 4DP**

**Guide Price £240,000**



# About This Property

GUIDE PRICE £240,000 - £260,000 This semi-detached home, situated at the entrance of a cul-de-sac in Gedling, boasts three bedrooms, with the first two equipped with fitted wardrobes. As you step inside, you'll be greeted by an entrance hall leading to a lounge adorned with laminate flooring and an electric fire set within a fireplace. The adjacent dining room features more laminate flooring and a bay window overlooking the front of the property. There is also a UPVC conservatory with tiled flooring and access to the rear garden. The kitchen also benefits from a utility room and an outdoor store. Upstairs, there is a modern bathroom with a white suite and a separate shower cubicle equipped with an electric shower. Practical amenities include combination gas central heating and majority UPVC double glazing throughout, with the exception of the utility window. Outside, a tandem driveway offers convenient off-road parking, while a garage and a rear garden featuring two patio areas completes the outdoor space.



DavidJames  
the estate agent

- Traditional style semi detached house nestled at the start of a small cul-de-sac
- Three bedrooms, bedrooms one and two with fitted wardrobes
- Entrance hall
- Lounge with laminate flooring and electric fire set to a fireplace
- Dining room with laminate flooring and bay window to the front elevation
- UPVC conservatory with tiles flooring and part glazed door providing access to the rear garden
- Kitchen with a range of base and eye level units, utility room with outside store
- Modern first floor bathroom/Wc with white suite and separate shower cubicle with electric shower
- Combination gas central heating, majority UPVC double glazing (except utility window)
- Tandem driveway provides off road parking, garage, lawned rear garden with two patio areas

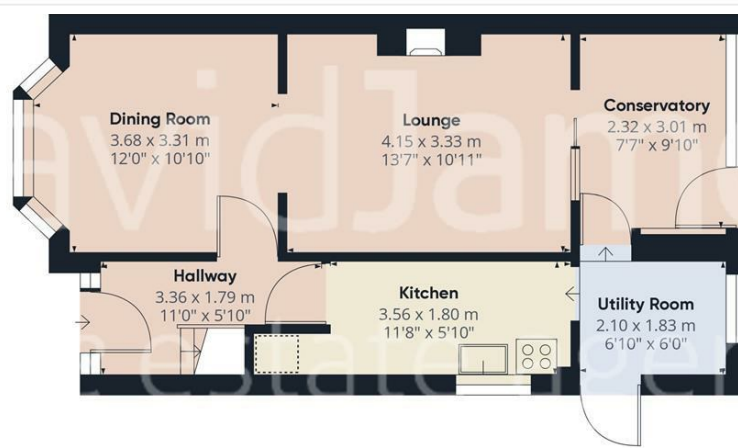


DavidJames

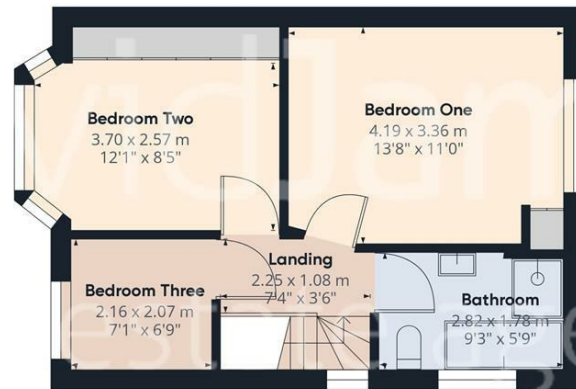








Floor 0



Floor 1



**Approximate total area\***  
87.1 m<sup>2</sup>  
937.5 ft<sup>2</sup>

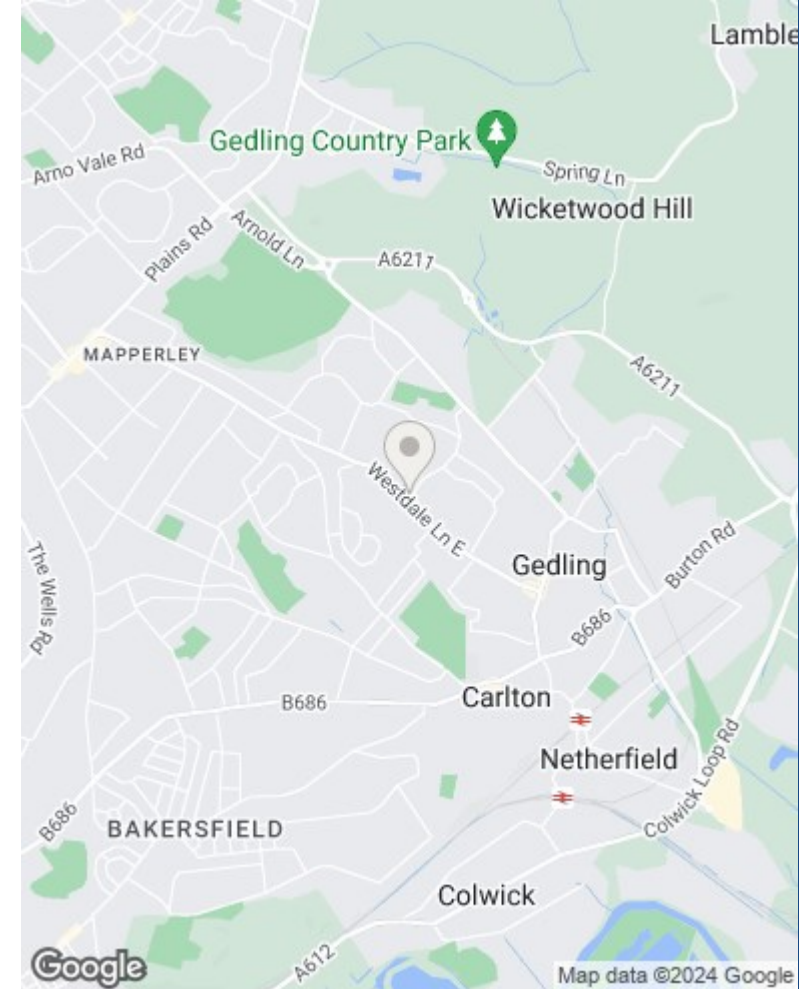
**Reduced headroom**  
0.44 m<sup>2</sup>  
4.76 ft<sup>2</sup>

Excluding balconies and terraces

Reduced headroom  
(below 1.5m/4.92ft)

While every attempt has been made to ensure accuracy, all measurements are approximate, not to scale. This floor plan is for illustrative purposes only.

GIRAFFE360



These particulars are produced in good faith, are set out as a general guide only and do not constitute any part of a contract. No person in the employment of David James Estate Agents Ltd has any authority to make any representation whatsoever in relation to the property. All services, together with electrical fittings or fitted appliances have NOT been tested. All the measurements given in the details are approximate. Floor plans are for illustrative purposes only and are not drawn to scale. The position and size of doors, windows, appliances and other features are approximate only. The photographs of this property have been taken with a 10mm wide-angle lens. No responsibility can be accepted for any loss or expense incurred in viewing. If you have a property to sell you may wish to take advantage of our free valuation service. David James Estate Agents have established professional relationships with third-party suppliers for the provision of services to Clients. As remuneration for this professional relationship, the agent receives referral commission from the third-party company. David James Estate Agents receives the following commission from each third party supplier on a per referral basis: W A Barnes Ltd: £60 including VAT. All Moves UK Ltd: 18% including VAT of the invoice total (£107 including VAT average). MoveWithUs Limited: £188 including VAT (average).

**Council Tax Band: B**  
**Gedling Borough Council**  
**Freehold**

**DavidJames**  
the estate agent

David James Estate Agents  
45b Plains Road, Nottingham, NG3 5JU  
t: 0115 962 4213 e: mapperley@david-james.com

