



DavidJames
the estate agent

Kirk Road, Mapperley, Nottingham, NG3 6GX

Offers In The Region Of £400,000

About This Property

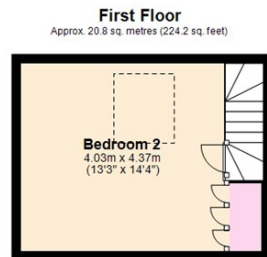
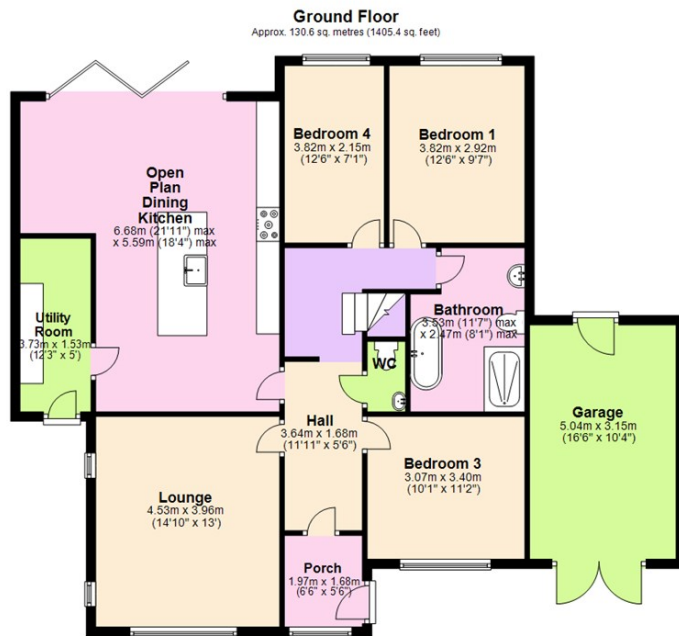
An immaculately presented, extended and much improved detached property situated within the heart of Mapperley and within easy reach of local, plentiful amenities. The property comprises a good-sized lounge with a gas fire, solid Oak floorboards and a stylish recently fitted open plan dining kitchen with underfloor heating (controlled by Hive), solid Quartz worktops and splashback with a marble finish, a range of integrated appliances (including 2 x NEFF ovens), aluminium bi-fold doors as well as a feature sky lantern. The property also boasts four bedrooms set over two floors, a family bathroom/WC with a rainfall mains shower, ground floor WC situated underneath the stairs and a separate utility room with an American style fridge freezer and space for a washing machine and tumble dryer. Outside, the property is complemented by a 'pet-proofed' rear garden with lawn, patio, a summer house which has power and lighting and also a block-paved driveway providing off-street parking for up to three cars. Viewing is highly recommended on this property as it is testament to the current owners!



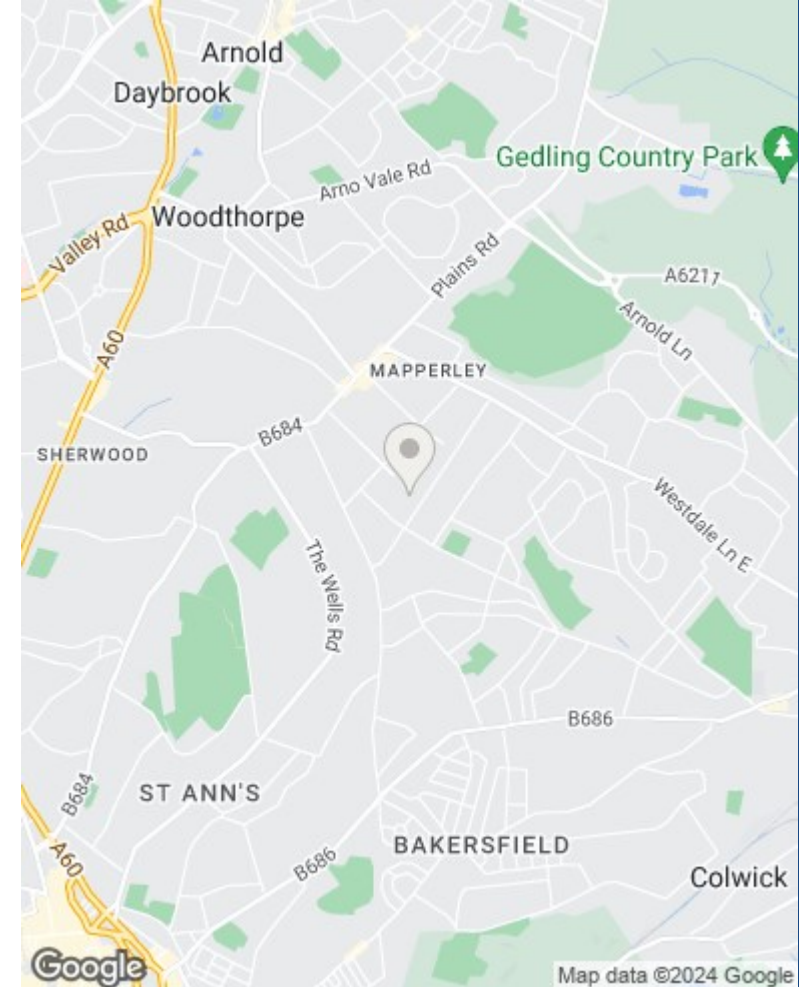
- Immaculately-presented and extended detached bungalow
- Four bedrooms set over two floors (including three doubles)
- Good-sized lounge providing views over the local area
- Stylish open plan dining kitchen with bi-fold doors
- Dining kitchen boasting an integrated seating area
- Modern family bathroom/WC with four piece suite
- Utility room and understairs ground floor WC
- UPVC double glazing and gas central heating
- 'Pet-proofed' rear garden with lawn, patio and a summerhouse
- Block-paved driveway leading to an integral garage







Total area: approx. 151.4 sq. metres (1629.6 sq. feet)



These particulars are produced in good faith, are set out as a general guide only and do not constitute any part of a contract. No person in the employment of David James Estate Agents Ltd has any authority to make any representation whatsoever in relation to the property. All services, together with electrical fittings or fitted appliances have NOT been tested. All the measurements given in the details are approximate. Floor plans are for illustrative purposes only and are not drawn to scale. The position and size of doors, windows, appliances and other features are approximate only. The photographs of this property have been taken with a 10mm wide-angle lens. No responsibility can be accepted for any loss or expense incurred in viewing. If you have a property to sell you may wish to take advantage of our free valuation service. David James Estate Agents have established professional relationships with third-party suppliers for the provision of services to Clients. As remuneration for this professional relationship, the agent receives referral commission from the third-party company. David James Estate Agents receives the following commission from each third party supplier on a per referral basis: W A Barnes Ltd: £60 including VAT. All Moves UK Ltd: 18% including VAT of the invoice total (£107 including VAT average). MoveWithUs Limited: £188 including VAT (average).

Council Tax Band: C
Gedling Borough Council
Freehold

DavidJames
the estate agent

David James Estate Agents
45b Plains Road, Nottingham, NG3 5JU
t: 0115 962 4213 e: mapperley@david-james.com

naea | propertymark
PROTECTED

