

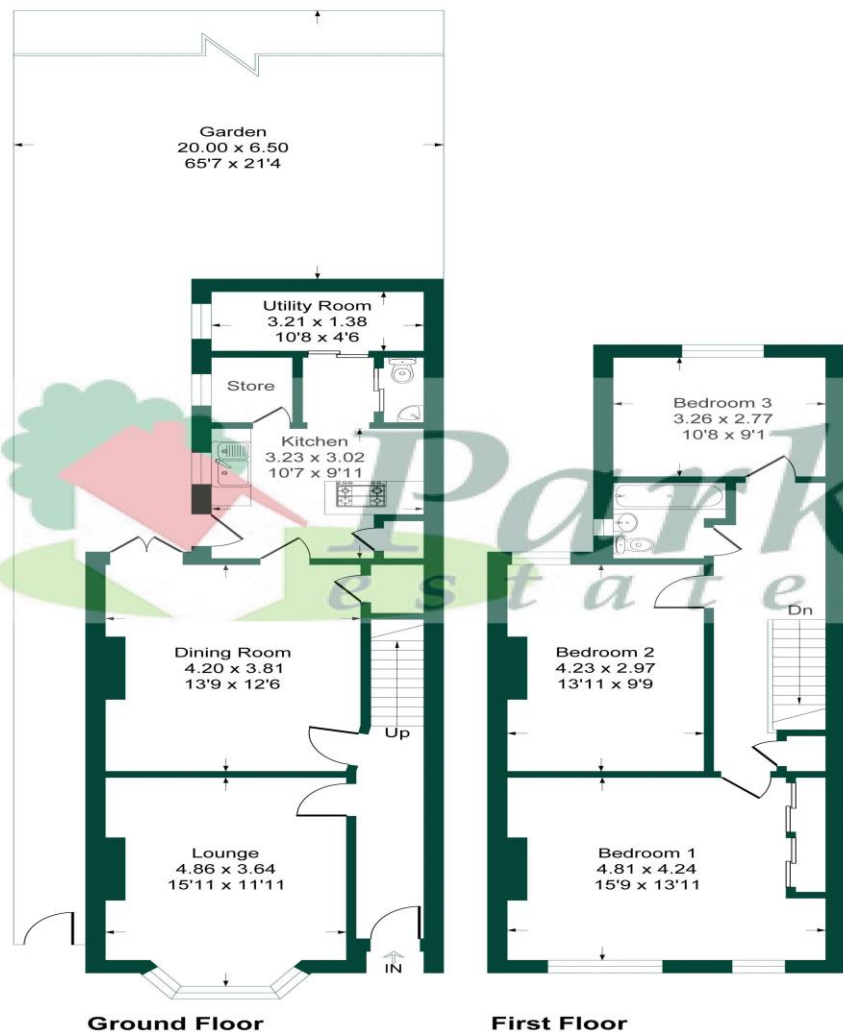


Oaklands Road, DA6

Approximate Gross Internal Area = 125.0 sq m / 1346 sq ft



Energy Efficiency Rating			
Score	Energy rating	Current	Potential
92+	A		
81-91	B		87 B
69-80	C		
55-68	D		
39-54	E	50 E	
21-38	F		
1-20	G		



This plan is for layout guidance only. Not drawn to scale unless stated. Windows and door openings are approximate. Whilst every care is taken in the preparation of this plan, please check all dimensions, shapes and compass bearings before making any decisions reliant upon them. Produced By Planpix

This larger than average 3 bedroom Victorian semi-detached house is situated on the much sought after southside of Bexleyheath and is within easy walking distance of Bexleyheath Town Centre and Townley Road grammar school. With accommodation comprising of 2 reception rooms, kitchen and utility room, which could be opened into one large space, downstairs WC, 3 large bedrooms and a bathroom. There are sympathetic modern double glazed sash windows and a new roof, guttering and newly painted fascia and soffit boards. In addition there are a number of original features, and a 65' rear garden with easy side access. Although updating is required throughout this CHAIN FREE home, it offers fantastic potential and your early viewing would be very highly recommended.

Local Authority: Bexley
Council Tax Band: E

