

LEASEHOLD



Apartment

MOORE CRESCENT, DAGENHAM, RM9 4XP

Asking Price

£210,000

FEATURES

- LARGE KITCHEN DINER
- DOUBLE BEDROOM
- GAS CENTRAL HEATING
- SMALL BALCONY
- SPACIOUS LOUNGE
- MODERN BATHROOM
- DOUBLE GLAZED
- LONG LEASE



STEPS

Estate Agents

1 Bedroom Apartment located in Dagenham

STUNNING APARTMENT ... Situated between Upney and Beacontree Stations, this immaculate first floor flat offering very spacious accommodation. The flat benefits from a large kitchen diner leading out onto a small balcony. New bathroom suite gas central heating and double glazing.

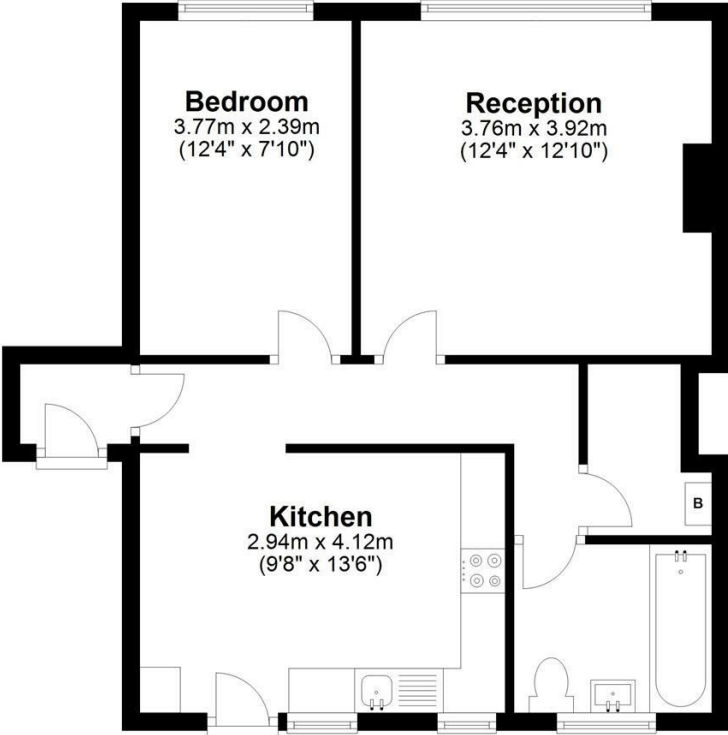
Call us on
020 8593 5933

dagenham@steps.me.uk
www.steps.me.uk

Council Tax Band
A

Ground Floor

Approx. 50.9 sq. metres (548.0 sq. feet)



Total area: approx. 50.9 sq. metres (548.0 sq. feet)

Energy Efficiency Rating		Current	Potential
<i>Very energy efficient - lower running costs</i>			
(92 plus) A			
(81-91) B			
(69-80) C		76	81
(55-68) D			
(39-54) E			
(21-38) F			
(1-20) G			
<i>Not energy efficient - higher running costs</i>			
England & Wales		EU Directive 2002/91/EC	

Agents Note: Whilst every care has been taken to prepare these particulars, they are for guidance purposes only. All measurements are approximate and are for general guidance purposes only and whilst every care has been taken to ensure their accuracy, they should not be relied upon and potential buyers are advised to recheck the measurements.

