

LEASEHOLD



Apartment

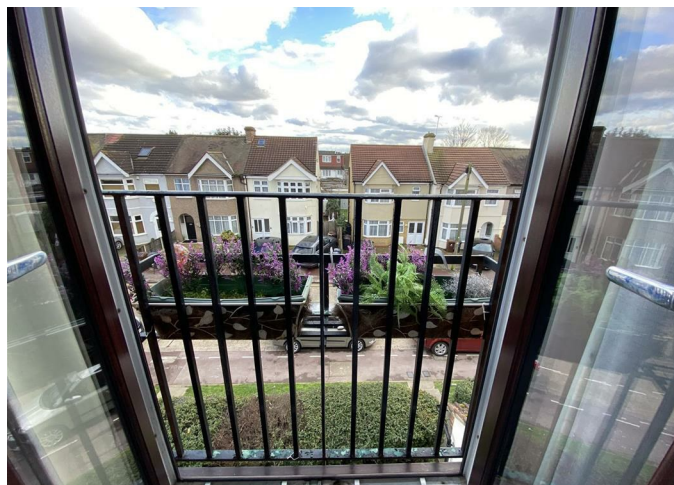
SHAFTER ROAD, DAGENHAM, RM10 8SE

Asking Price

£210,000

FEATURES

- CHAIN FREE
- Top Floor
- Fitted Kitchen
- 900 + Year Lease
- Close to Tube Station
- One Bedroom
- Allocated Parking Space



1 Bedroom Apartment located in Dagenham

Entrance

Via communal security door. Communal staircase to second floor (Top).
Private door to

Hallway

Electric panel heater. Entryphone system. Built in storage cupboard. Built in airing cupboard. Access to loft. Doors to

Living Room

12'7" x 10'4"

uPVC French doors to Juliette balcony. Electric panel heater.

Kitchen

8'11" x 7'2"

Range of fitted wall and base units with roll top work surfaces. Stainless steel single drainer sink unit with mixer taps. Tiled splashbacks. Spaces for cooker, washing machine, tumble dryer and fridge. uPVC window to rear.

Bedroom

12'3" x 8'5"

uPVC window to rear. Electric panel heater.

Bathroom

6'5" x 5'1"

Panel enclosed bath with mixer taps and shower attachment. Pedestal wash hand basin. Low level WC. Tiled splashbacks. Extractor fan. Electric fan heater.

Parking

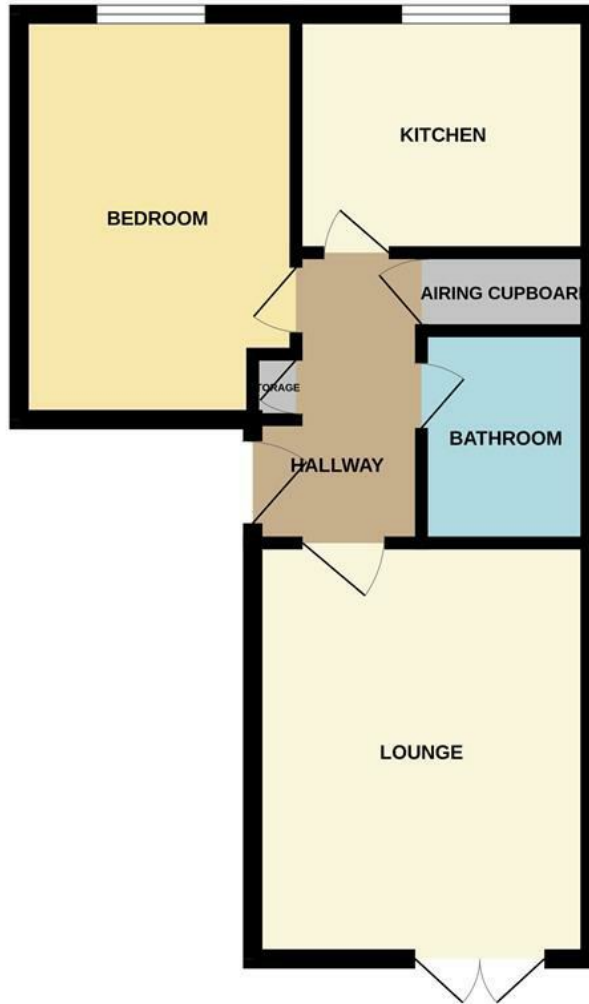
Allocated parking space

We routinely refer potential purchasers to Move with Us Ltd. It is your decision whether you choose to deal with Move with Us Ltd. In making that decision, you should know that we receive an annual payment benefits from Move with Us Ltd, equating to approximately £314.48 per referral.



DAGENHAM SALES | STEPS ESTATE AGENTS, 298 HEATHWAY, DAGENHAM, ESSEX, RM10 8LU

GROUND FLOOR



Whilst every attempt has been made to ensure the accuracy of the floorplan contained here, measurements of doors, windows, rooms and any other items are approximate and no responsibility is taken for any error, omission or mis-statement. This plan is for illustrative purposes only and should be used as such by any prospective purchaser. The services, systems and appliances shown have not been tested and no guarantee as to their operability or efficiency can be given.
Made with Metropix ©2024

Call us on

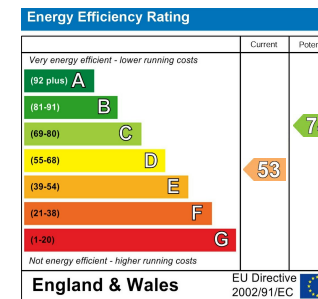
020 8593 5933

dagenham@steps.me.uk

www.steps.me.uk

Council Tax Band

A



Agents Note: Whilst every care has been taken to prepare these particulars, they are for guidance purposes only. All measurements are approximate and are for general guidance purposes only and whilst every care has been taken to ensure their accuracy, they should not be relied upon and potential buyers are advised to recheck the measurements.

