

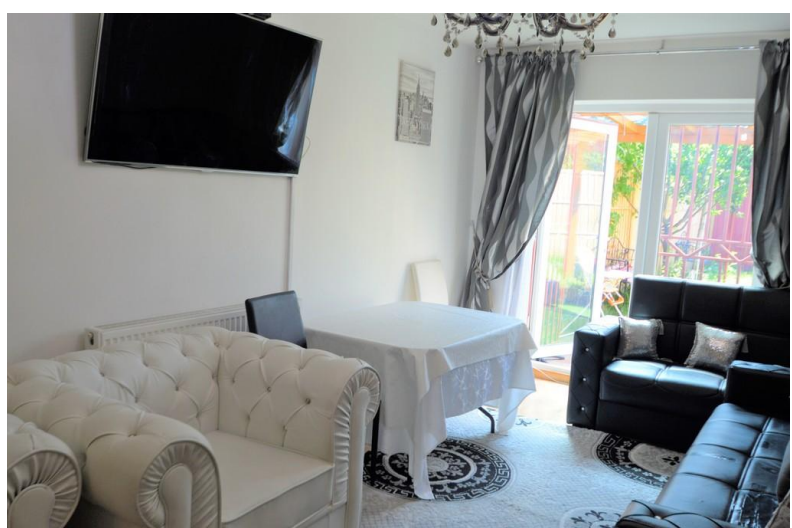
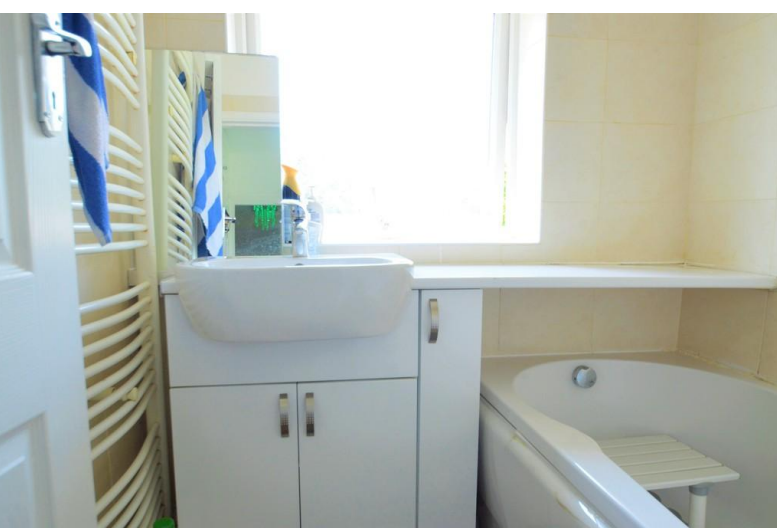


Hedgemans Way, Dagenham

Guide Price £425,000

- NO ONWARD CHAIN
- THREE BEDROOMS
- FIRST FLOOR BATHROOM
- LOUNGE





425,000 to £450,000 (Guide Price) Steps Estate Agents are pleased to offer for sale this chain free end of terraced house located in the Becontree tube area. Benefitting from a spacious lounge, fitted kitchen ground floor w/c, and a first floor bathroom, Additionally the property has been enlarged at the rear to offer a second reception and bedroom. This family home needs an early viewing to avoid disappointment.

### **ENTRANCE**

Via double glazed door to hallway, stairs to first floor,

### **RECEPTION ONE**

12' 5" x 9' 6" (3.78m x 2.9m) Double glazed window to front, radiator.

### **KITCHEN**

15' 2" x 8' 3" (4.62m x 2.51m) Access to reception and lobby, single bowl sink inset into roll edge work top surfaces, a range of matching eye and base level units, integrated oven, hob and extractor hood, built in cupboard tiled splash backs.

### **LOBBY**

Double door to rear garden, door to w/c, and under stairs cupboard.

### **W/C**

Low flush w/c, wash hand basin, wall mounted boiler.

### **RECEPTION TWO**

19' 4" x 9' 4" (5.89m x 2.84m) Double glazed window and door to rear garden, door to bedroom.

### **BEDROOM THREE**

18' 4" x 7' 1" (5.59m x 2.16m) Double glazed window to rear, radiator.

### **LANDING**

Double glazed window to side, access to loft,

### **BEDROOM ONE**

18' 6" x 10' 10" (5.64m x 3.3m) Two double glazed windows to front, radiator.

### **BEDROOM TWO**

11' 6" x 9' 10" (3.51m x 3m) Double glazed window to rear, fitted cupboard, radiator.

### **BATHROOM**

Double glazed window to rear, panel bath with mixer taps and shower attachments, vanity wash hand basin, towel radiator, tiled walls.

### **WC**

Double glazed window to rear, low flush w/c.

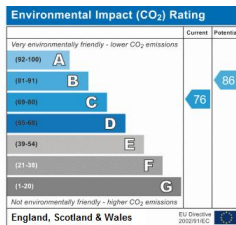
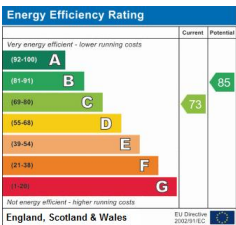
### **GARDEN**

Side access, grass section, pagoda, flower beds, shed internal (6.27m x 2.64m)

Agents Note.

We routinely refer potential purchasers to Move with Us Ltd. It is your decision whether you choose to deal with Move with Us Ltd. In making that decision, you should know that we receive an annual payment benefits from Move with Us Ltd, equating to approximately £314.48 per referral.





### COUNCIL TAX BAND

Tax band C

### TENURE

Freehold

### LOCAL AUTHORITY

Barking and Dagenham London Borough Council

### OFFICE

Steps Estate Agents  
298 Heathway  
Dagenham  
Essex  
RM10 8LU

**T:** 020 8593 5933

**E:** [dagenham@steps.me.uk](mailto:dagenham@steps.me.uk)

**W:** [www.stepsestateagents.co.uk](http://www.stepsestateagents.co.uk)

Agents Note: Whilst every care has been taken to prepare these sales particulars, they are for guidance purposes only. All measurements are approximate are for general guidance purposes only and whilst every care has been taken to ensure their accuracy, they should not be relied upon and potential buyers are advised to recheck the measurements