

Town & Country

Estate & Letting Agents

Yorke Street, Wrexham

£299,950

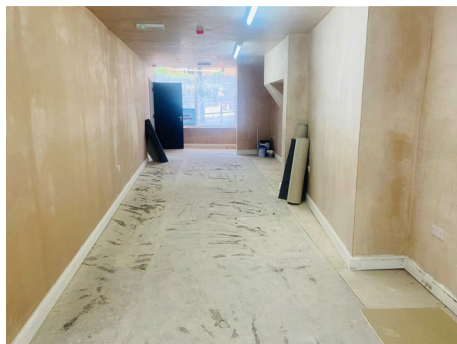


A rare opportunity to purchase a completely renovated city retail unit with basement storage along with 4 studio apartments.

The studio apartments offer open plan living with a newly fitted kitchen and a separate modern shower room, the agents are advised that the potential rental income for the apartments is in the region of £750 per calendar month per apartment.

Imperial Buildings, King Street, Wrexham, LL11 1HE
info@townandcountrywrexham.com

TEL: 01978 291345



Retail Unit

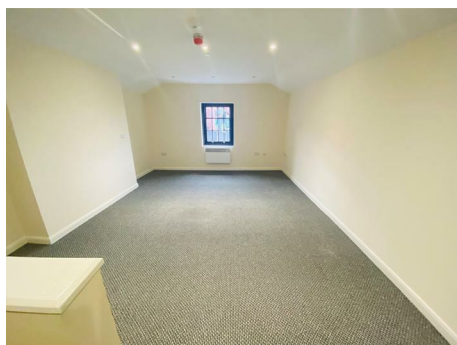
60' x 18'

Fully modernised retail unit in a prominent city centre location, with basement storage below.



Basement Storage

Measuring approximately 250sq. ft with external access door.



Apartment One

23'7 x 14'2

Newly modernised apartments offering open plan living, kitchen area fitted with a range of wall and base units, with worksurface space housing a stainless

steel sink and drainer unit, intergraded oven and hob and space for a undercounter fridge. Separate shower room fitted with a modern three piece suite and heated towel rail.



Apartment Two

20'8 x 12'11

Newly modernised apartments offering open plan living, kitchen area fitted with a range of wall and base units, with worksurface space housing a stainless steel sink and drainer unit, intergraded oven and hob and space for a undercounter fridge. Separate shower room fitted with a modern three piece suite and heated towel rail.



Apartment Three

23'7 x 14'2

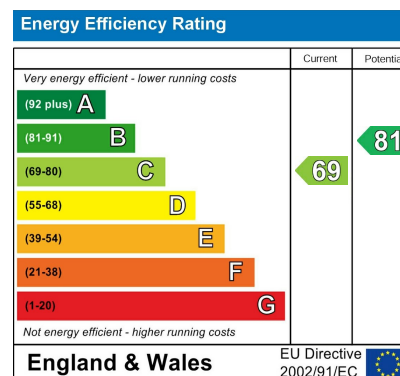
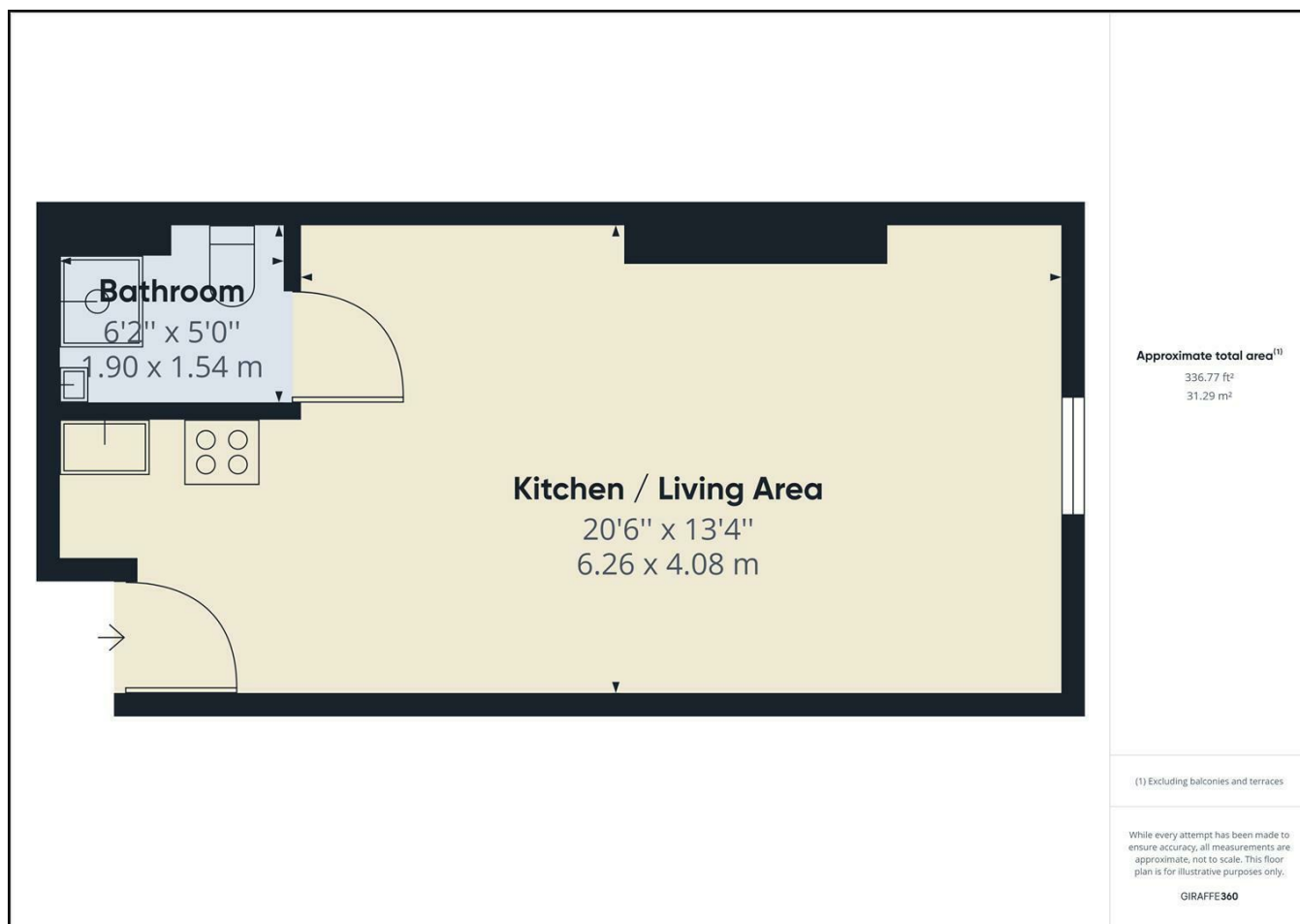
Newly modernised apartments offering open plan living, kitchen area fitted with a range of wall and base units, with worksurface space housing a stainless steel sink and drainer unit, intergraded oven and hob and space for a undercounter fridge. Separate shower room fitted with a modern three piece suite and heated towel rail.



Apartment Four

20'6 x 13'4

Newly modernised apartments offering open plan living, kitchen area fitted with a range of wall and base units, with worksurface space housing a stainless steel sink and drainer unit, intergraded oven and hob and space for a undercounter fridge. Separate shower room fitted with a modern three piece suite and heated towel rail.



These particulars, whilst believed to be accurate are set out as a general outline only for guidance and do not constitute any part of an offer or contract. Intending purchasers should not rely on them as statements of representation of fact, but must satisfy themselves by inspection or otherwise as to their accuracy. No person in this firm's employment has the authority to make or give any representation or warranty in respect of the property.