



Vermeer Gardens, SE15

£700,000

A three double bedroom freehold house arranged over three floors in the peaceful private drive Vermeer Gardens. The house has a beautiful sunny garden and comes with ownership of a parking space and a share of the drive at front of the house.

Vermeer Gardens is a lovely residential cul de sac with easy access to the green open spaces of Peckham Rye Park and the leafy Nunhead Cemetery nature reserve. Local bars and restaurants can be found along Nunhead Lane, Forest Hill Road and Lordship Lane, with transport links provided via multiple bus networks and rail links from Nunhead, Brockley and Peckham Rye station serving London Bridge, Victoria and City Thameslink.

Features

- Freehold House
- Allocated Parking Space
- Mature Garden
- Cul-De-Sac
- Short Walk To Peackham Rye
- Three Bedrooms

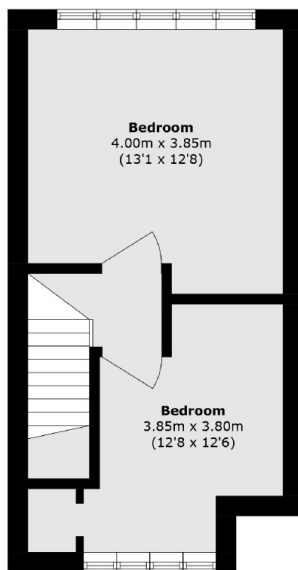


Vermeer Gardens, SE15

The ground floor is an expansive open plan space, where the kitchen, dining, and reception areas have been seamlessly combined to create a warm, sociable heart to the home. Bathed in natural light and ideal for entertaining, this space flows directly onto a mature private garden, perfect for outdoor dining or simply relaxing. On the first floor, the principal bedroom features a walk-in wardrobe, providing excellent storage, while the family-sized bathroom is stylishly finished and well-appointed. On the third floor of the house are two further sunny double bedrooms with tree top views.

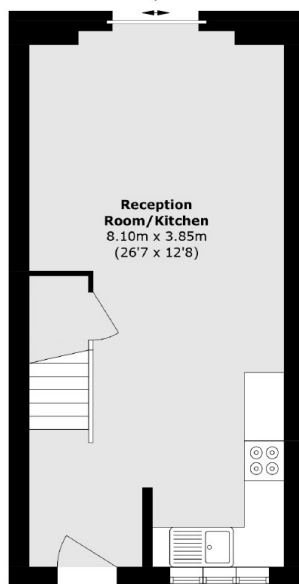


Vermeer Gardens, London, SE15

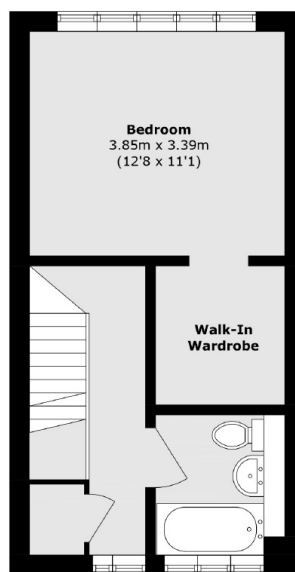


To Garden

Second Floor



Ground Floor



First Floor

Total area (approx.): 91.1 sq. m (980.6 sq. ft)