



## Shenley Road, SE5

£425,000

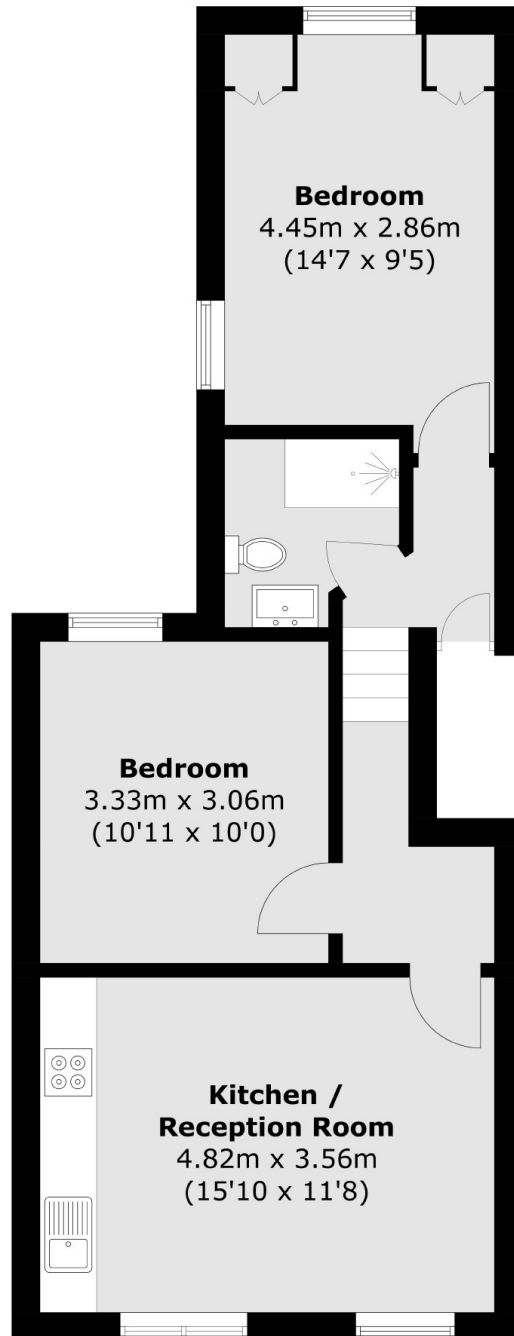
A charming two-bedroom flat situated over the top floor of an attractive Victorian house. The property comprises bright open plan kitchen / reception, two good-size bedrooms and modern shower room/wc

Shenley Road is a tree lined sought after street perfectly situated for frequent rail links from Peckham Rye station. Peckham Road and Bellenden Road are within easy reach and offer access to an array of independent shops, bars and restaurants.

### Features

- Victorian Conversion
- Top Floor
- Two Bedrooms
- Bright Open Plan Living
- Tree Lined Road
- Close To Amenities

# Shenley Road, London, SE5



Total area (approx.): 50.8 sq. m (546.8 sq. ft)