



Tritton Road, SE21

£475,000

A stylish and modern first-floor flat on Tritton Road, newly refurbished and being sold with no onward chain.

Perfectly located just 12 minutes' walk from West Dulwich station, with direct trains to London Victoria in around 12 minutes, and surrounded by a vibrant selection of shops, cafes, and restaurants. Additional lifestyle options can be found in nearby West Norwood, Crystal Palace, Herne Hill, Dulwich Village, and East Dulwich.

Features

- Two Double Bedrooms
- No Onward Chain
- First Floor Flat
- Open Plan Kitchen/Reception
- Private Roof Terrace
- Prime Location

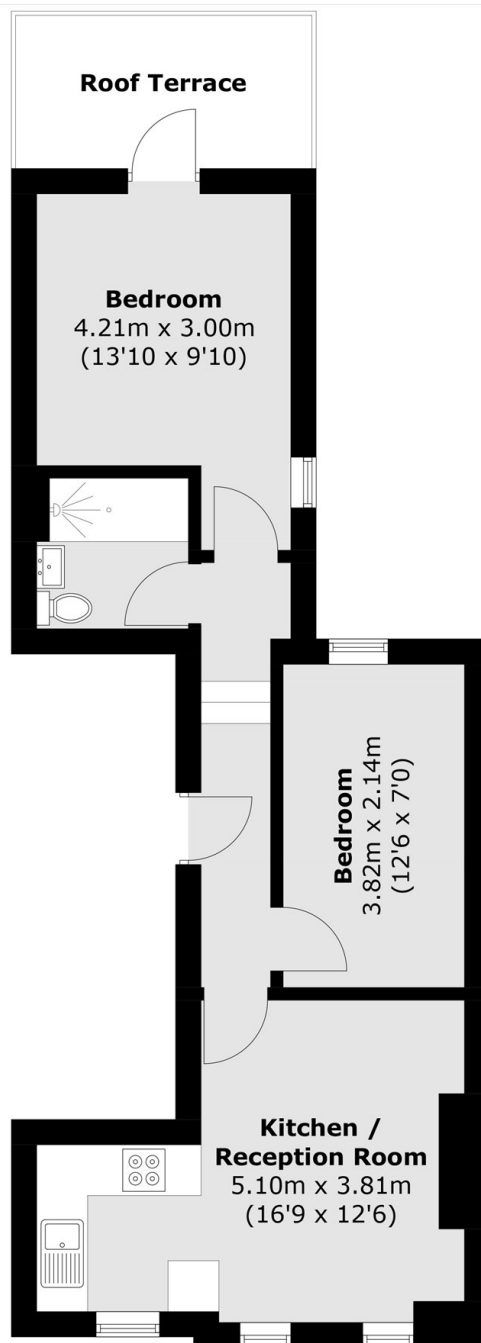


Tritton Road, SE21

The property features two spacious double bedrooms, a sleek contemporary bathroom suite, and an open-plan kitchen/living area complete with a fully fitted kitchen ideal for both relaxing and entertaining. The main bedroom benefits from a private terrace, offering a peaceful outdoor retreat.



Tritton Road,
London, SE21



First Floor

Total area (approx.): 44.1 sq. m (474.7 sq. ft)
Roof Terrace (approx.): 6.3 sq. m (67.8 sq. ft)

Dexters

Peckham Rye
2 Barry Parade
Barry Road
London
Sales
020 8742 4146

Energy Rating: D. We aim to make our particulars both accurate and reliable. However they are not guaranteed; nor do they form part of an offer or contract. If you require clarification on any points then please contact us, especially if you're traveling some distance to view. Please note that appliances and heating systems have not been tested and therefore no warranties can be given as to their good working order.

 **RICS** | Regulated
Estate Agent
and Letting Agent

[dexters.co.uk](https://www.dexters.co.uk)