



Shenley Road, SE5

£620,000

This stylish and contemporary ground floor Victorian conversion with private rear garden enjoys a convenient location as well as benefiting from a range of period features. Sold with a 50% share of freehold.

Shenley Road is a quiet residential street situated within easy reach of Camberwell Green, which offers an eclectic selection of restaurants, bars and cafés. Brunswick Park and Ruskin Park offer green open spaces, with frequent rail links from Denmark Hill Station with its regular services to London Victoria and London Blackfriars.

Features

- Ground Floor Period Conversion
- Newly Renovated
- Two Double Bedrooms
- Private Garden
- Sought After Street
- Share Of Freehold

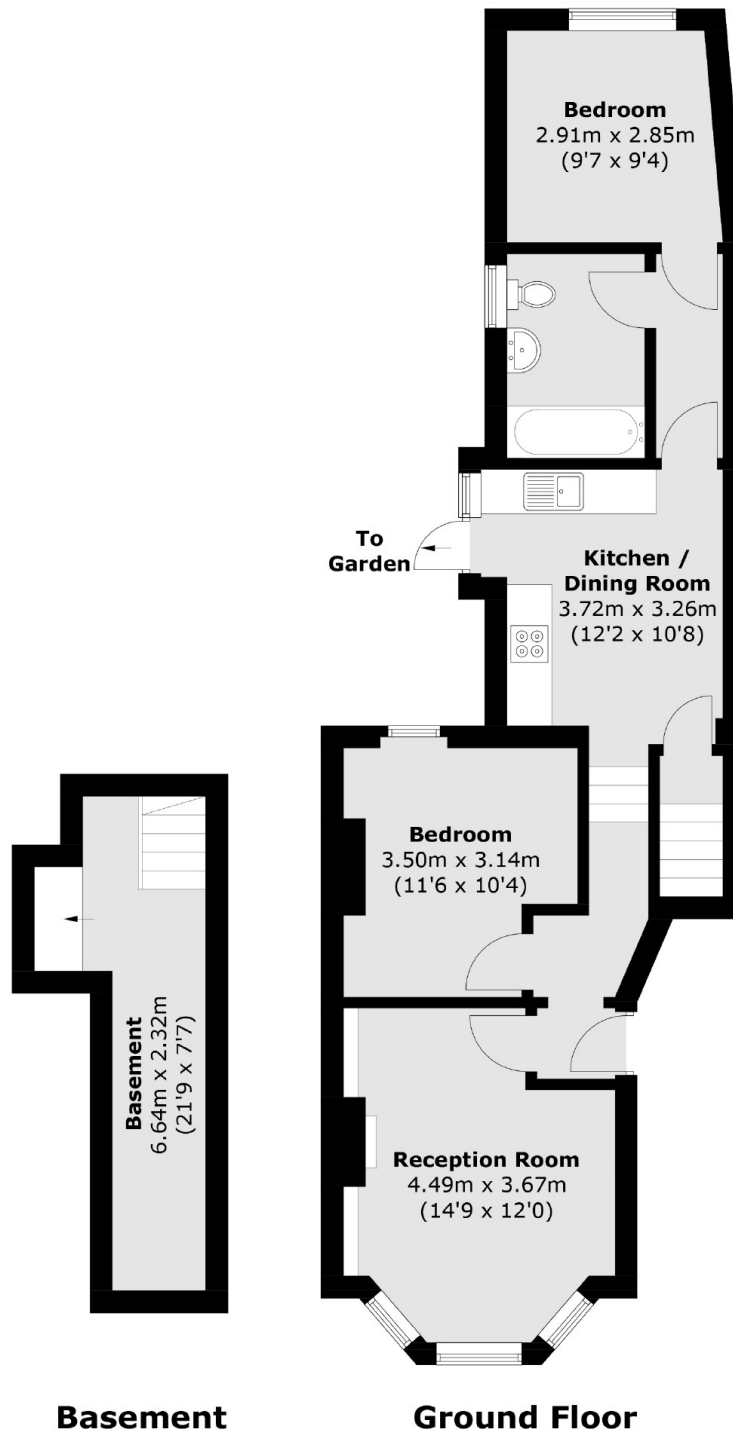


Shenley Road, SE5

Newly renovated and well maintained throughout the property has impressive proportions, including two goodsize bedrooms, a modern eat-in kitchen leading out to a lawned rear garden and a bright front reception room with high ceilings, large bay window and attractive fireplace.



Shenley Road, London, SE5



Total area (approx.): 70.0 sq. m (753.3 sq. ft)

Dexters

Peckham Rye
2 Barry Parade
Barry Road
London

Sales
020 8742 4146

Energy Rating: D. We aim to make our particulars both accurate and reliable. However they are not guaranteed; nor do they form part of an offer or contract. If you require clarification on any points then please contact us, especially if you're traveling some distance to view. Please note that appliances and heating systems have not been tested and therefore no warranties can be given as to their good working order.

 **RICS** | Regulated
Estate Agent
and Letting Agent

[dexters.co.uk](https://www.dexters.co.uk)