



York Grove, SE15

£390,000

Nestled in the heart of the sought-after area of SE15, this charming one-bedroom ground-floor garden flat is a fantastic opportunity for both first-time buyers and investors.

Perfectly placed a few minutes walk from Queens Road Peckham Station (Zone 2) with frequent Overground and rail links into Central London. The shops, bars and restaurants of Peckham high street, Nunhead and Camberwell are all within close proximity.

Features

- Period Conversion
- Ground Floor
- One Bedroom
- Large Private Garden
- Chain Free
- Excellent Location



York Grove, SE15

Set within a beautifully converted Victorian building, this home exudes character and offers a perfect blend of modern living with classic charm.

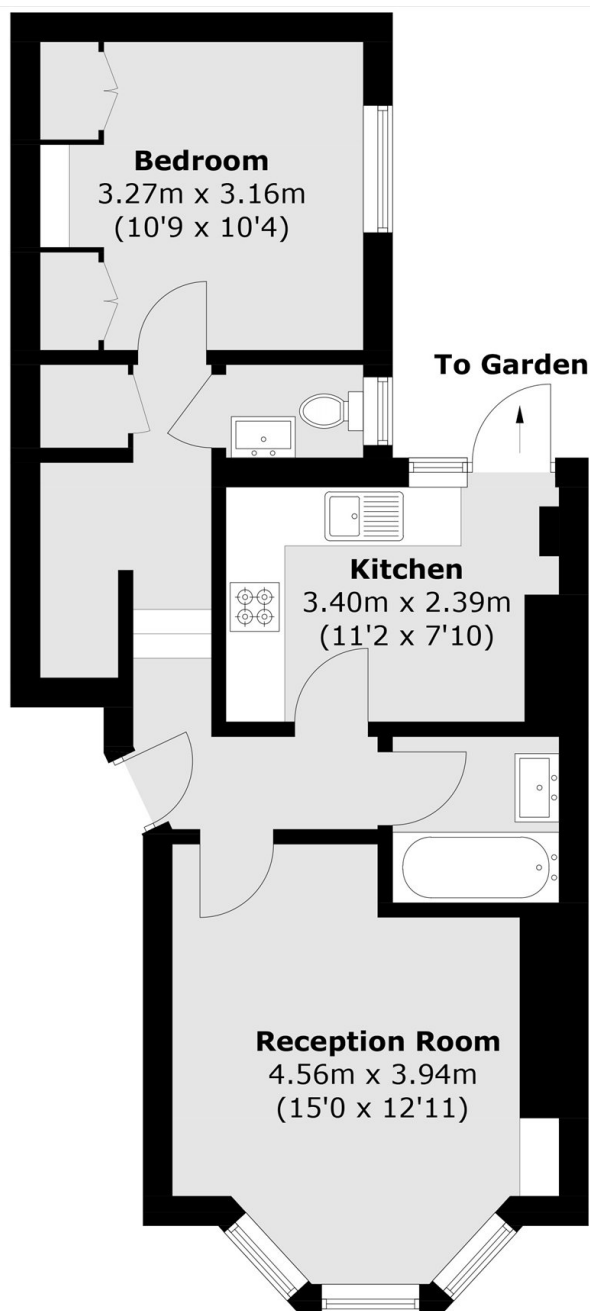
Upon entering, you are welcomed into a spacious living area with high ceilings, and bay window with shutters that shower the room with natural light. The bedroom is generously sized, offering ample space for furniture and also includes built in wardrobes. The property boasts a well-appointed kitchen and a stylish, fully equipped bathroom.

One of the standout features of this flat is the large private garden, offering a perfect space for outdoor dining, entertaining, or simply enjoying the sunshine in a secluded setting.

Chain free and ready for immediate occupation.



York Grove, London, SE15



Total area (approx.): 48.8 sq. m 525.3 sq. ft)

Dexters

Peckham Rye
2 Barry Parade
Barry Road
London
Sales
020 8742 4146

Energy Rating: D. We aim to make our particulars both accurate and reliable. However they are not guaranteed; nor do they form part of an offer or contract. If you require clarification on any points then please contact us, especially if you're traveling some distance to view. Please note that appliances and heating systems have not been tested and therefore no warranties can be given as to their good working order.

 **RICS** | Regulated
Estate Agent
and Letting Agent

dexters.co.uk