



## Peckham Rye, SE15

£300,000

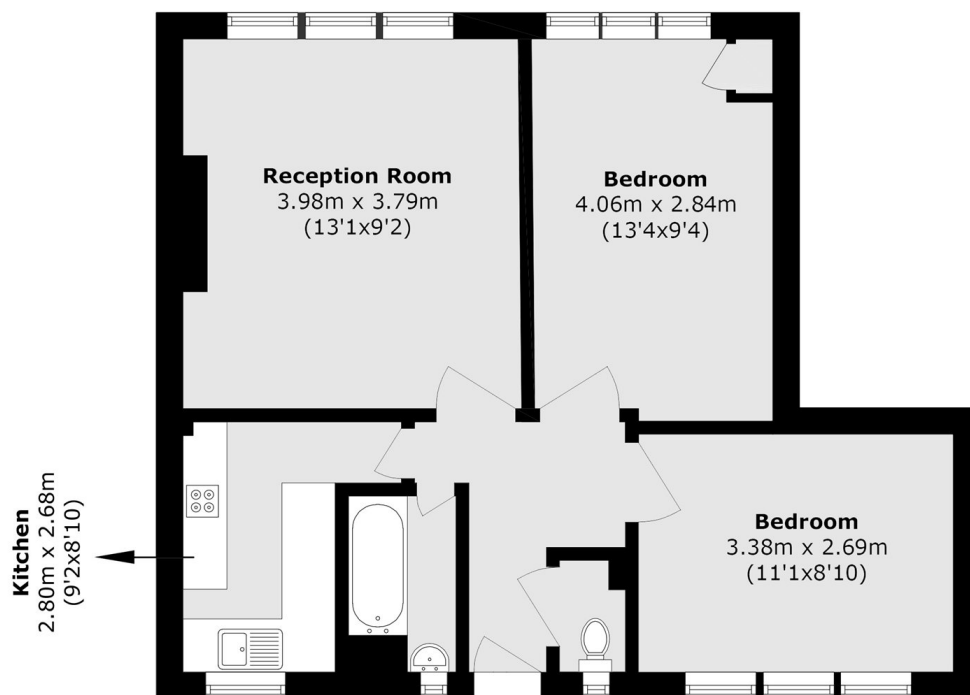
A two double bedroom top floor flat offering 572 square feet of living space in a fantastic location by Peckham Rye park.

Conveniently located and within easy reach of Peckham Rye & Nunhead stations. Lordship Lane & Nunhead Lane are both within close proximity, and offer an array of independent shops, cafés and restaurants.

### Features

Two Double Bedrooms  
Close To Peckham Rye Park  
Top Floor  
Views Of City Skyline  
Purpose Built  
572 Square Foot

# Peckham Rye, London, SE15



Total area (approx.): 53.2 sq. m (572.6 sq. ft)