



## Dewar Street, SE15

£475,000

Situated in a sought-after modern development close to both Peckham Rye Park and Peckham Rye Station, this two bedroom flat benefits from a long lease, allocated parking space, and secure entry.

Dewar Street is located in the heart of Peckham Rye moments from an abundance of shopping amenities and excellent restaurants and bars along Lordship Lane. Peckham Rye & East Dulwich stations provides rail links to the city with the open spaces of Peckham Rye Park on your doorstep.

### Features

- Two Double Bedrooms
- Long Lease
- Ample Loft Storage
- Allocated Parking Space
- Amazing Park Views
- Recently Renovated



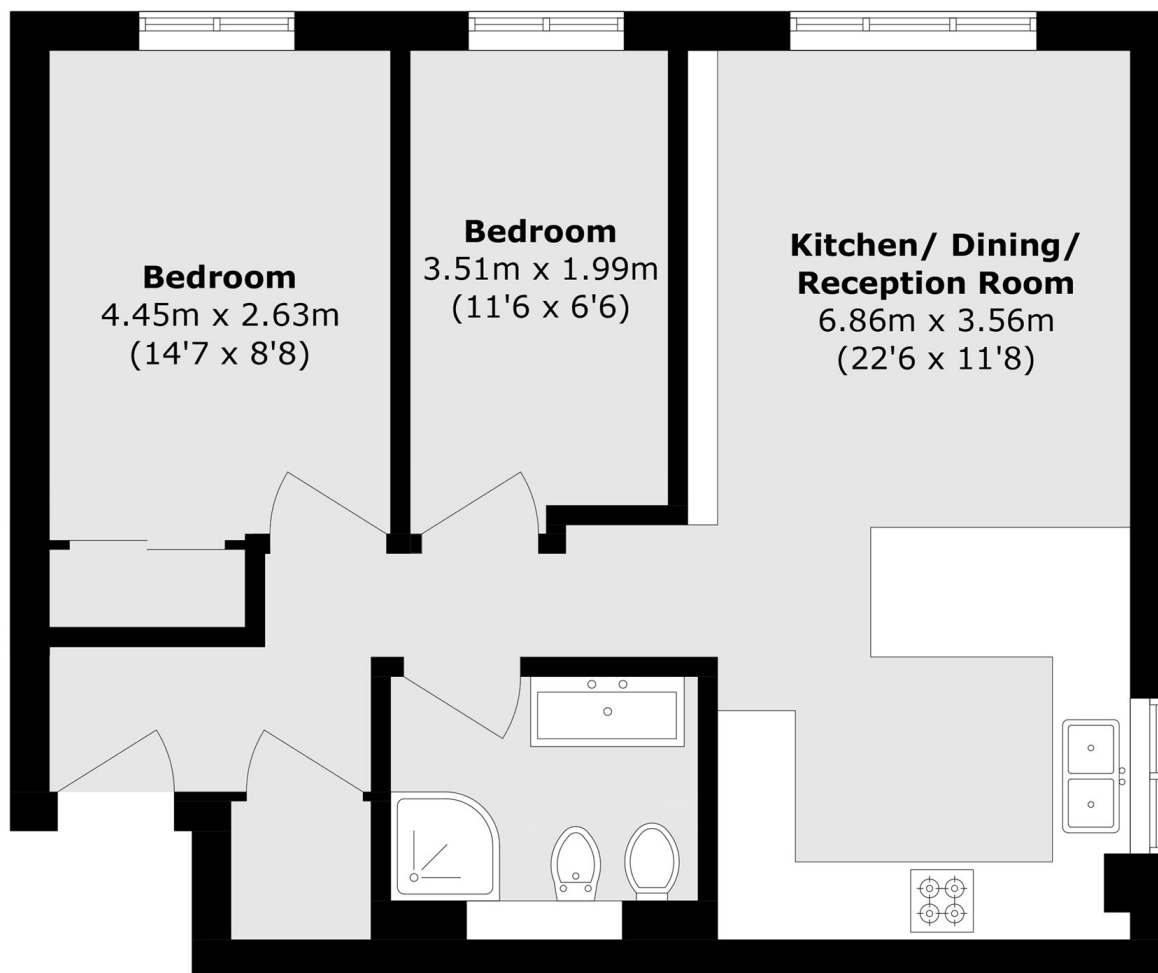
## Dewar Street, SE15

This recently renovated property boasts a spacious open-plan reception and kitchen area, ideal for both relaxing and entertaining. The fully fitted kitchen features modern appliances and a stylish breakfast bar, creating a sociable hub perfect for modern lifestyles. There are two generous double bedrooms, each offering excellent natural light and ample storage space, along with a sleek, stylish bathroom finished to a high standard with modern fittings and a clean finish.





Dewar Street,  
London, SE15



Total area (approx.): 55.5 sq. m (597.4 sq. ft)

**Dexters**

Peckham Rye  
2 Barry Parade  
Barry Road  
London  
Sales  
020 8742 4146

Energy Rating: C. We aim to make our particulars both accurate and reliable. However they are not guaranteed; nor do they form part of an offer or contract. If you require clarification on any points then please contact us, especially if you're traveling some distance to view. Please note that appliances and heating systems have not been tested and therefore no warranties can be given as to their good working order.

 **RICS** | Regulated  
Estate Agent  
and Letting Agent

dexters.co.uk