



Rye Road, SE15

£535,000

A beautifully presented two bedroom Victorian first floor maisonette, ideal for buyers looking for charm, space and character in a fantastic location on Rye Road SE15.

Perfectly placed for Nunhead or Honor Oak Park stations with frequent trains to Victoria, Blackfriars, City Thameslink, Farringdon and St Pancras. Located within close proximity to the open spaces of Peckham Rye Park and the nature reserve of Nunhead Cemetery.

Features

- Two Bedrooms
- Victorian Maisonette
- Excellent Location
- Proximity to Green Spaces
- First Floor Flat
- Great Condition

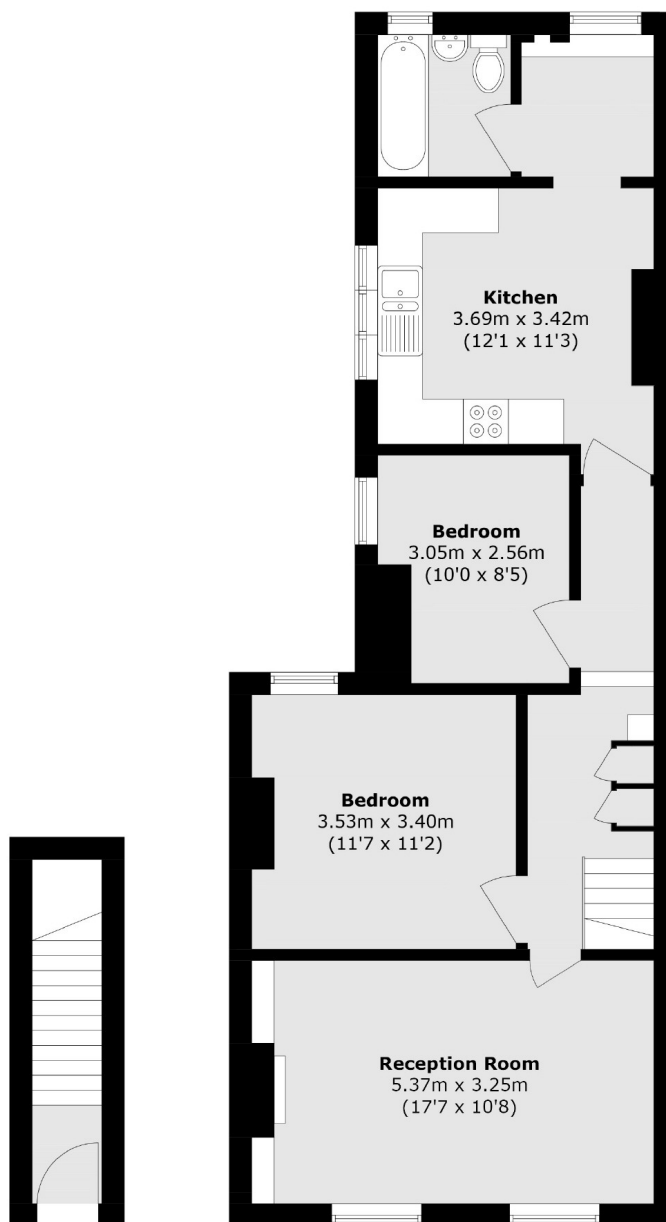


Rye Road, SE15

Accessed via your own private front door, this light filled property combines period charm with modern convenience. As you ascend the stairs, you're greeted by a spacious reception room boasting two large windows, flooding the space with natural light. With high ceilings, a feature fireplace, and room for a dining area, it's the perfect space for entertaining or relaxing after work. The flat offers two double bedrooms, ideal for sharers, a guest room, or a dedicated home office. The modern, fully fitted kitchen is a real highlight offering an abundance of worktop space and storage. To the rear, you'll find a well-appointed bathroom and the added bonus of a separate utility area a rare find in period flats and perfect for keeping laundry tucked away.



Rye Road, London, SE15



Ground Floor

First Floor

Total area (approx.): 73.3 sq. m (789.0 sq. ft)