



Frobisher Place, SE15

£795,000

Set within the landmark Pioneer Centre, this striking split level apartment combines bold Modernist heritage with refined Scandinavian design. A private terrace, generous natural light, and soaring ceilings enhance the sense of space, while residents enjoy an exceptional array of amenities including a refurbished tennis court, gym, landscaped gardens, and a 25-metre covered swimming pool. The property also benefits from secure gated entry and an allocated parking space.

The Pioneer Centre enjoys an exceptionally convenient setting, just a short walk from Queens Road station, offering swift links to London Bridge, Shoreditch and Dalston easily connected to the Elizabeth Line from Whitechapel Station. The surrounding neighbourhood has become one of South London's most vibrant quarters, with an ever-growing mix of independent bars, restaurants, and cafés. For green space and village-like charm, the wide open expanse of Peckham Rye is also within easy reach. Amazing views of London can be enjoyed from nearby Telegraph Hill.

Features

- Historical Landmark Building
- Private Terrace
- Great Community
- Impressive Swimming Pool
- Allocated Parking
- Beautifully Designed



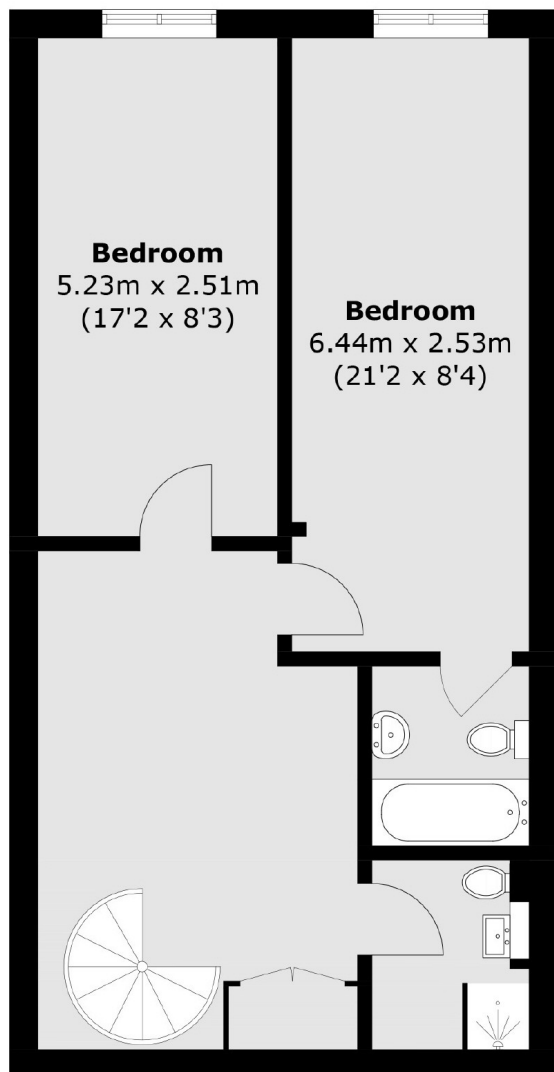
Frobisher Place, SE15

Grade II* Listed Modernist building, famously described by Walter Gropius as "an oasis of glass in a desert of brick". Originally built to house 'The Peckham Experiment' an innovative health centre in the 1930s. On arrival, the development makes a confident architectural statement: dramatic glasswork, exposed concrete, and lush planting pay homage to its celebrated history as a leisure and health centre. Inside, communal areas showcase archival photography and provide practical touches such as bike storage, lifts, and a soon-to-be completed multi-purpose room.

The apartment itself opens to a double height reception room, where floor-to-ceiling windows flood the interiors with daylight and connect seamlessly to a quiet private terrace. A sculptural spiral staircase leads to the lower level, which offers two spacious double bedrooms, an en suite, and a newly refurbished family bathroom all designed with a sleek, contemporary finish.



Frobisher Place, London, SE15



Ground Floor



First Floor

Total area (approx.): 92.5 sq. m (995.5 sq. ft)
Terrace: 19.3 sq. m (207.7 sq. ft)