



Bournemouth Road, SE15

£415,000

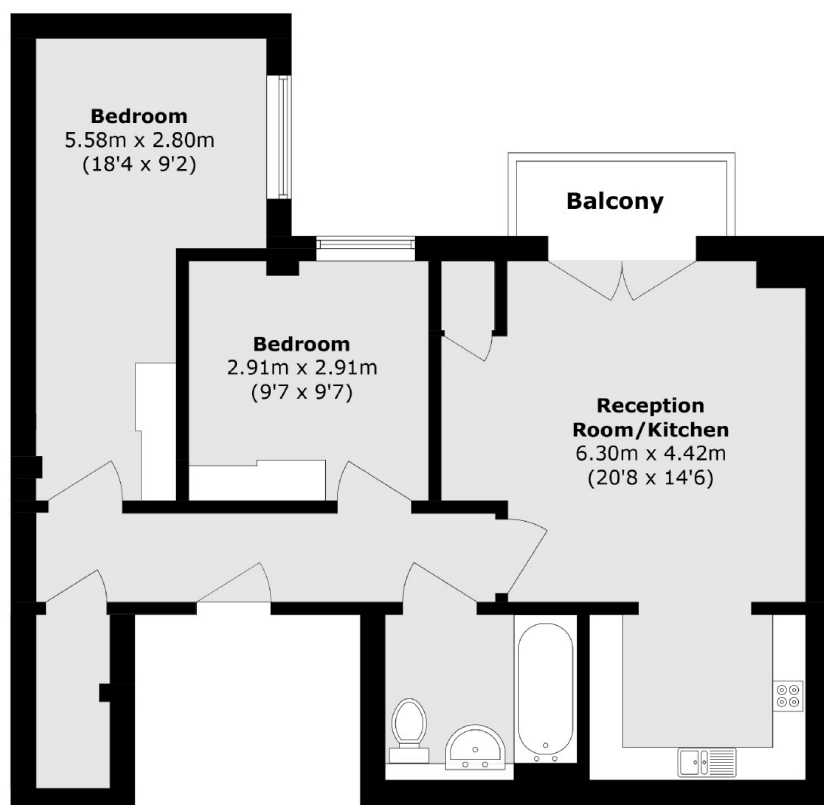
A bright and modern third-floor apartment, ideally located just a 5-minute walk from Peckham Rye Station offering fast links to London Bridge in under 20 minutes. This well-presented home features two spacious double bedrooms, a sleek open-plan kitchen with integrated appliances, and a generous living area that opens onto a private balcony perfect for relaxing or entertaining. The bathroom is finished to a high standard. Given its proximity to the station and high street it is a very quiet development set off of the main road. The building also has lift access and comes with a long lease.

Located in the heart of vibrant Peckham, you're surrounded by independent cafés, bars, parks, and cultural hotspots. Peckham Rye Park is nearby, and the area is known for its strong community vibe and excellent transport connections.

Features

- Third Floor Apartment
- Excellent Location
- Private Balcony
- Two Double Bedrooms
- Long Lease
- Open Plan Living

Bournemouth Road, London, SE15



Total area (approx.): 59.2 sq. m (637.2 sq. ft)

Balcony area (approx.): 2.3 sq. m (24.7 sq. ft)