



Selden Road, SE15

£675,000

Tucked away on a quiet residential street in Nunhead SE15, this well proportioned three bedroom terraced house offers 916 sq ft of freehold living space, blending functionality with the charm of a mature front garden.

Enviably located just a short walk from Nunhead and Queens Road stations along with the green spaces of Telegraph Hill, Nunhead Cemetery and Peckham Rye. The area's wide range of restaurants, bars and community events are on your doorstep.

Features

- Freehold House
- Three Bedrooms
- Mature Front Garden
- Excellent Location
- Great Condition
- 916 Square Foot



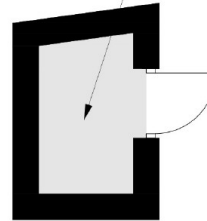
Selden Road, SE15

Set behind a beautifully mature private front garden, the home invites you in with a sense of privacy. Inside, you'll find a modernised kitchen with sleek finishes, ample worktop space, and room for a dining area. A unique feature of the home is the sociable service hatch through to the spacious reception room, allowing for easy hosting and a more connected living experience. The bright and airy reception room spans the width of the property and offers a versatile space for relaxing or entertaining. Completing the ground floor is a handy downstairs W.C. Upstairs, the property boasts three well proportioned bedrooms, two of which benefit from built-in storage. These are all serviced by a family sized bathroom, ideal for growing families or sharers.

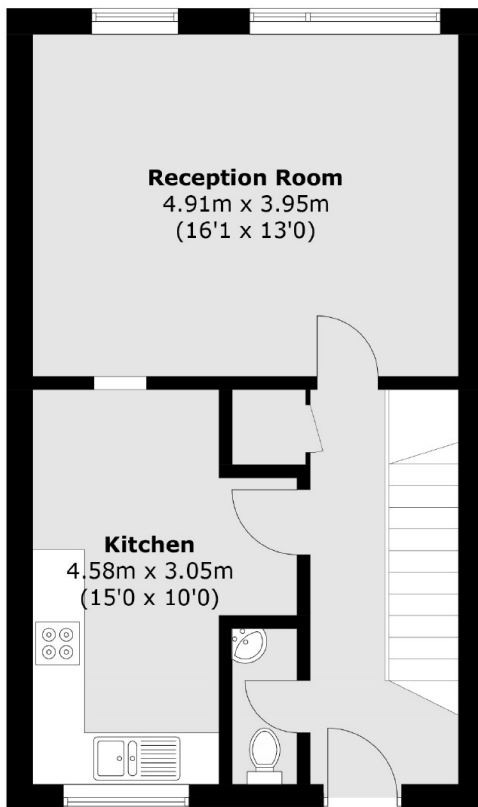


Selden Road, London, SE15

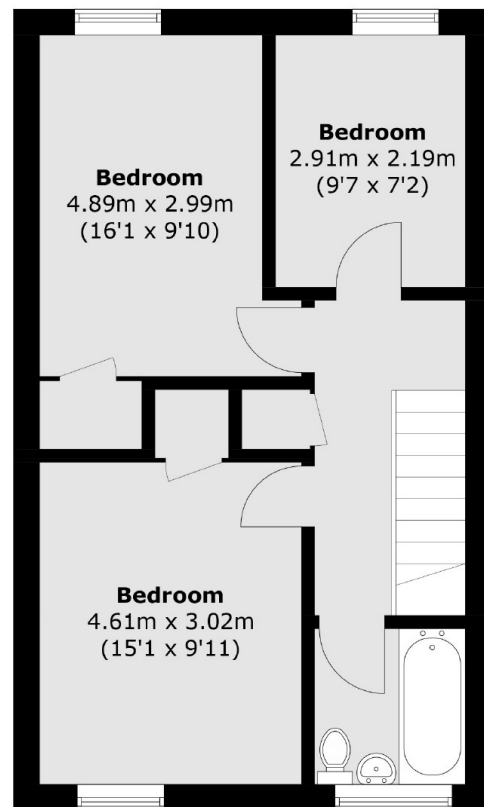
Outdoor Storage
1.86m x 1.09m
(6'1" x 3'7")



**(Not Shown In Actual
Location / Orientation)**



Ground Floor



First Floor

Total area (approx.): 85.1 sq. m (916.0 sq. ft)
Outdoor Storage: 2.1 sq. m (22.6 sq. ft)