



Domett Close, SE5

£425,000

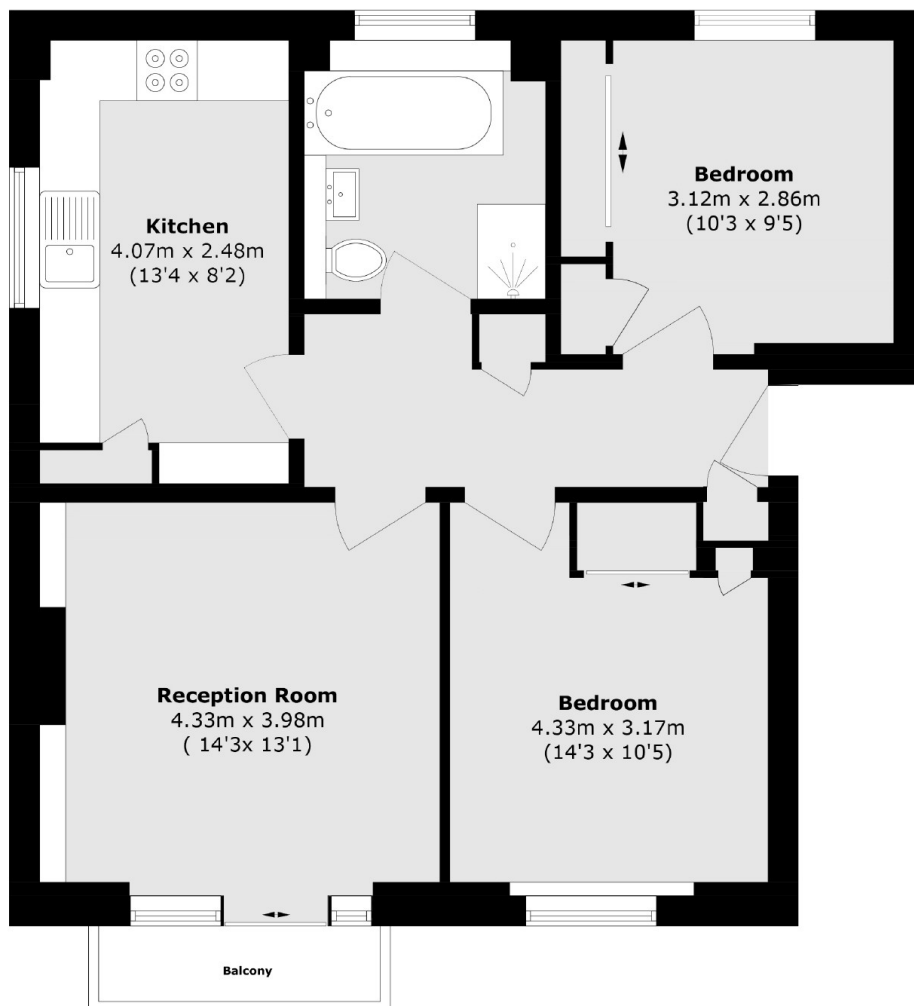
A top floor two double bedroom flat offering 703 square feet of living space with a private south east facing balcony. This flat has been renovated throughout to a modern and stylish finish meaning it is a fantastic turn key purchase for it's next owner.

Perfectly positioned for both Denmark Hill and East Dulwich Stations with regular trains through to London Bridge. Local bus routes provide connections to the surrounding areas and central London. A number of excellent schools are nearby as well as an abundance of green spaces such as Ruskin Park and Green Dale Fields.

Features

- Two Double Bedrooms
- Private Balcony
- 703 Square Foot
- Excellent Condition
- Ready To Move In
- Great Location

Domett Close, London, SE5



Total area (approx.): 65.4 sq. m (703.9 sq. ft)

Balcony area (approx.): 2.1 sq. m (22.6 sq. ft)

Dexters

Peckham Rye
2 Barry Parade
Barry Road
London

Sales
020 8742 4146

Energy Rating: D. We aim to make our particulars both accurate and reliable. However they are not guaranteed; nor do they form part of an offer or contract. If you require clarification on any points then please contact us, especially if you're traveling some distance to view. Please note that appliances and heating systems have not been tested and therefore no warranties can be given as to their good working order.

 **RICS** | Regulated
Estate Agent
and Letting Agent

[dexters.co.uk](https://www.dexters.co.uk)