



**Holbeck Row, SE15**

**£1,100,000**

**Dexters**



## Holbeck Row, SE15

Set on the picturesque and sought-after Holbeck Row, this stunning five bedroom double fronted Victorian house effortlessly blends period charm with contemporary design, offering an impressive 1,880 square feet of beautifully crafted living space.

Finished to the highest specification throughout, this exquisite home has been meticulously renovated by the current owners. The ground floor delivers a truly spectacular open-plan kitchen and dining space. The heart of the home is the magnificent bespoke kitchen, complete with a statement island, top-of-the-line appliances, and expansive bifold doors that open onto a landscaped, south-facing garden. The double reception room has been opened up to provide a generous living area, enhanced by a beautiful character bay window and classic solid wood flooring. Upstairs, the principal bedroom suite offers a luxurious retreat, complete with an incredible walk-in wardrobe. Two further double bedrooms on this level are served by a modern family bathroom. The loft has been expertly extended, adding two additional double bedrooms and a stylish second bathroom ideal for guests, a growing family, or home working.

Holbeck Row is a quiet residential cul-de-sac perfectly located for the open spaces of Burgess Park and Peckham Rye Park. Queen's Road Peckham is the nearest station providing Overground services to Shoreditch High Street and Clapham Junction with frequent bus routes into Central London.

### Features

- Five Double Bedrooms
- Double Fronted Victorian House
- South Facing Garden
- Pristine Condition
- 1880 Square Foot
- Excellent Location







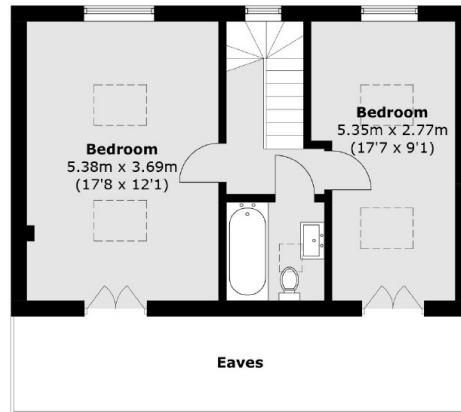




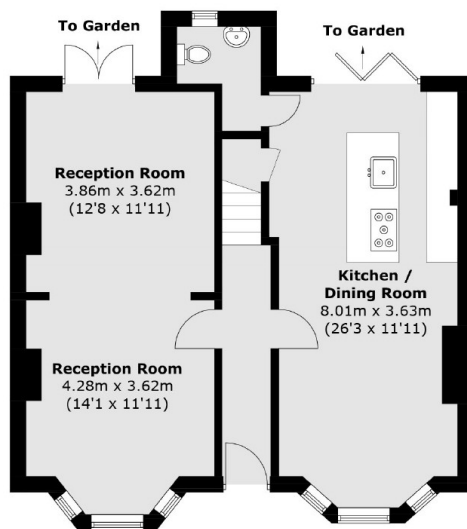




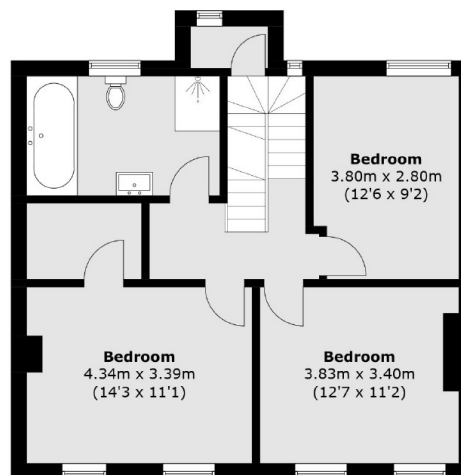
# Holbeck Row, London, SE15



**Second Floor**



**Ground Floor**



**First Floor**

Total area (approx.): 174.7 sq. m (1,880.4 sq. ft)  
(Excluding Eaves)